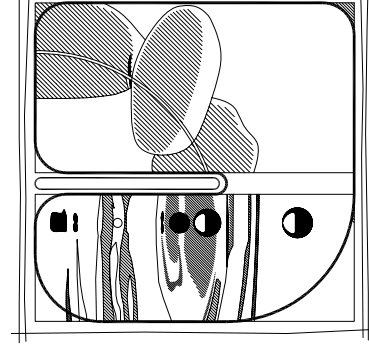


**Notes:**

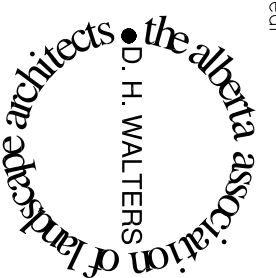
- Do not scale drawing
- It is the responsibility of the appropriate Contractor to check omission of the appropriate Contractor to check omission to the Architect or Engineer
- It is the responsibility of the appropriate Contractor to comply with all Codes and Regulations applicable to the performance of their work
- All Drawings and Specifications are instruments of service and the Copyright of ACT ARCHITECTURE INC. or the Consultant, be used or reproduced in whole or in part without the express written consent of the Architect or Engineer.
- All dimensions are in mm unless noted otherwise.



**Douglas Walters Landscape Architect Ltd.**  
 1723 - 103 Avenue  
 Edmonton, AB  
 Canada, T5N 1N8  
 phone: 1-780-955-5008  
 fax: 1-780-955-5008  
 e-mail: dmla@actinc.com

**Issues/Revisions**

No.	Description	Date	By
1.	ISSUED FOR DEVELOPMENT PERMIT	FEB. 08 '08	DW/A
2.	REVISED FOR DEVELOPMENT PERMIT	JUNE '08	DW/A



Client  
**ALBERTA  
 INFRASTRUCTURE  
 & TRANSPORTATION**

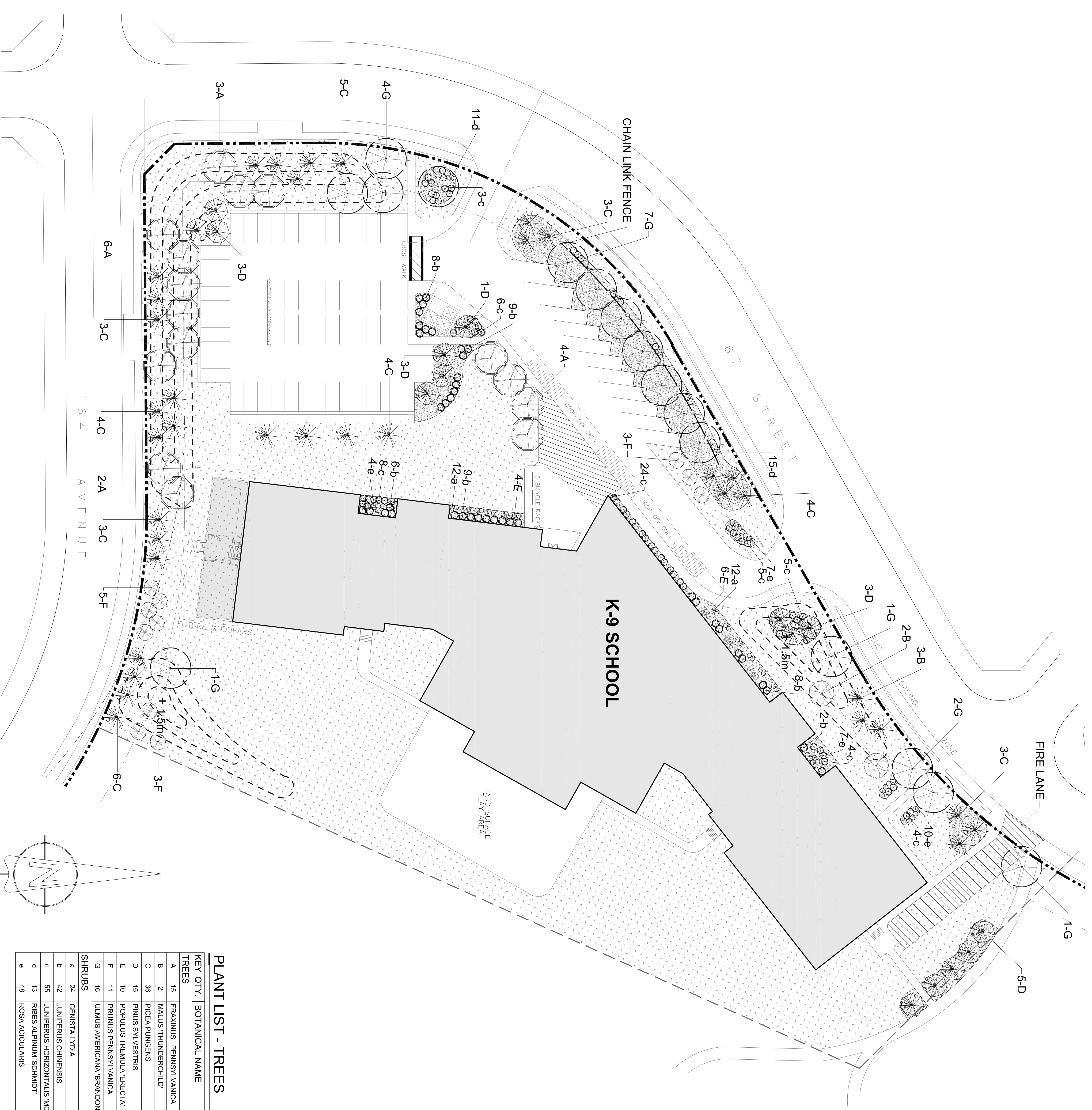
Project  
**K-9 BELLE RIVE  
 LAKE DISTRICT PUBLIC  
 ELEMENTARY JUNIOR  
 HIGH SCHOOL**

Scale	1:400	Designed By	DW
Project No.	054.83707	Drawn By	JS
Date	2008 JUNE	Checked By	DW

Drawing Title  
**LANDSCAPE  
 DEVELOPMENT PLAN**

Drawing No.

**L-01**



**LEGEND**

- PROPERTY LINE
- CULTIVATED EDGE
- BERM
- 75mm DEPTH FIREHAWK WOOD MULCH OVER PRE-EMERGENT HERBICIDE TREATMENT. TREAT AS PER MANUFACTURERS RECOMMENDATIONS
- SOD OVER 150mm TOPSOIL

**BICYCLE PARKING CALCULATIONS**

CLASSROOMS	CALCULATION	REQUIRED	PROVIDED
24	24 x 1.4 = 33.6	34	56

NOTE: CALCULATIONS BASED ON 1.4 PARKING SPACES PER CLASSROOM  
 THIS CALCULATION INCLUDES THE PARKING REQUIREMENTS FOR FUTURE SCHOOL DEVELOPMENT ON SITE

**LANDSCAPE CALCULATIONS**

SETBACKS	DIMENSIONS	AREA	TREES	SHRUBS
NORTH PROPERTY LINE	7.5 m x 243.8 m	1828.5 m <sup>2</sup>	73.1	121.9
EAST PROPERTY LINE	0.0 m x 0.0 m	0.0 m <sup>2</sup>	0.0	0.0
SOUTH PROPERTY LINE	7.5 m x 110.7 m	830.3 m <sup>2</sup>	33.2	55.4
WEST PROPERTY LINE	0.0 m x 0.0 m	0.0 m <sup>2</sup>	0.0	0.0
CORNER PROPERTY LINE	7.5 m x 8.4 m	63.0 m <sup>2</sup>	2.5	4.2
PARKING	67 STALLS x 2	134	7	13
REQUIRED			115.6	194.9
EXISTING			0	0
PROVIDED	116 TREES (58 CON. / 58 DEC.)		116	195
<b>TOTAL</b>			<b>116</b>	<b>195</b>

NOTE: ALL CALCULATIONS BASED ON 1 TREE PER 25m<sup>2</sup> OF LANDSCAPED AREA & 1 SHRUB PER 15m<sup>2</sup> OF LANDSCAPED AREA. PARKING CALCULATIONS ARE BASED ON 1 TREE PER 20m<sup>2</sup> OF LANDSCAPED AREA & 1 SHRUB PER 10m<sup>2</sup> OF LANDSCAPED AREA

**PLANT LIST - TREES**

KEY QTY.	BOTANICAL NAME	COMMON NAME	SIZE	SPACE	COND.
<b>TREES</b>					
A	15	FRAXINUS PENNSYLVANICA	50mm CAL.	5.5m O.C.	B&B
B	2	THUNDERCHILD FLOWERING CRAB	75mm CAL.	5.5m O.C.	B&B
C	36	PICEA PLUNGENS	2500mm HT.	4.0m O.C.	B&B
D	15	PINUS SYLVESTRIS	3500mm HT.	4.0m O.C.	B&B
E	10	POPULUS TREMULA 'ERECTA'	50mm CAL.	3.0m O.C.	B&B
F	11	PRUNUS PENNSYLVANICA	75mm CAL.	3.0m O.C.	B&B
G	16	ULMUS AMERICANA 'BRANDON'	75mm CAL.	6.5m O.C.	B&B
<b>SHRUBS</b>					
a	24	GENISTALYXA	600mm HT.	0.8m O.C.	CONT.
b	42	JUNIPERUS CHINENSIS	600mm SP.	1.5m O.C.	CONT.
c	55	JUNIPERUS HORIZONTALIS 'MOTHER LOOE'	600mm SP.	1.2m O.C.	CONT.
d	13	RIBES ALPINA 'SCHMIDT'	600mm HT.	1.0m O.C.	CONT.
e	48	ROSA ACICULARIS	600mm HT.	0.8m O.C.	CONT.