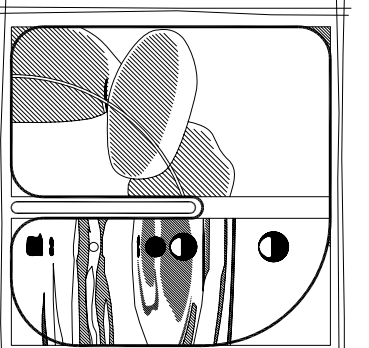


Notes:

- Do not scale drawing
- It is the responsibility of the appropriate Contractor to check and verify all dimensions on site and report all errors and/or omissions to the Architect or Engineer
- It is the responsibility of the appropriate Contractor to comply with all applicable laws, codes, and regulations applicable to the performance of their work
- All Drawings and Specifications are instruments of service and are the property of the Architect or Engineer. This Drawing is loaned to the Contractor for use on this project and may not be used or reproduced in whole or in part without the express written consent of the Architect or Engineer.
- All dimensions are in mm unless noted otherwise.



Douglas Walters Architects Ltd.  
Edmonton - Alberta  
phone: 1-780-965-5009  
fax: 1-780-965-5008  
e-mail: dmw@calstel.com

Issue/Revisions	No.	Description	Date	By
	1	ISSUED FOR DEVELOPMENT PERMIT	FEB. 08 '08	DMA
	2	REVISED FOR DEVELOPMENT PERMIT	JUNE '08	DMA

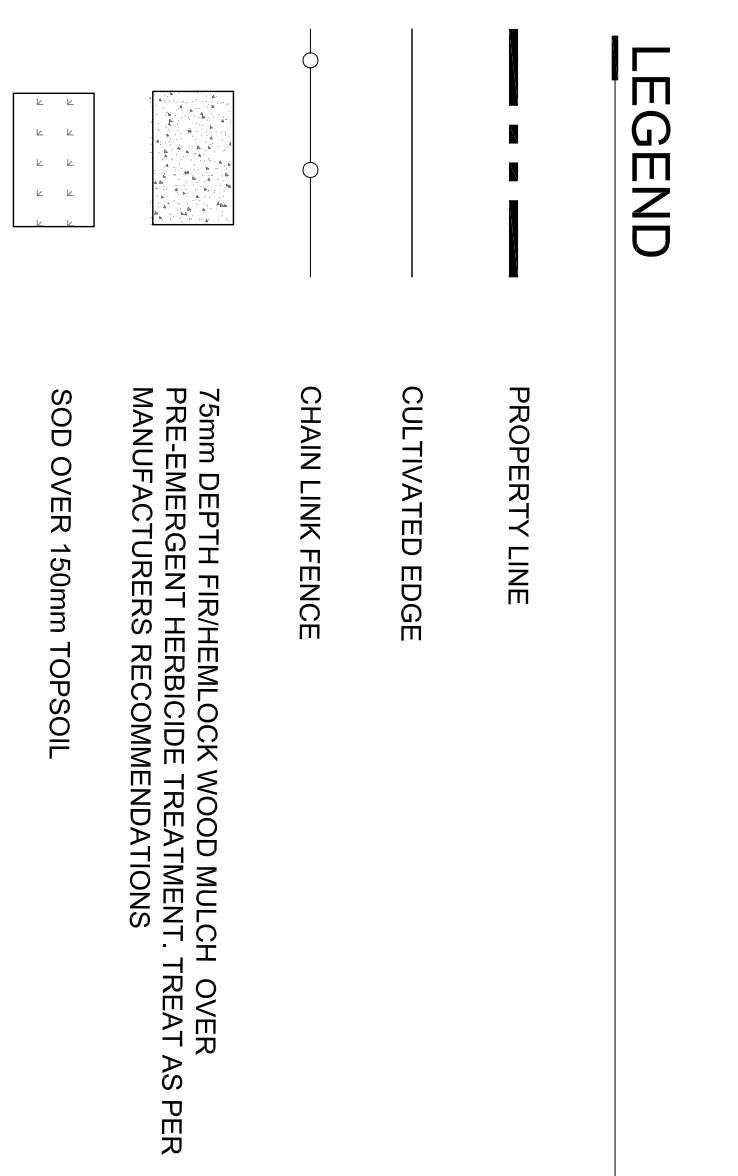
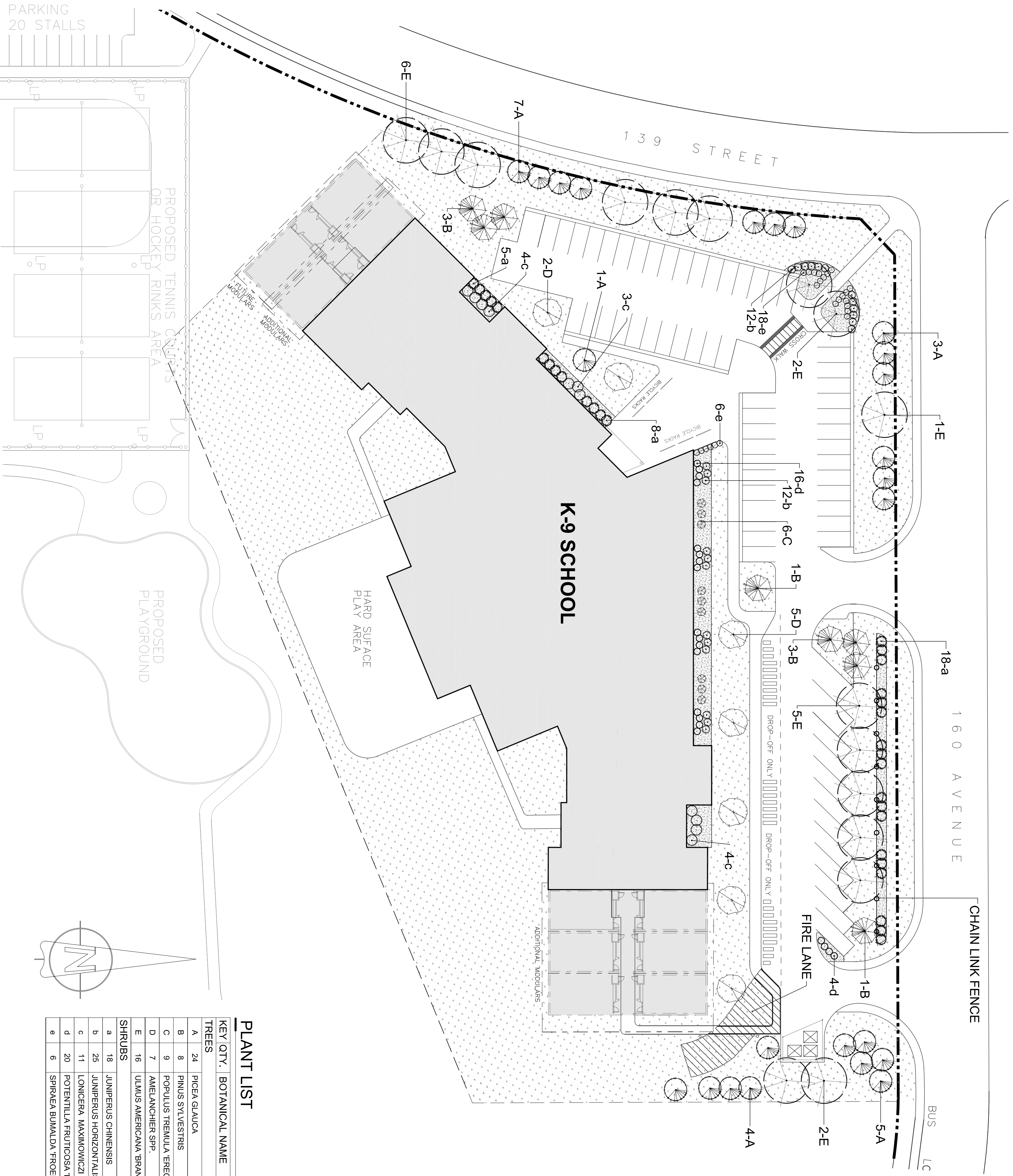


Client  
**ALBERTA  
INFRASTRUCTURE  
& TRANSPORTATION**

Project  
**K-9 CARLTON PUBLIC  
ELEMENTARY JUNIOR  
HIGH SCHOOL**

Scale	1:400	Designed By	DW
Project No.	054-83707	Drawn By	JS
Date	2008 JUNE	Checked By	DW

Drawing No. **L-02**  
LANDSCAPE DEVELOPMENT PLAN



### LANDSCAPE CALCULATIONS

SETBACKS	DIMENSIONS	AREA	TREES	SHRUBS
NORTH PROPERTY LINE	6.0 m x 148.8 m	892.8 m <sup>2</sup>	35.7	59.5
EAST PROPERTY LINE	0.0 m x 0.0 m	0.0 m <sup>2</sup>	0.0	0.0
SOUTH PROPERTY LINE	0.0 m x 0.0 m	0.0 m <sup>2</sup>	0.0	0.0
WEST PROPERTY LINE	6.0 m x 84.2 m	505.2 m <sup>2</sup>	20.2	33.7
CORNER PROPERTY LINE	6.0 m x 8.7 m	52.2 m <sup>2</sup>	2.1	3.5
PARKING	66 STALLS x 2	132	7	13
REQUIRED			64.6	109.9
EXISTING			0	0
PROVIDED			65	110
<b>TOTAL</b>			<b>65</b>	<b>110</b>

NOTE: ALL CALCULATIONS BASED ON 1 TREE PER 25m<sup>2</sup> OF LANDSCAPED AREA & 1 SHRUB PER 15m<sup>2</sup> OF LANDSCAPED AREA. \*PARKING CALCULATIONS ARE BASED ON 1 TREE PER 20m<sup>2</sup> OF LANDSCAPED AREA & 1 SHRUB PER 10m<sup>2</sup> OF LANDSCAPED AREA

### BICYCLE PARKING CALCULATIONS

CLASSROOMS	CALCULATION	REQUIRED	PROVIDED
24	24 x 1.4 = 33.6	34	56

NOTE: CALCULATIONS BASED ON 1.4 PARKING SPACES PER CLASSROOM  
THIS CALCULATION INCLUDES THE PARKING REQUIREMENTS FOR FUTURE SCHOOL DEVELOPMENT ON SITE

### PLANT LIST

KEY QTY.	BOTANICAL NAME	COMMON NAME	SIZE	SPACE	COND.
<b>TREES</b>					
A	24	PICEA GLAUCA	WHITE SPRUCE	2500mm HT. 3.5m O.C.	B&B
B	8	PNUS SYLVESTRIS	SCOTS PINE	2500mm HT. 4.0m O.C.	B&B
C	9	POPULUS TREMULA ERECTA	SWEDISH COLUMNAR ASPEN	50mm CAL. 3.0m O.C.	B&B
D	7	AMELANCHIER SPP.	SERVICEBERRY	50mm CAL. AS SHOWN	B&B
E	16	ULMUS AMERICANA BRANCONI*	BRANDON ELM	75mm CAL. AS SHOWN	B&B
<b>SHRUBS</b>					
a	18	JUNIPERUS CHINENSIS	GOLD COAST JUNIPER	600mm SP. 1.5m O.C.	CONT.
b	25	JUNIPERUS HORIZONTALIS PRINCE OF WALES	PRINCE OF WALES JUNIPER	1.2m O.C.	CONT.
c	11	LONICERA MAAXIMOWICZI SACHALINENSIS	SAKHALIN HONEYSUCKLE	600mm SP. 1.5m O.C.	CONT.
d	20	POTENTIALIA FRUTICOSA KATHERINE DYKES	KATHERINE DYKES POTENTIALIA	600mm HT. 0.8m O.C.	CONT.
e	6	SPRAEVA BUNAUADA FROEBELI*	FROEBELI SPRAEA	600mm HT. 0.8m O.C.	CONT.