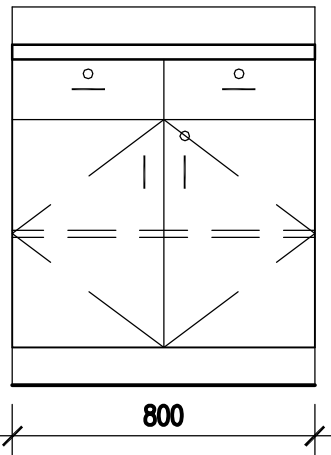


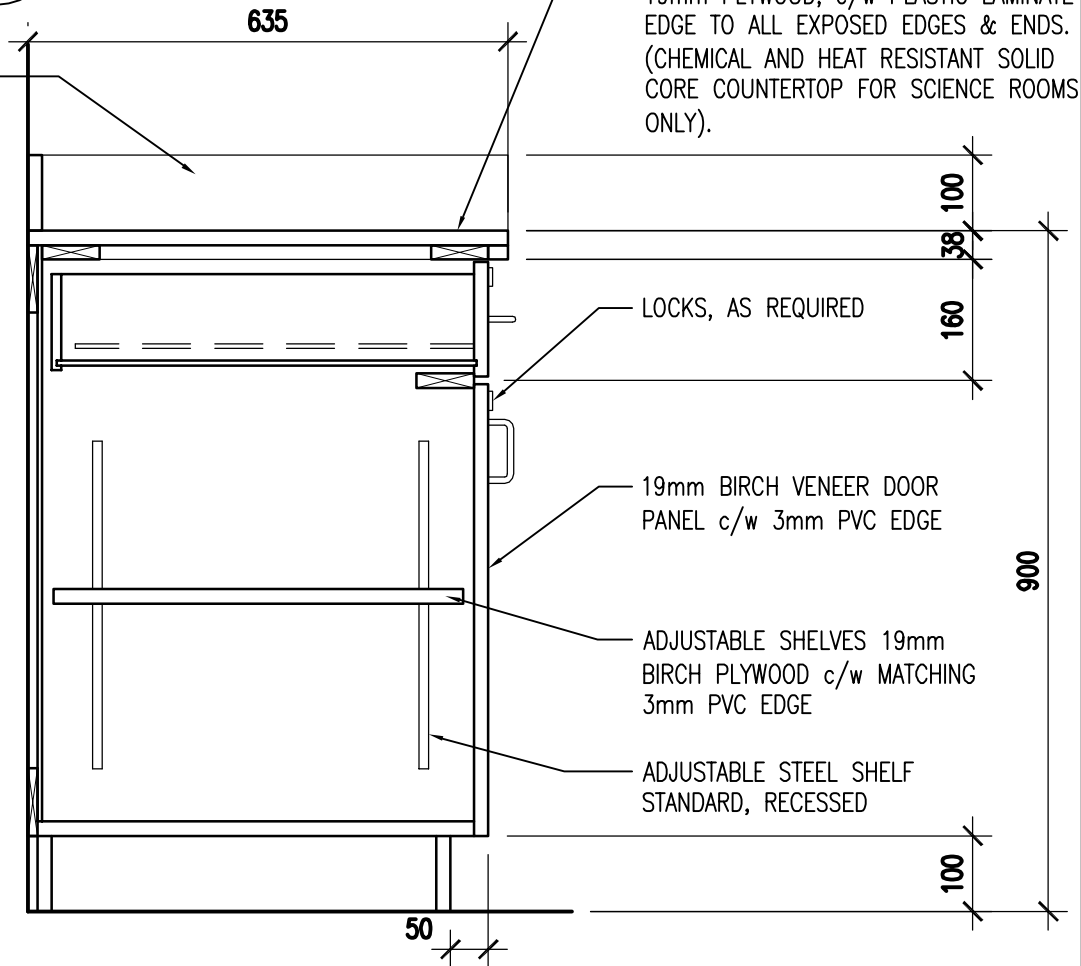
Schedule 18 (Technical Requirements)-DBFM Agreement

APPENDIX D – MILLWORK SKETCHES



1
MW-1
ELEVATION
1:20

RETURN PLASTIC LAMINATE CLAD SPLASHBACK AT END WALLS



COUNTERTOP - PLASTIC LAMINATE ON 19mm PLYWOOD, c/w PLASTIC LAMINATE EDGE TO ALL EXPOSED EDGES & ENDS. (CHEMICAL AND HEAT RESISTANT SOLID CORE COUNTERTOP FOR SCIENCE ROOMS ONLY).

LOCKS, AS REQUIRED

19mm BIRCH VENEER DOOR PANEL c/w 3mm PVC EDGE

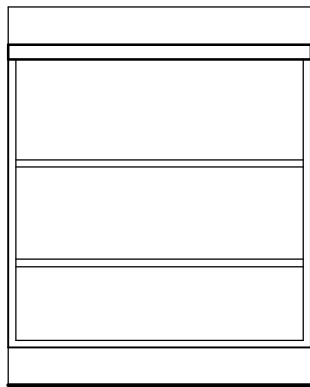
ADJUSTABLE SHELVES 19mm BIRCH PLYWOOD c/w MATCHING 3mm PVC EDGE

ADJUSTABLE STEEL SHELF STANDARD, RECESSED

2
MW-1
SECTION
1:10

This drawing plotted

PROJECT	ALBERTA SCHOOLS ALTERNATIVE PROCUREMENT (ASAP II) ALBERTA INFRASTRUCTURE	MW-1
SHEET TITLE	BASE CABINET - DOOR/DRAWER UNIT ELEVATION AND SECTION	
PROJECT NUMBER 28344	SCALE AS NOTED	DATE JUNE 18 2009
		BARR RYDER ARCHITECTS & PLANNERS 210, 10190 - 104 St. Edmonton, Alberta Canada T5J 1A7 Tel: (403) 423-8606 Fax: (403) 429-3962



800

1 ELEVATION
MW-2 1:20

RETURN PLASTIC LAMINATE CLAD SPLASHBACK AT END WALLS

635

COUNTERTOP - PLASTIC LAMINATE ON 19mm PLYWOOD, c/w PLASTIC LAMINATE EDGE TO ALL EXPOSED EDGES & ENDS.

100
38

ADJUSTABLE SHELVES 19mm BIRCH PLYWOOD c/w MATCHING 3mm PVC EDGE

900

ADJUSTABLE STEEL SHELF STANDARD, RECESSED

100

50

2 SECTION
MW-2 1:10

This drawing plotted

PROJECT ALBERTA SCHOOLS ALTERNATIVE PROCUREMENT (ASAP II)
ALBERTA INFRASTRUCTURE

MW-2

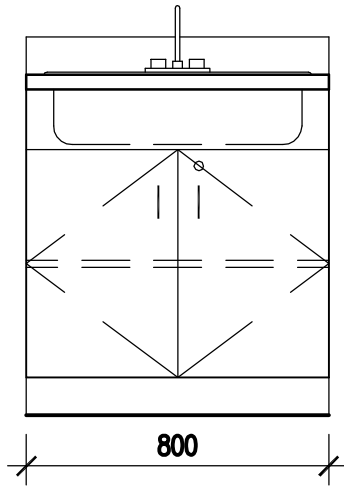
SHEET TITLE BASE CABINET - OPEN W/ SHELVING UNIT
ELEVATION AND SECTION

PROJECT NUMBER
28344

SCALE
AS NOTED

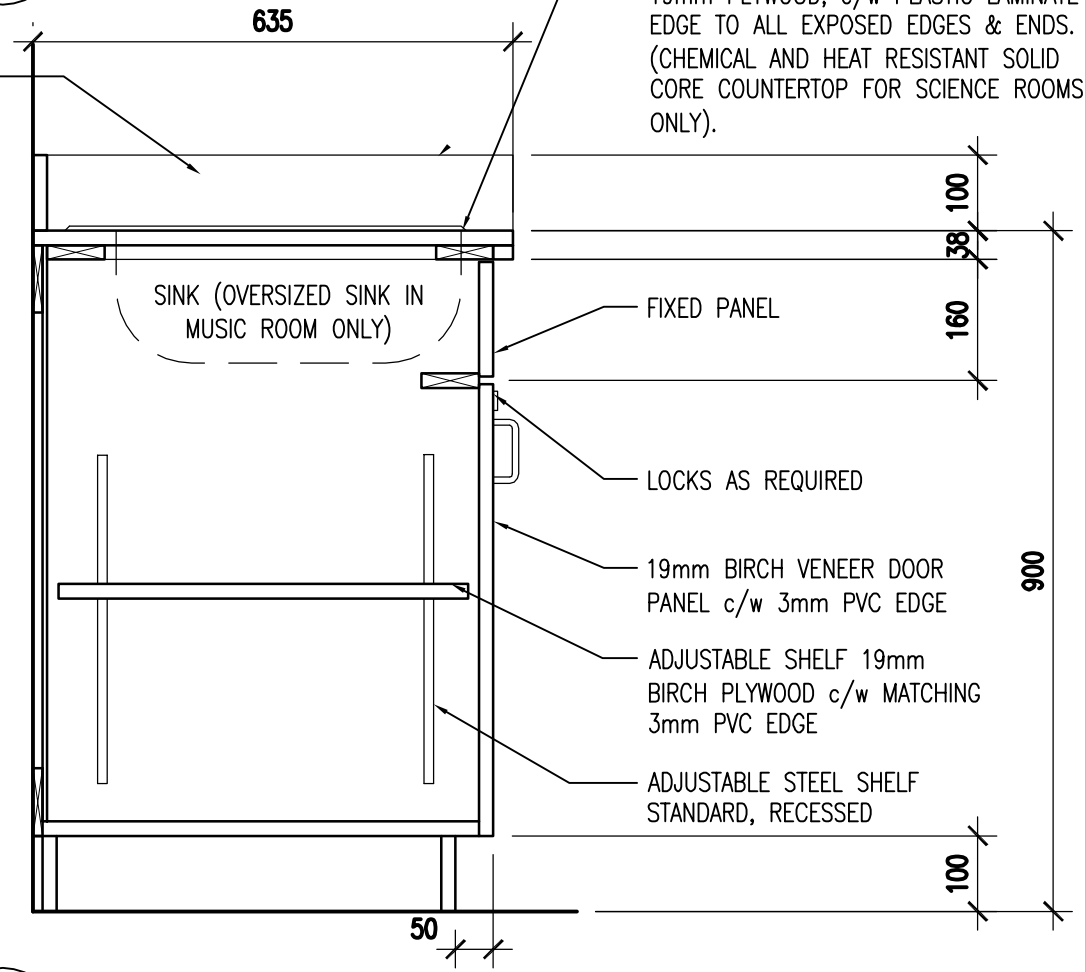
DATE
JUNE 18 2009

BARR RYDER ARCHITECTS & PLANNERS
210, 10190 - 104 St.
Edmonton, Alberta
Canada T5J 1A7
Tel: (403) 423-6606
Fax: (403) 429-3962



1
MW-3
ELEVATION
1:20

RETURN PLASTIC LAMINATE CLAD SPLASHBACK AT END WALLS



COUNTERTOP - PLASTIC LAMINATE ON 19mm PLYWOOD, c/w PLASTIC LAMINATE EDGE TO ALL EXPOSED EDGES & ENDS. (CHEMICAL AND HEAT RESISTANT SOLID CORE COUNTERTOP FOR SCIENCE ROOMS ONLY).

SINK (OVERSIZED SINK IN MUSIC ROOM ONLY)

FIXED PANEL

LOCKS AS REQUIRED

19mm BIRCH VENEER DOOR PANEL c/w 3mm PVC EDGE

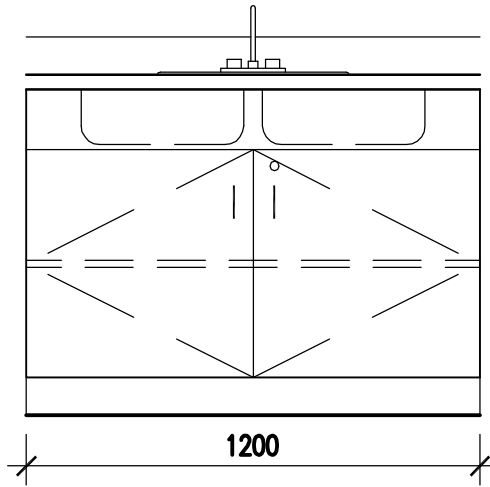
ADJUSTABLE SHELF 19mm BIRCH PLYWOOD c/w MATCHING 3mm PVC EDGE

ADJUSTABLE STEEL SHELF STANDARD, RECESSED

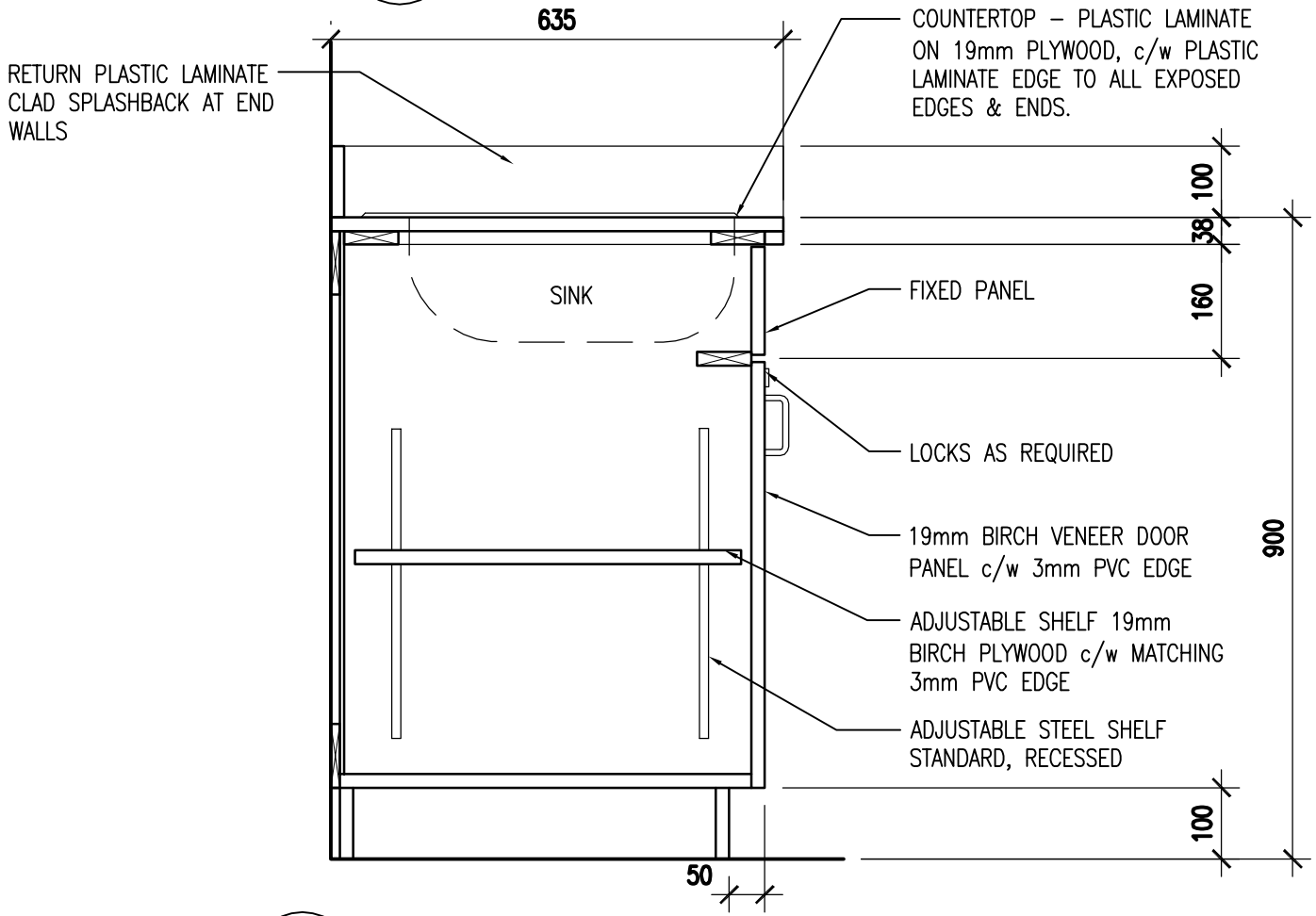
2
MW-3
SECTION
1:10

This drawing plotted

PROJECT	ALBERTA SCHOOLS ALTERNATIVE PROCUREMENT (ASAP II) ALBERTA INFRASTRUCTURE	MW-3
SHEET TITLE	BASE CABINET - SINGLE SINK UNIT ELEVATION AND SECTION	
PROJECT NUMBER 28344	SCALE AS NOTED	DATE JUNE 18 2009
		ARCHITECTS & PLANNERS 210, 10190 - 104 St. Edmonton, Alberta Canada T5J 1A7 Tel: (403) 423-8606 Fax: (403) 429-3962



1
MW-4
ELEVATION
1:20

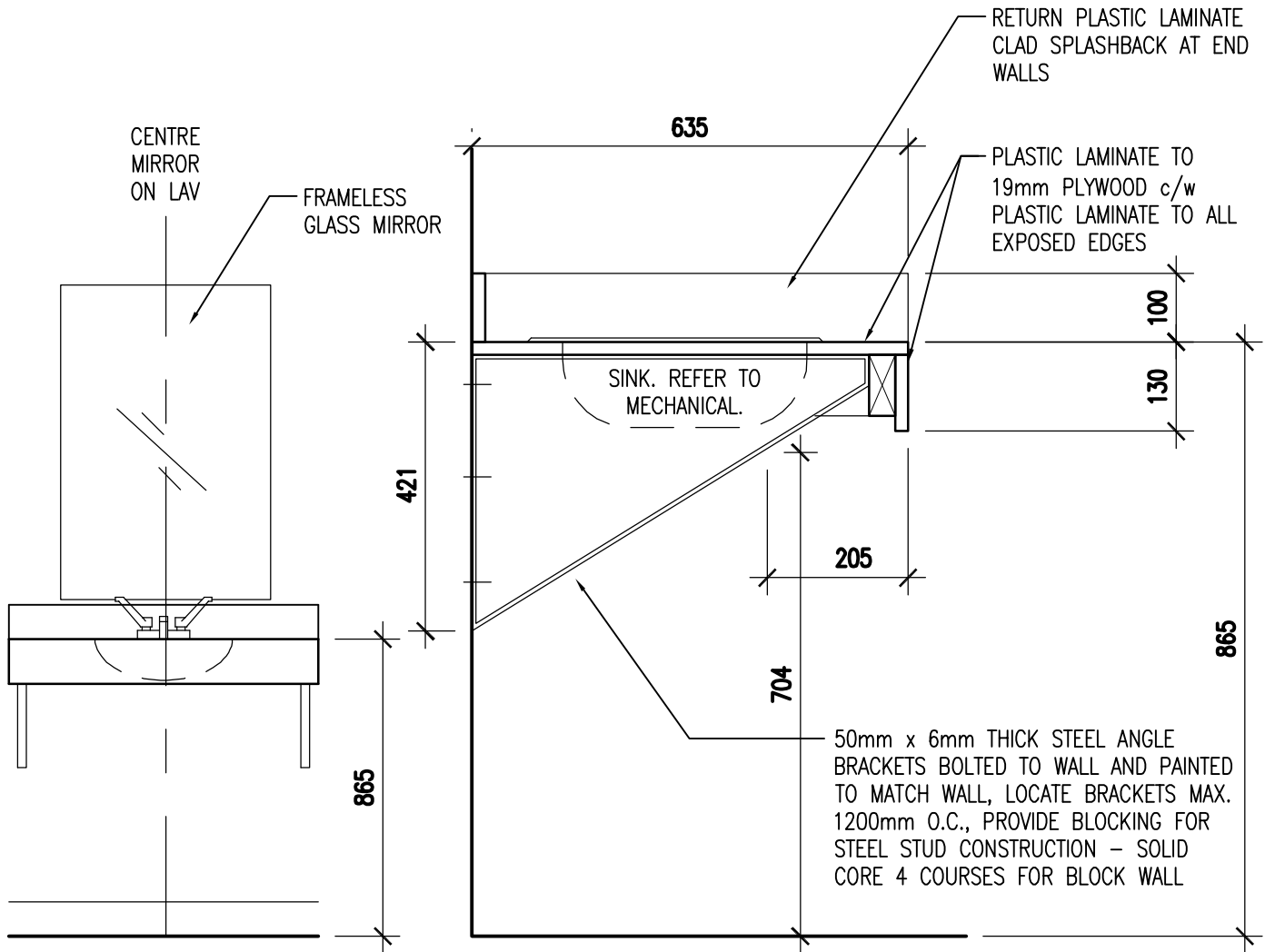


2
MW-4
SECTION
1:10

This drawing plotted

PROJECT	ALBERTA SCHOOLS ALTERNATIVE PROCUREMENT (ASAP II) ALBERTA INFRASTRUCTURE	MW-4
SHEET TITLE	BASE CABINET - DOUBLE SINK UNIT ELEVATION AND SECTION	
PROJECT NUMBER	SCALE	DATE
28344	AS NOTED	JUNE 18 2009

BARR
RYDER
ARCHITECTS
& PLANNERS
210, 10190 - 104 St.
Edmonton, Alberta
Canada T5J 1A7
Tel: (403) 423-8606
Fax: (403) 429-3962

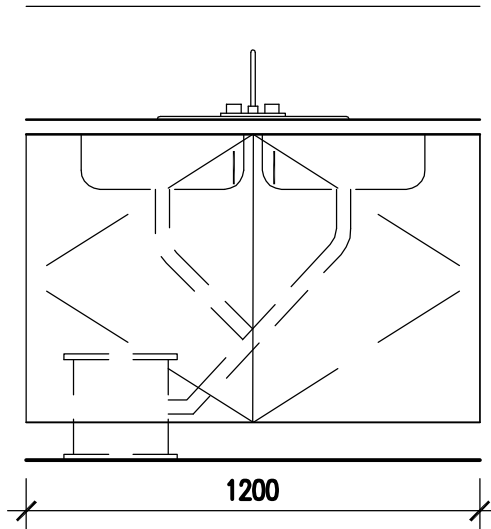


1 SECTION
MW-5 1:10

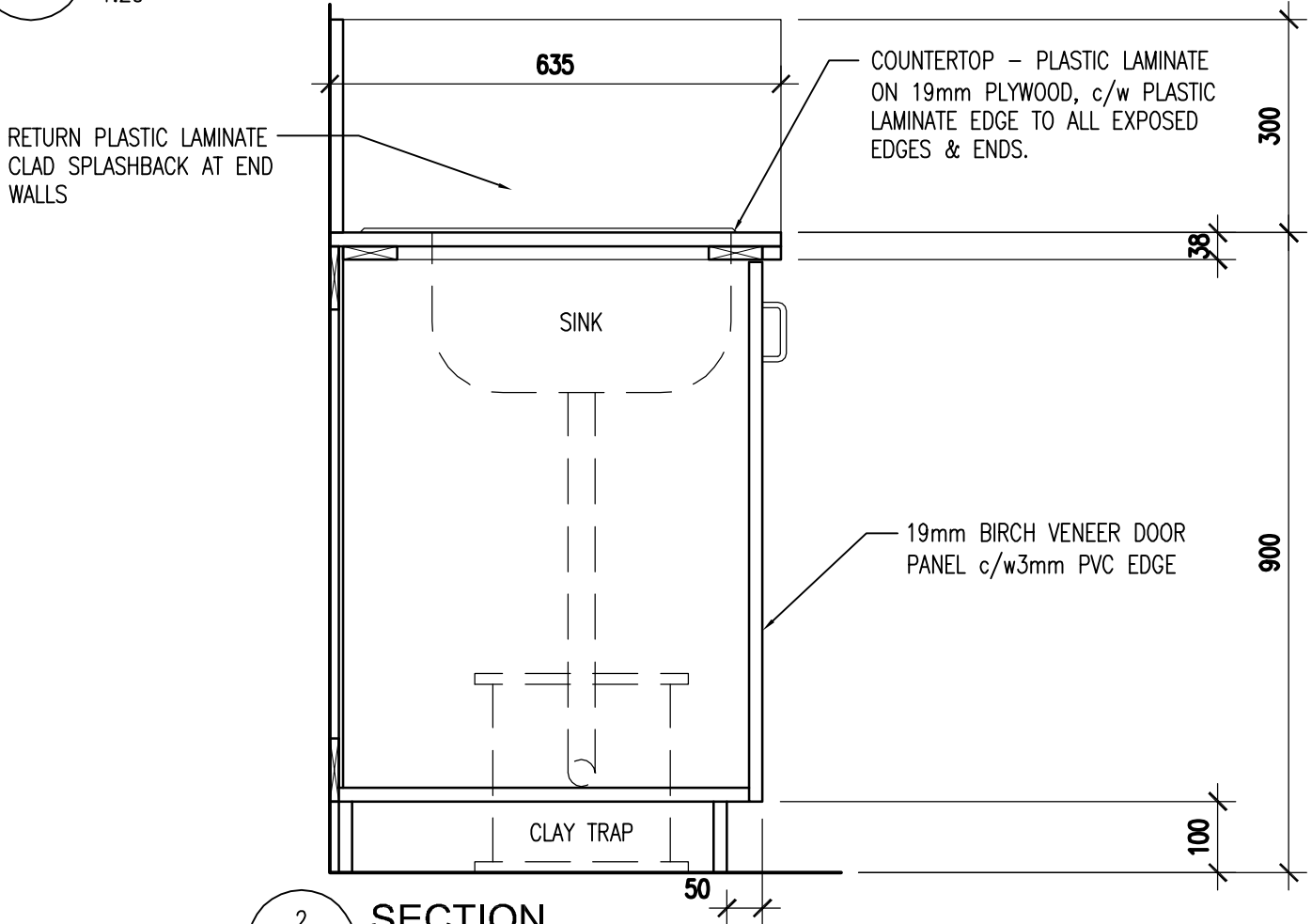
2 SECTION
MW-5 1:10

This drawing plotted

PROJECT	ALBERTA SCHOOLS ALTERNATIVE PROCUREMENT (ASAP II) ALBERTA INFRASTRUCTURE	MW-5
SHEET TITLE	BASE CABINET - WASHROOM VANITY ELEVATION AND SECTION	BARR RYDER ARCHITECTS & PLANNERS 210, 10190 - 104 St. Edmonton, Alberta Canada T5J 1A7 Tel: (403) 423-8606 Fax: (403) 429-3962
PROJECT NUMBER	SCALE	
28344	AS NOTED	JUNE 18 2009



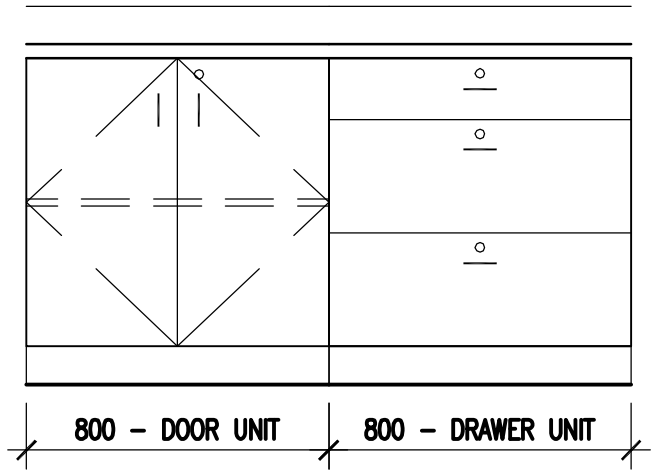
1
MW-6 1:20
ELEVATION



2
MW-6 1:10
SECTION

This drawing plotted

PROJECT	ALBERTA SCHOOLS ALTERNATIVE PROCUREMENT (ASAP II) ALBERTA INFRASTRUCTURE	MW-6
SHEET TITLE	ART ROOM - SINK MILLWORK ELEVATION AND SECTION	
PROJECT NUMBER 28344	SCALE AS NOTED	DATE JUNE 18 2009
		BARR RYDER ARCHITECTS & PLANNERS 210, 10190 - 104 St. Edmonton, Alberta Canada T5J 1A7 Tel: (403) 423-8606 Fax: (403) 429-3962



800 - DOOR UNIT

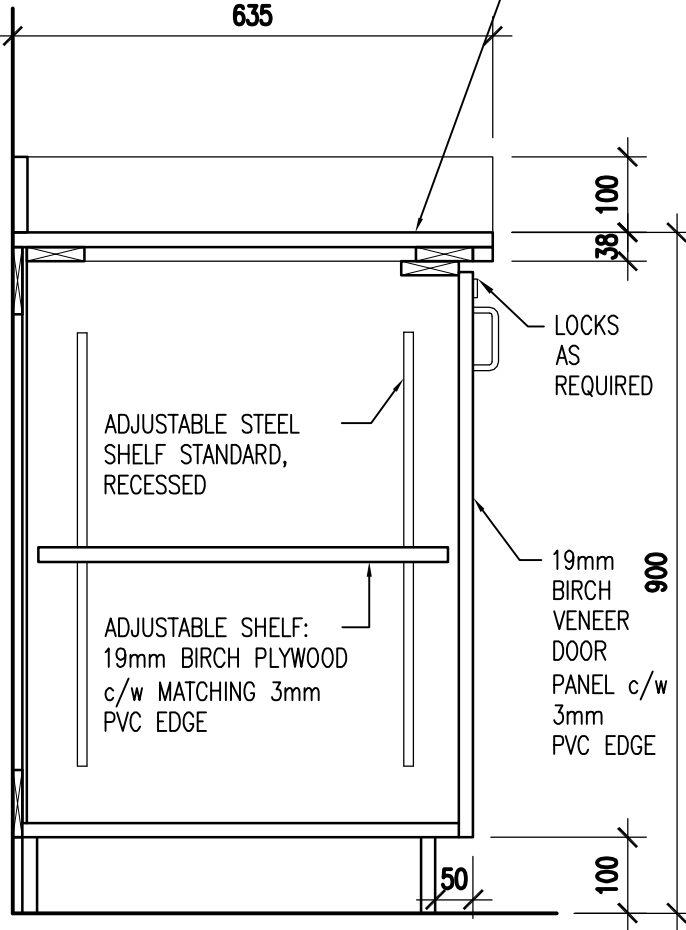
800 - DRAWER UNIT

1
MW-7

ELEVATION

1:20

COUNTERTOP - PLASTIC LAMINATE ON 19mm PLYWOOD, c/w
PLASTIC LAMINATE EDGE TO ALL EXPOSED EDGES & ENDS.



635

635

LOCKS
AS
REQUIRED

ADJUSTABLE STEEL
SHELF STANDARD,
RECESSED

ADJUSTABLE SHELF:
19mm BIRCH PLYWOOD
c/w MATCHING 3mm
PVC EDGE

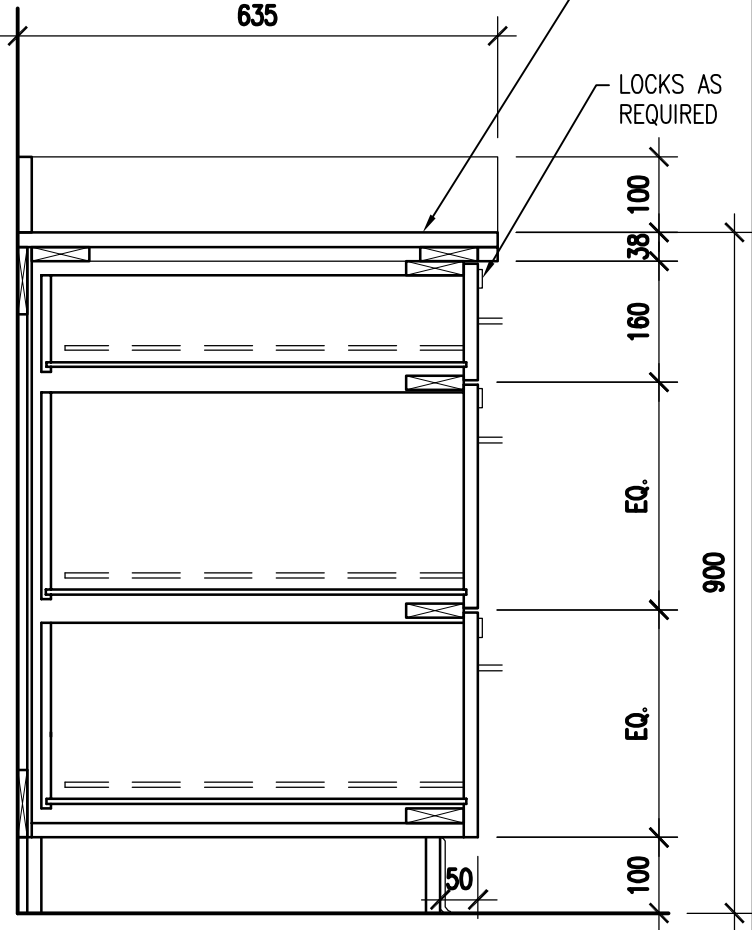
19mm
BIRCH
VENEER
DOOR
PANEL c/w
3mm
PVC EDGE

900

100

50

38 100



LOCKS
AS
REQUIRED

38 100

160

EQ.

EQ.

900

100

2

SECTION - DOOR UNIT

MW-7

1:10

3

SECTION - DRAWER UNIT

MW-7

1:10

This drawing plotted

PROJECT

ALBERTA SCHOOLS ALTERNATIVE PROCUREMENT (ASAP II)
ALBERTA INFRASTRUCTURE

MW-7

SHEET TITLE

FOOD AND FASHION MILLWORK
ELEVATIONS AND SECTIONS

PROJECT NUMBER

28344

SCALE

AS NOTED

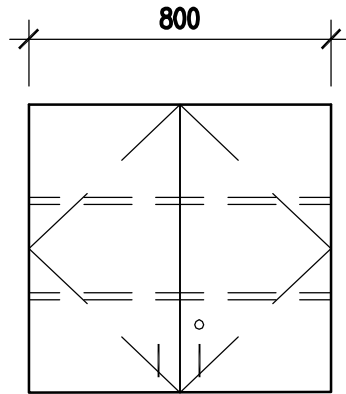
DATE

JUNE 18 2009

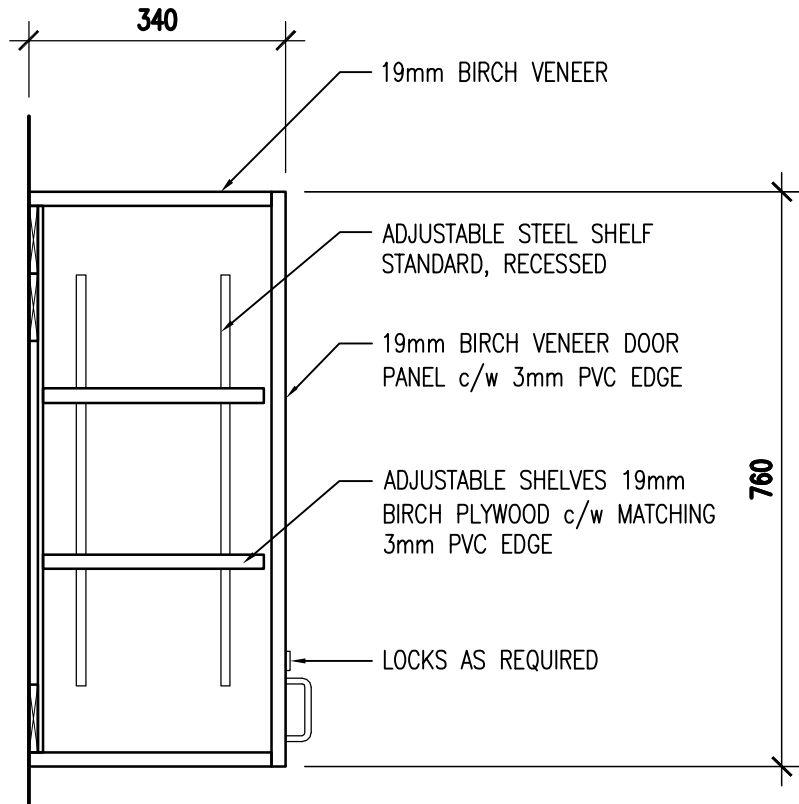
**BARR
RYDER**

ARCHITECTS
& PLANNERS

210, 10190 - 104 St.
Edmonton, Alberta
Canada T5J 1A7
Tel: (403) 423-8606
Fax: (403) 429-3962



1 ELEVATION
MW-8 1:20

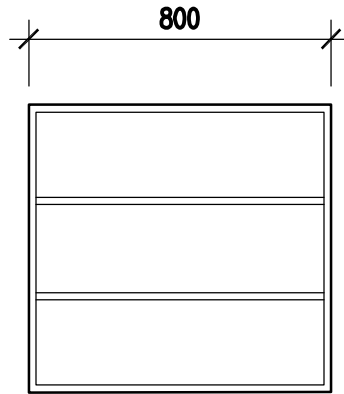


2 SECTION
MW-8 1:10

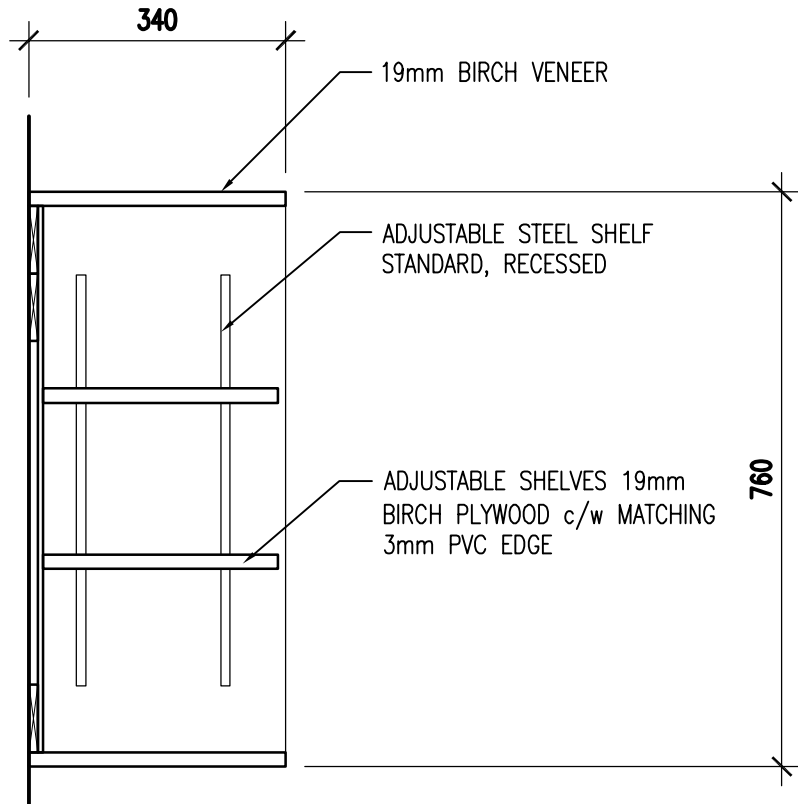
This drawing plotted

PROJECT	ALBERTA SCHOOLS ALTERNATIVE PROCUREMENT (ASAP II) ALBERTA INFRASTRUCTURE	MW-8
SHEET TITLE	UPPER CABINET - DOOR UNIT ELEVATION AND SECTION	
PROJECT NUMBER 28344	SCALE AS NOTED	DATE JUNE 18 2009

BARR RYDER
ARCHITECTS & PLANNERS
 210, 10190 - 104 St.
 Edmonton, Alberta
 Canada T5J 1A7
 Tel: (403) 423-6606
 Fax: (403) 429-3962



1 ELEVATION
MW-9 1:20

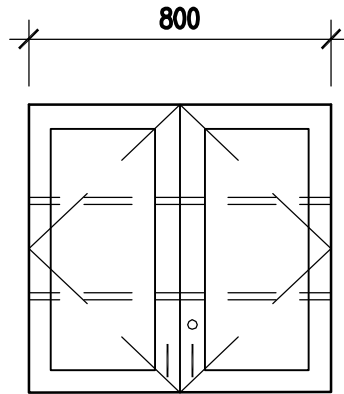


2 SECTION
MW-9 1:10

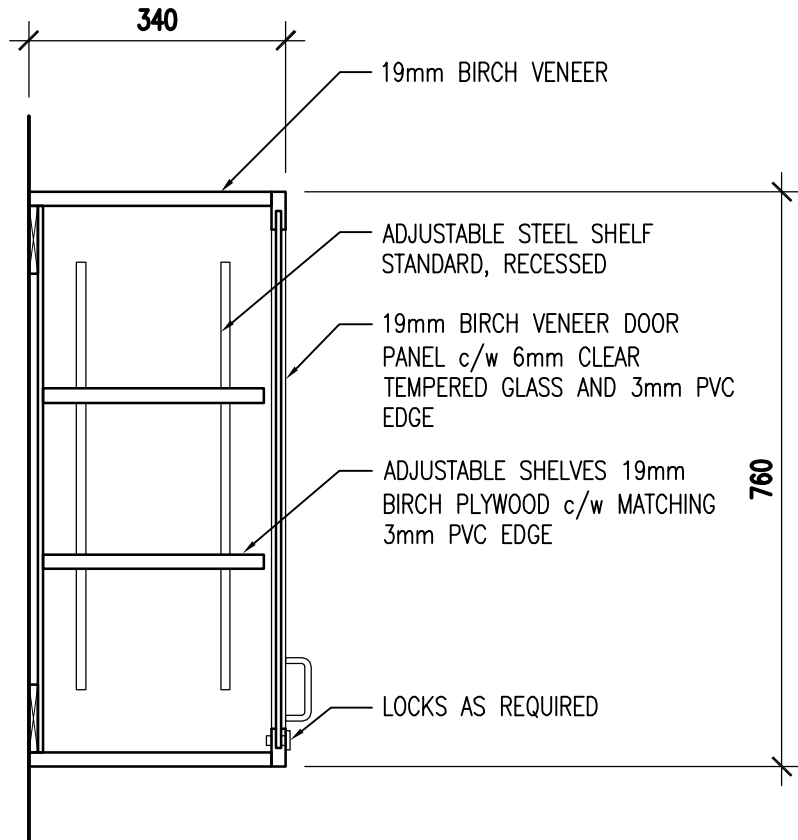
This drawing plotted

PROJECT	ALBERTA SCHOOLS ALTERNATIVE PROCUREMENT (ASAP II) ALBERTA INFRASTRUCTURE	MW-9
SHEET TITLE	UPPER CABINET - OPEN UNIT ELEVATION AND SECTION	
PROJECT NUMBER 28344	SCALE AS NOTED	DATE JUNE 18 2009

**BARR
RYDER**
ARCHITECTS
& PLANNERS
210, 10190 - 104 St.
Edmonton, Alberta
Canada T5J 1A7
Tel: (403) 423-8606
Fax: (403) 429-3962



1 ELEVATION
MW-10 1:20

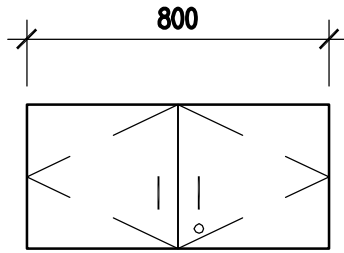


2 SECTION
MW-10 1:10

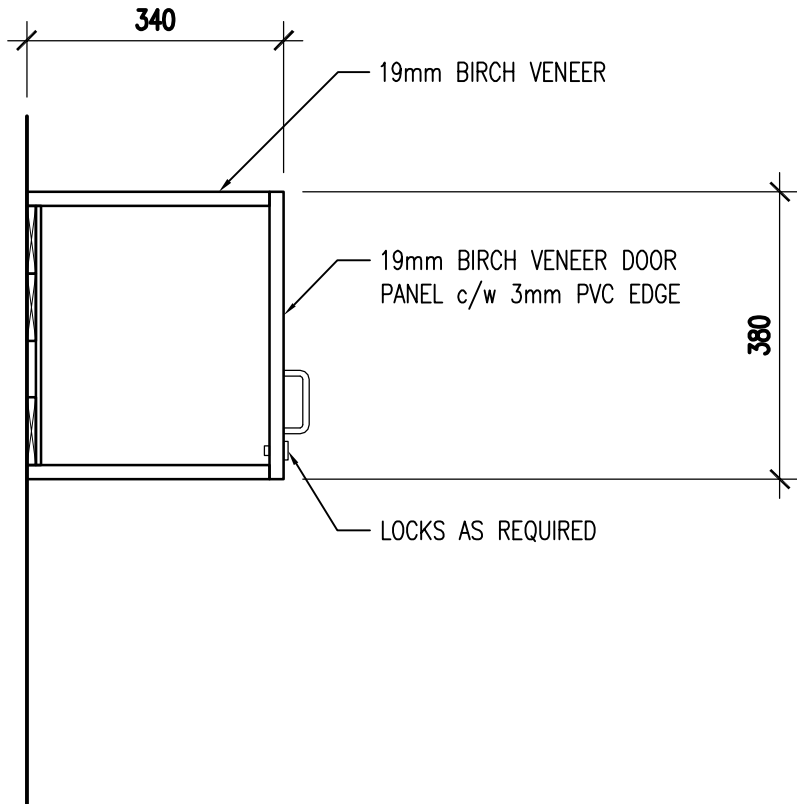
This drawing plotted

PROJECT	ALBERTA SCHOOLS ALTERNATIVE PROCUREMENT (ASAP II) ALBERTA INFRASTRUCTURE	MW-10
SHEET TITLE	SCIENCE ROOM UPPER CABINET - DOOR W/ GLAZING ELEVATION AND SECTION	
PROJECT NUMBER 28344	SCALE AS NOTED	DATE JUNE 18 2009

**BARR
RYDER**
ARCHITECTS
& PLANNERS
210, 10190 - 104 St.
Edmonton, Alberta
Canada T5J 1A7
Tel: (403) 423-8606
Fax: (403) 429-3962



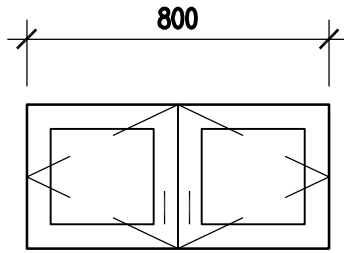
1 ELEVATION
MW-11 1:20



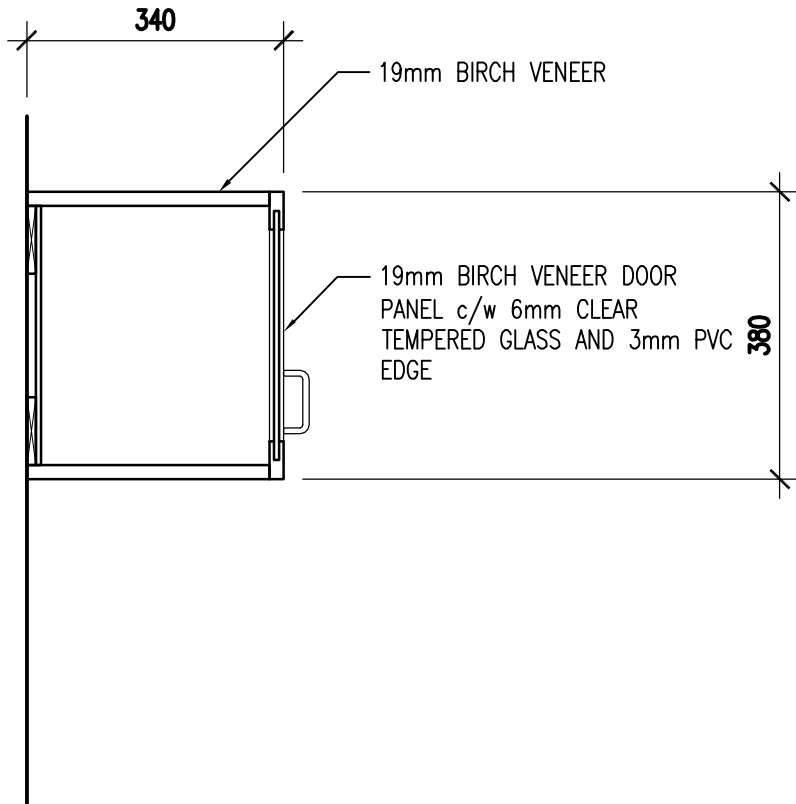
2 SECTION
MW-11 1:10

This drawing plotted

PROJECT	ALBERTA SCHOOLS ALTERNATIVE PROCUREMENT (ASAP II) ALBERTA INFRASTRUCTURE	MW-11
SHEET TITLE	UPPER CABINET - DOOR (SHORT) UNIT ELEVATION AND SECTION	BARR RYDER ARCHITECTS & PLANNERS 210, 10190 - 104 St. Edmonton, Alberta Canada T5J 1A7 Tel: (403) 423-6606 Fax: (403) 429-3962
PROJECT NUMBER	SCALE	
28344	AS NOTED	JUNE 18 2009



1 ELEVATION
MW-12 1:20

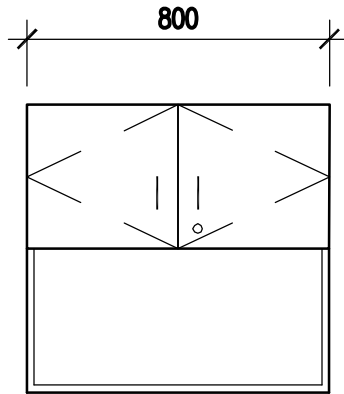


2 SECTION
MW-12 1:10

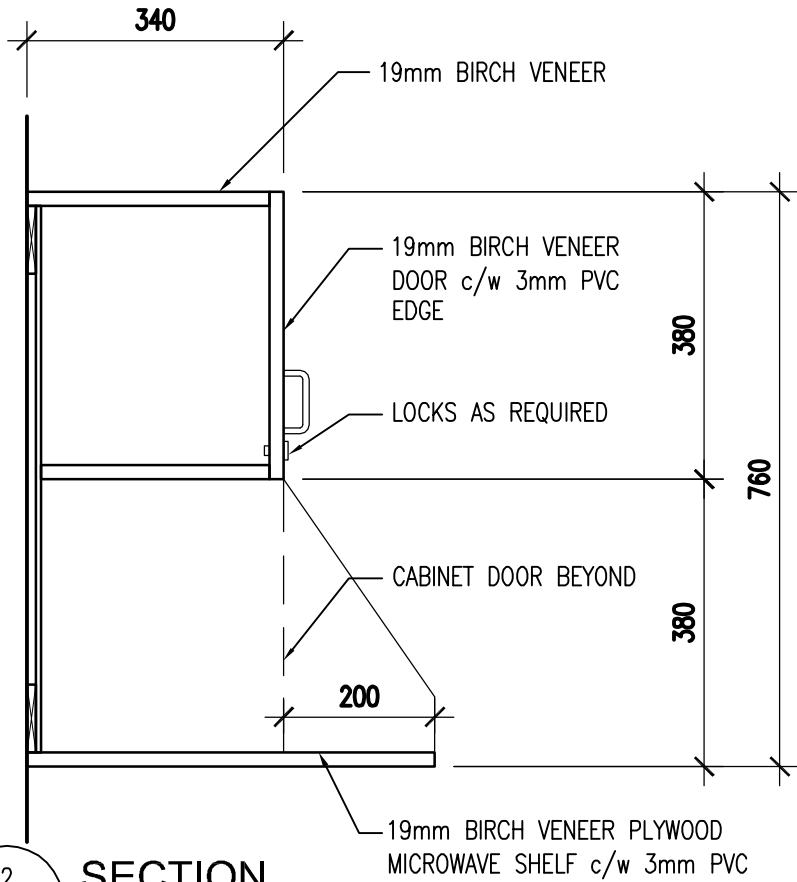
This drawing plotted

PROJECT	ALBERTA SCHOOLS ALTERNATIVE PROCUREMENT (ASAP II) ALBERTA INFRASTRUCTURE	MW-12
SHEET TITLE	SCIENCE ROOM UPPER CABINET - DOOR (SHORT) W/ GLAZING ELEVATION AND SECTION	
PROJECT NUMBER	SCALE	DATE
28344	AS NOTED	JUNE 18 2009

**BARR
RYDER**
ARCHITECTS
& PLANNERS
210, 10190 - 104 St.
Edmonton, Alberta
Canada T5J 1A7
Tel: (403) 423-8606
Fax: (403) 429-3962



1 ELEVATION
MW-13 1:20



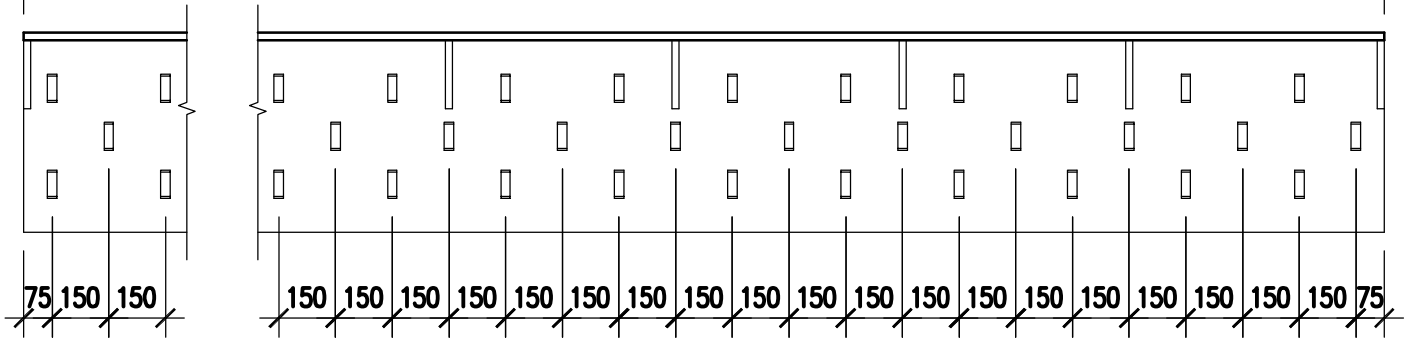
2 SECTION
MW-13 1:10

This drawing plotted

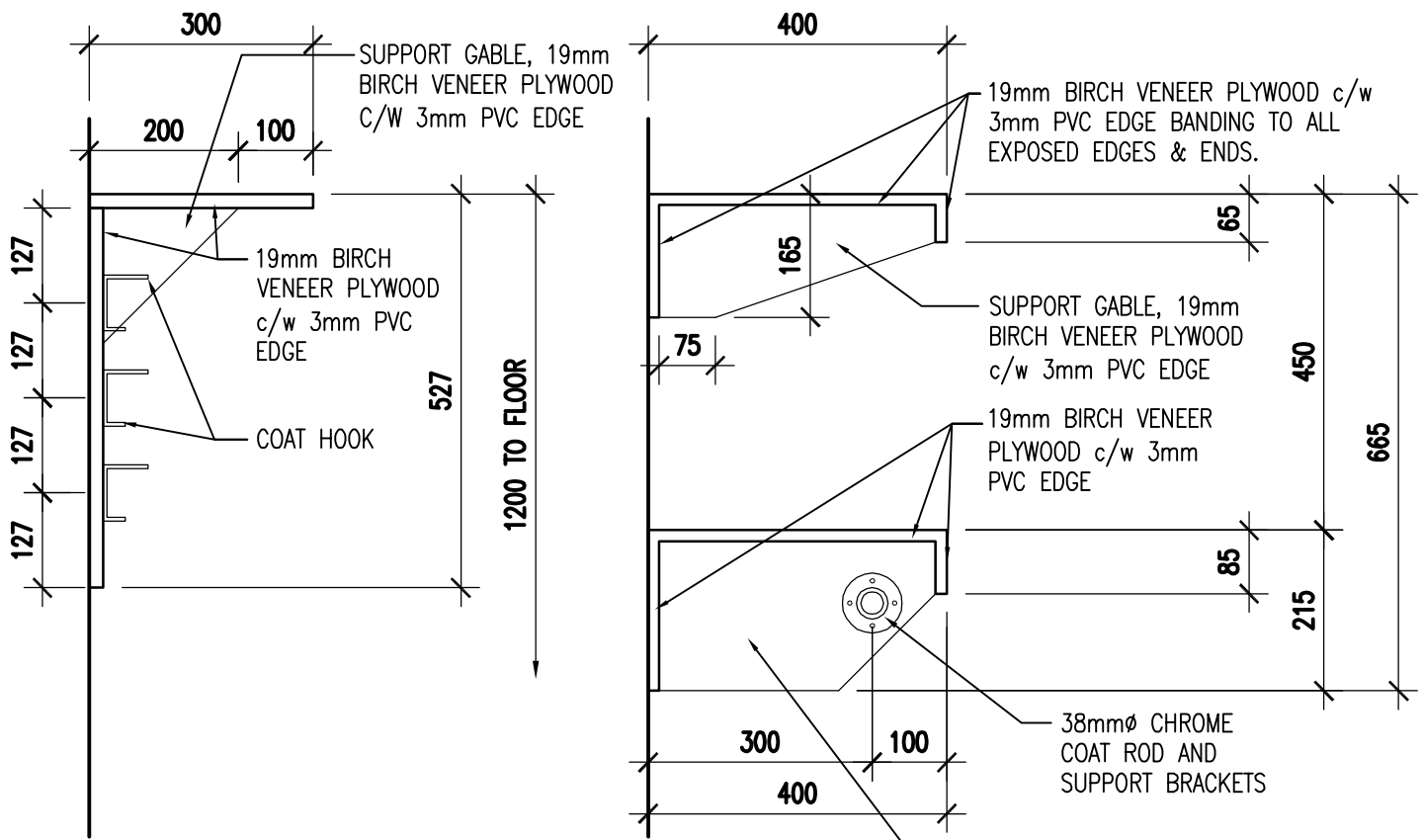
PROJECT	ALBERTA SCHOOLS ALTERNATIVE PROCUREMENT (ASAP II) ALBERTA INFRASTRUCTURE	MW-13
SHEET TITLE	UPPER CABINET - MICROWAVE UNIT ELEVATION AND SECTION	
PROJECT NUMBER 28344	SCALE AS NOTED	DATE JUNE 18 2009

BARR RYDER
ARCHITECTS & PLANNERS
210, 10190 - 104 St.
Edmonton, Alberta
Canada T5J 1A7
Tel: (403) 423-6606
Fax: (403) 429-3962

4800 - 32 HOOKS



1 **COAT HOOKS ELEVATION**
MW-14 1:20

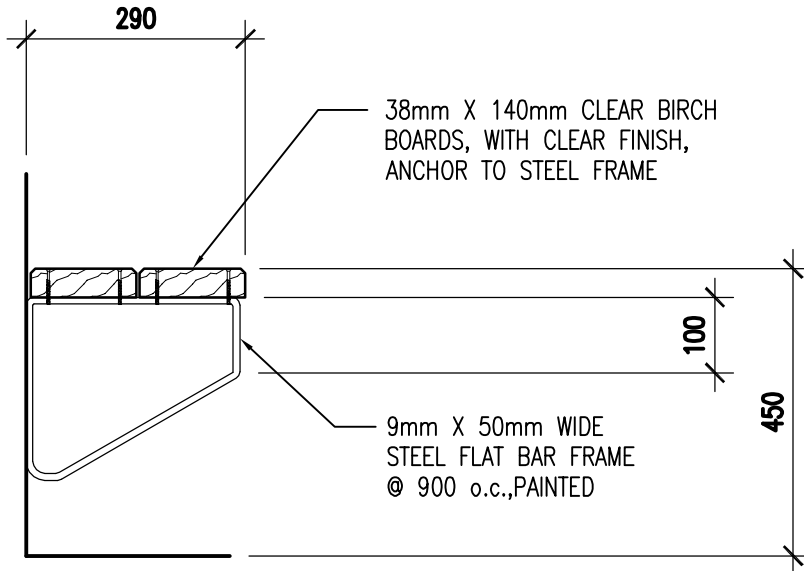


2 **COAT HOOKS AND SHELF**
MW-14 1:10

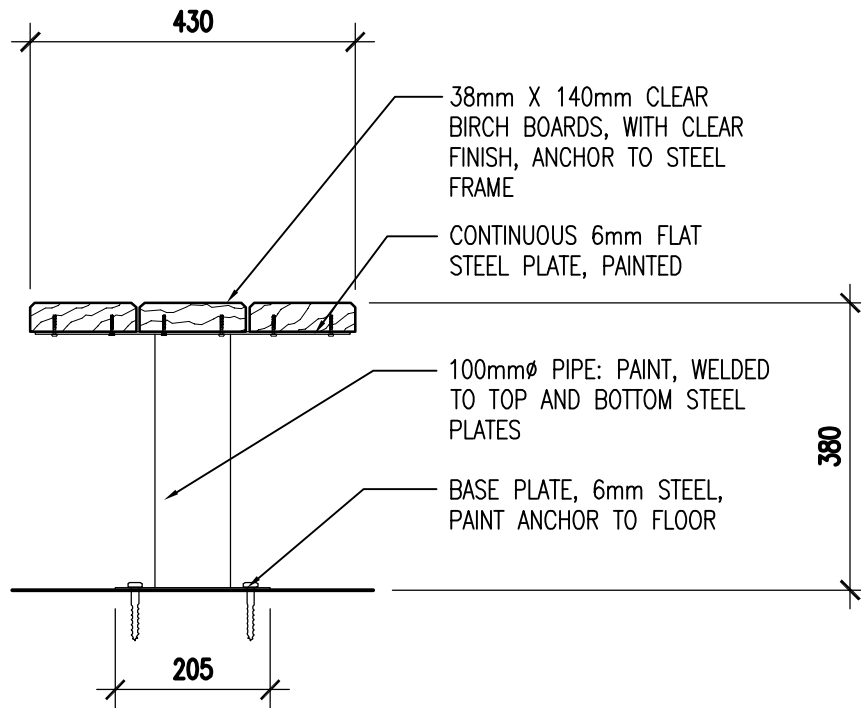
3 **COAT ROD AND SHELF**
MW-14 1:10

This drawing plotted

PROJECT	ALBERTA SCHOOLS ALTERNATIVE PROCUREMENT (ASAP II) ALBERTA INFRASTRUCTURE		MW-14
SHEET TITLE	COAT HOOKS AND SHELF - ELEVATION AND DETAIL COAT ROD AND SHELF DETAIL		
PROJECT NUMBER	SCALE	DATE	BARR RYDER ARCHITECTS & PLANNERS 210, 10190 - 104 St. Edmonton, Alberta Canada T5J 1A7 Tel: (403) 423-6606 Fax: (403) 429-3962
28344	AS NOTED	JUNE 18 2009	



1 LOCKER ROOM BENCH AT WALL
MW-15 1:10



2 LOCKER ROOM BENCH (MIDDLE ROW)
MW-15 1:10

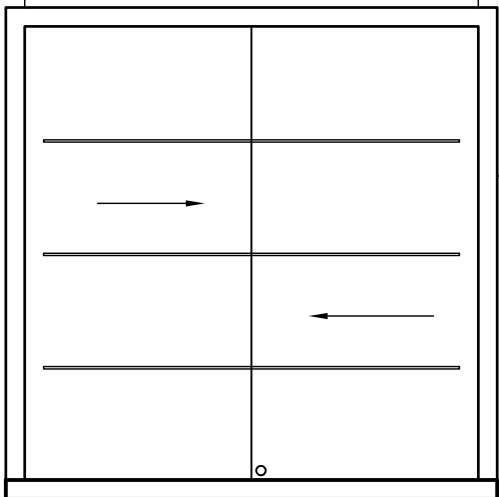
This drawing plotted

PROJECT	ALBERTA SCHOOLS ALTERNATIVE PROCUREMENT (ASAP II) ALBERTA INFRASTRUCTURE	MW-15
SHEET TITLE	LOCKER ROOM BENCH DETAILS	
PROJECT NUMBER	SCALE	DATE
28344	AS NOTED	JUNE 18 2009

BARR RYDER ARCHITECTS & PLANNERS

210, 10190 - 104 St.
Edmonton, Alberta
Canada T5J 1A7
Tel: (403) 423-6606
Fax: (403) 429-3962

REFER TO PLAN



CONTINUOUS BIRCH VENEER TRIM

600

PROVIDE BLOCKING AT WALL

LIGHT FIXTURE
EGG CRATE CEILING
6mm TEMPERED GLASS SLIDING DOORS ARRISED EDGE TREATMENT & RECESSED FINGER PULL

6mm TEMPERED GLASS SHELF C/W PENCIL EDGE

TACKBOARD ON 19mm PLYWOOD

RECESSED STEEL SHELF STANDARDS

19mm BIRCH VENEER PLYWOOD GABLES

PLASTIC LAMINATE IN 19mm PLYWOOD

GLASS DOOR LOCK

GYPSUM BOARD PAINTED

METAL STUDS

100mm RUBBER BASE

1440

50

760

DISPLAY CABINET ELEVATION

1
MW-16

1:20

SECTION

2
MW-16

1:20

1

This drawing plotted

PROJECT **ARDROSSAN RECREATION COMPLEX**

SHEET TITLE **DISPLAY CASE ELEVATION AND SECTION**

PROJECT NUMBER **29311**

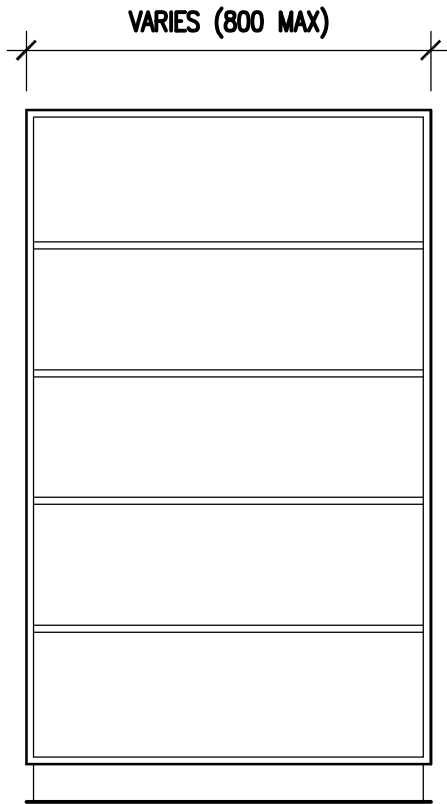
SCALE **AS NOTED**

DATE **JANUARY, 2010**

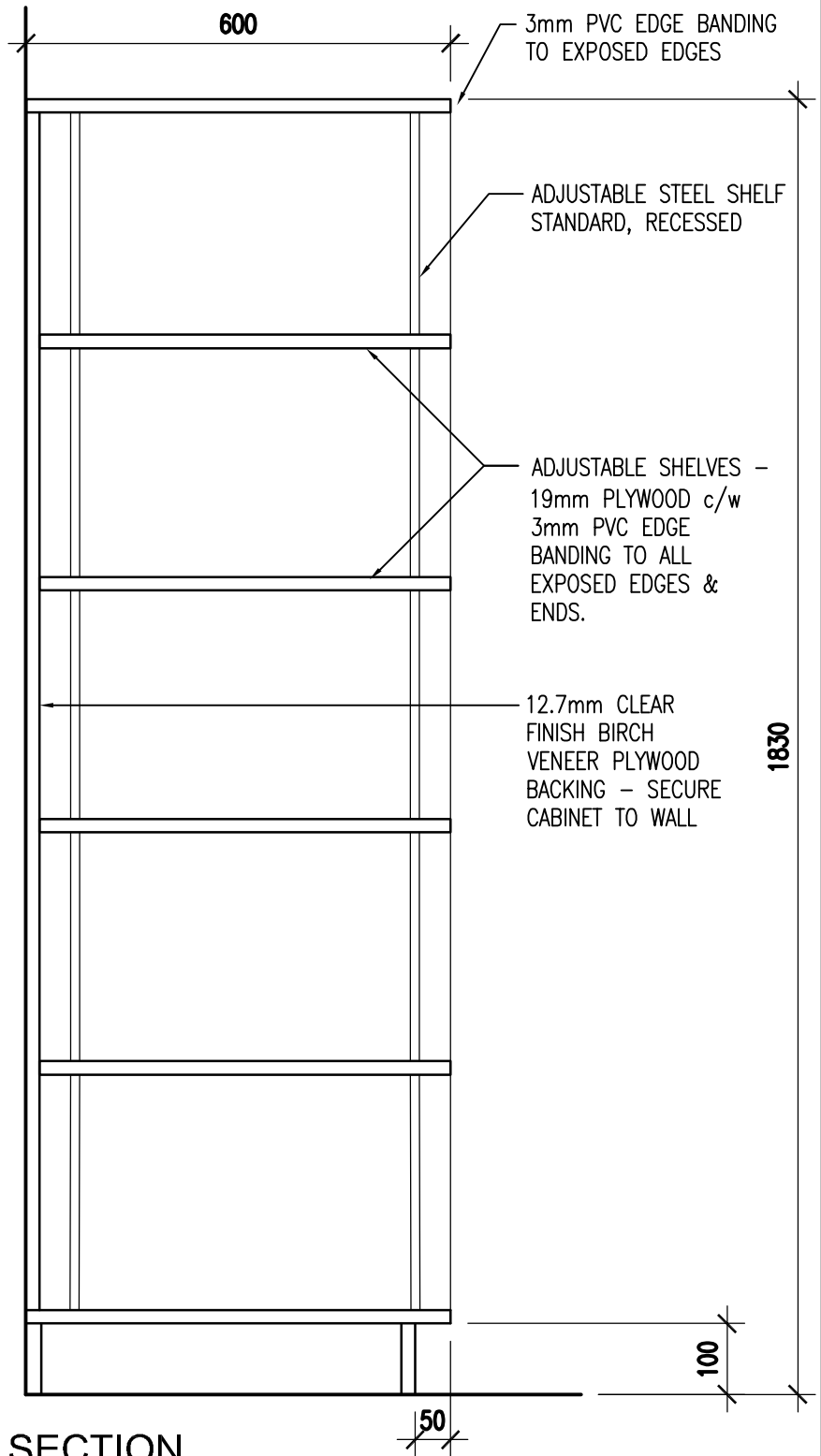
MW-16

BARR RYDER ARCHITECTS & PLANNERS

210, 10190 - 104 St.
Edmonton, Alberta
Canada T5J 1A7
Tel: (403) 423-6606
Fax: (403) 429-3962



1 **ELEVATION**
MW-17 1:20

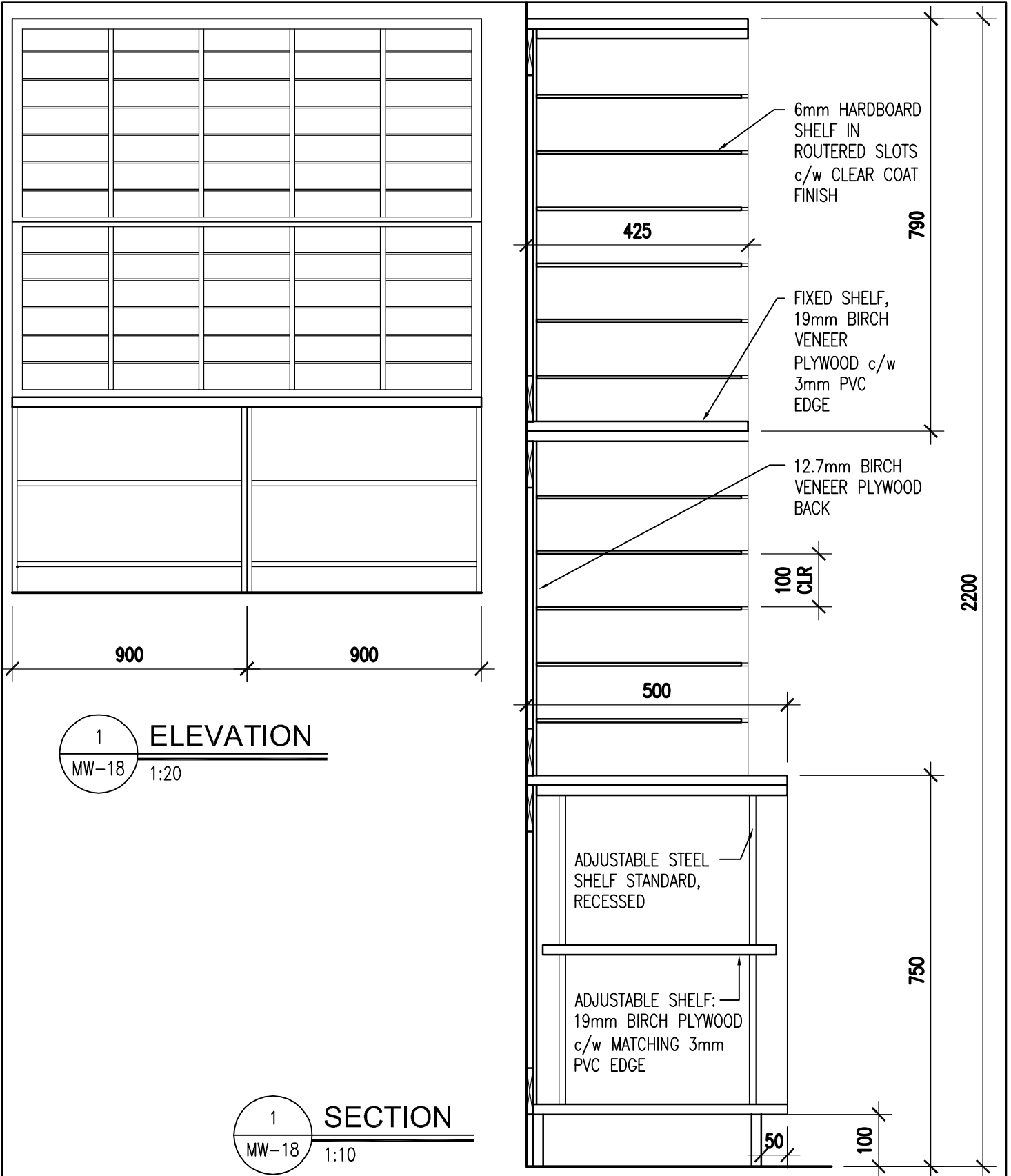


2 **SECTION**
MW-17 1:10

This drawing plotted

<small>PROJECT</small>	ALBERTA SCHOOLS ALTERNATIVE PROCUREMENT (ASAP II) ALBERTA INFRASTRUCTURE	MW-17
<small>SHEET TITLE</small>	STORAGE SHELVING ELEVATION AND SECTION	
<small>PROJECT NUMBER</small> 28344	<small>SCALE</small> AS NOTED	<small>DATE</small> JUNE 18 2009

**BARR
RYDER**
ARCHITECTS
& PLANNERS
210, 10190 - 104 St.
Edmonton, Alberta
Canada T5J 1A7
Tel: (403) 423-8606
Fax: (403) 429-3962

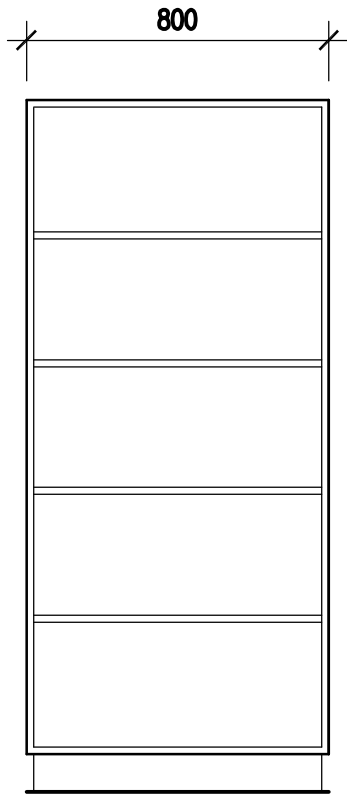


This drawing plotted

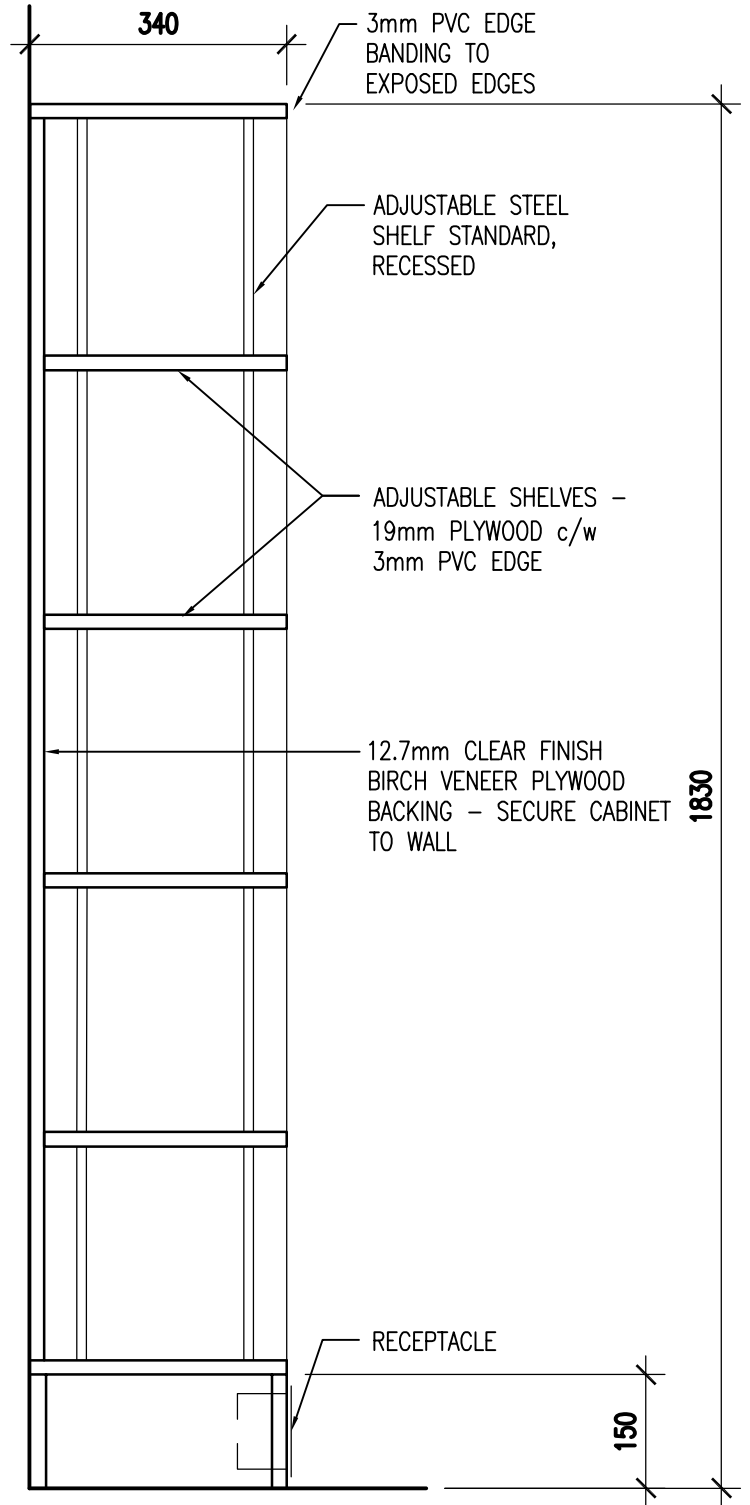
PROJECT	ALBERTA SCHOOLS ALTERNATIVE PROCUREMENT (ASAP II) ALBERTA INFRASTRUCTURE	MW-18
SHEET TITLE	MAIL BOX - ELEVATION AND SECTION	
PROJECT NUMBER	SCALE	DATE
28344	AS NOTED	JUNE 18 2009

BARR RYDER ARCHITECTS & PLANNERS

210, 10190 - 104 St.
Edmonton, Alberta
Canada T5J 1A7
Tel: (403) 423-6606
Fax: (403) 429-3962



1 **ELEVATION**
MW-19 1:20

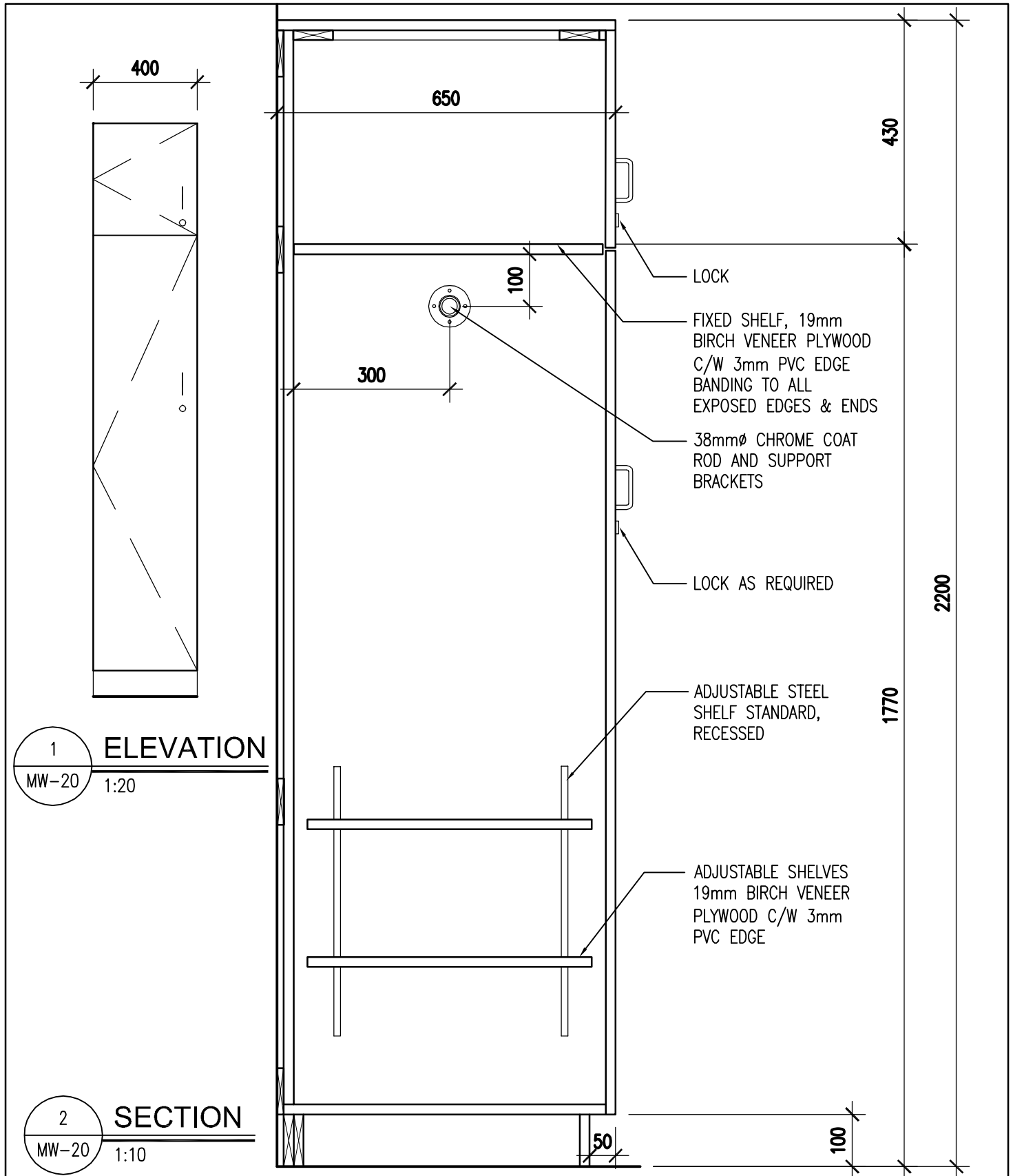


2 **SECTION**
MW-19 1:10

This drawing plotted

PROJECT	ALBERTA SCHOOLS ALTERNATIVE PROCUREMENT (ASAP II) ALBERTA INFRASTRUCTURE	MW-19
SHEET TITLE	LIBRARY SHELVING ELEVATION AND SECTION	
PROJECT NUMBER	SCALE	DATE
28344	AS NOTED	JUNE 18 2009

**BARR
RYDER**
ARCHITECTS
& PLANNERS
210, 10190 - 104 St.
Edmonton, Alberta
Canada T5J 1A7
Tel: (403) 423-6606
Fax: (403) 429-3962



1 ELEVATION
MW-20 1:20

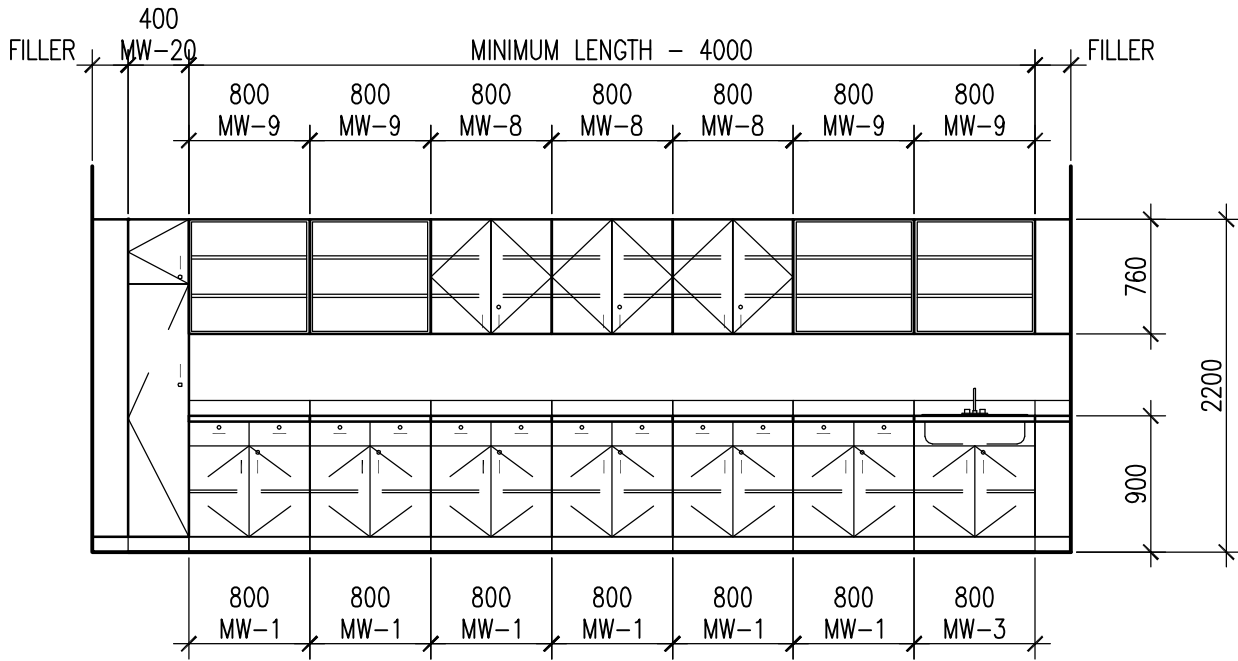
2 SECTION
MW-20 1:10

This drawing plotted

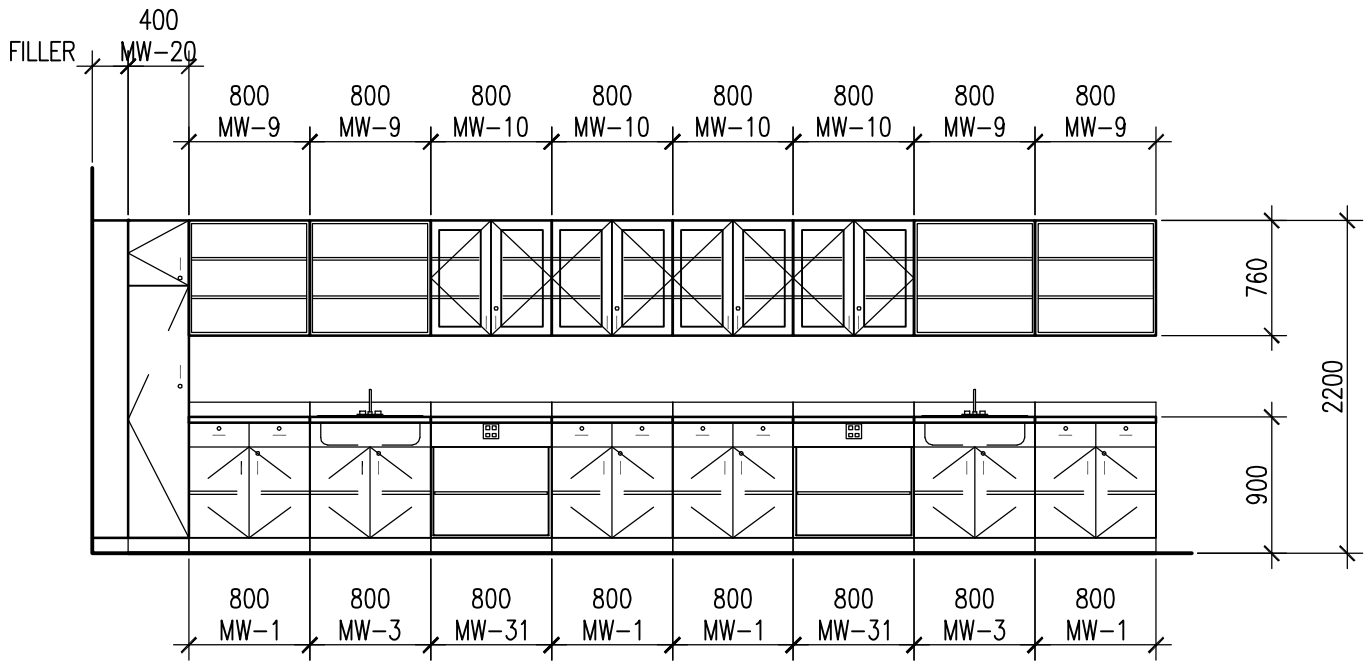
PROJECT	ALBERTA SCHOOLS ALTERNATIVE PROCUREMENT (ASAP II) ALBERTA INFRASTRUCTURE	MW-20
SHEET TITLE	TEACHER LOCKER ELEVATION AND SECTION	
PROJECT NUMBER	SCALE	DATE
28344	AS NOTED	JUNE 18 2009

**BARR
RYDER** ARCHITECTS & PLANNERS

210, 10190 - 104 St.
Edmonton, Alberta
Canada T5J 1A7
Tel: (403) 423-6606
Fax: (403) 429-3962



1 STANDARD CLASSROOM MILLWORK
 MW-21 1:50

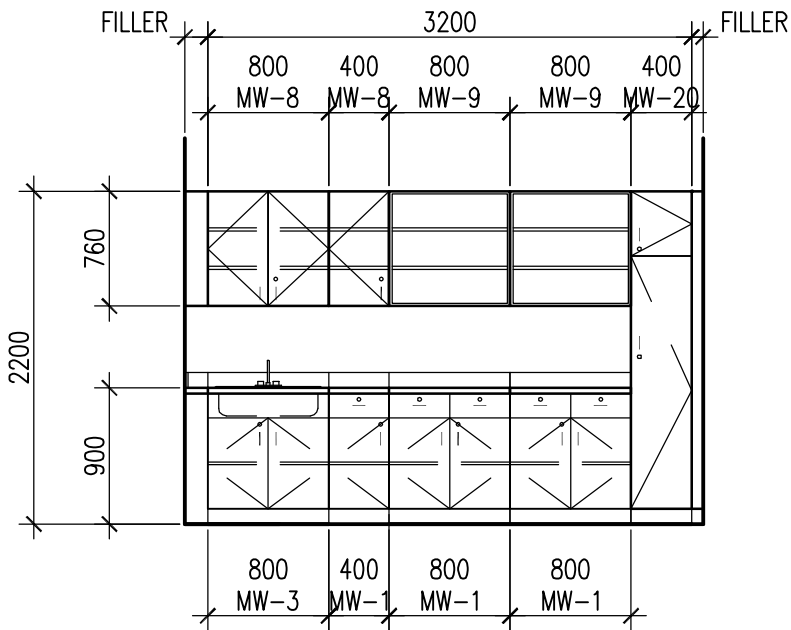


2 STANDARD SCIENCE CLASSROOM MILLWORK
 MW-21 1:50

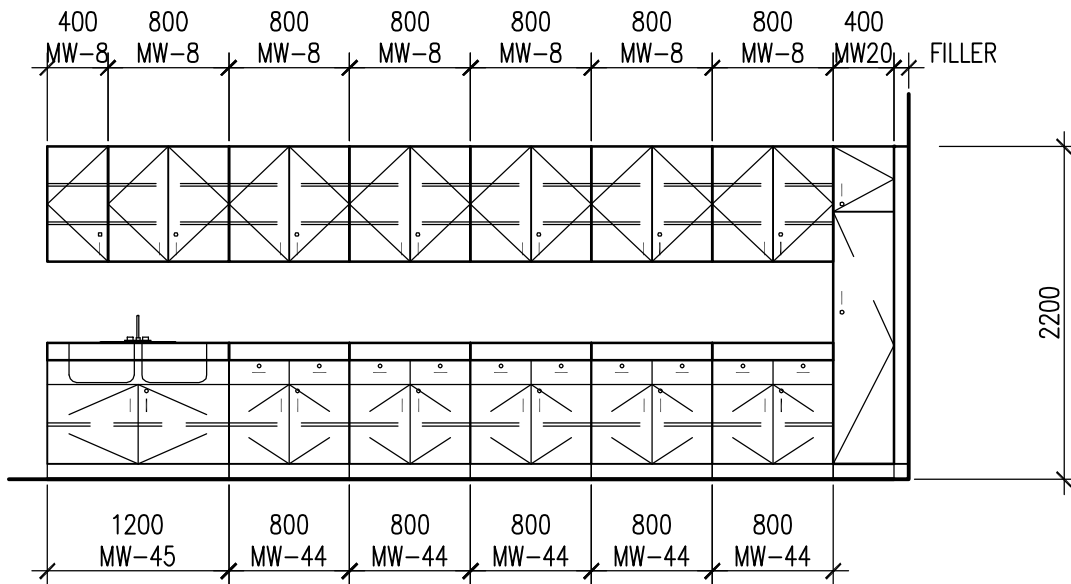
This drawing plotted

PROJECT	ALBERTA SCHOOLS ALTERNATIVE PROCUREMENT (ASAP II) ALBERTA INFRASTRUCTURE	MW-21
SHEET TITLE	STANDARD CLASSROOM ROOM AND STANDARD SCIENCE ROOM MILLWORK	
PROJECT NUMBER 28344	SCALE AS NOTED	DATE JUNE 18 2009

BARR RYDER ARCHITECTS & PLANNERS
 210, 10190 - 104 St.
 Edmonton, Alberta
 Canada T5J 1A7
 Tel: (403) 423-6606
 Fax: (403) 429-3962



1 **MODULAR CLASSROOM MILLWORK (TYPICAL)**
MW-22 1:50

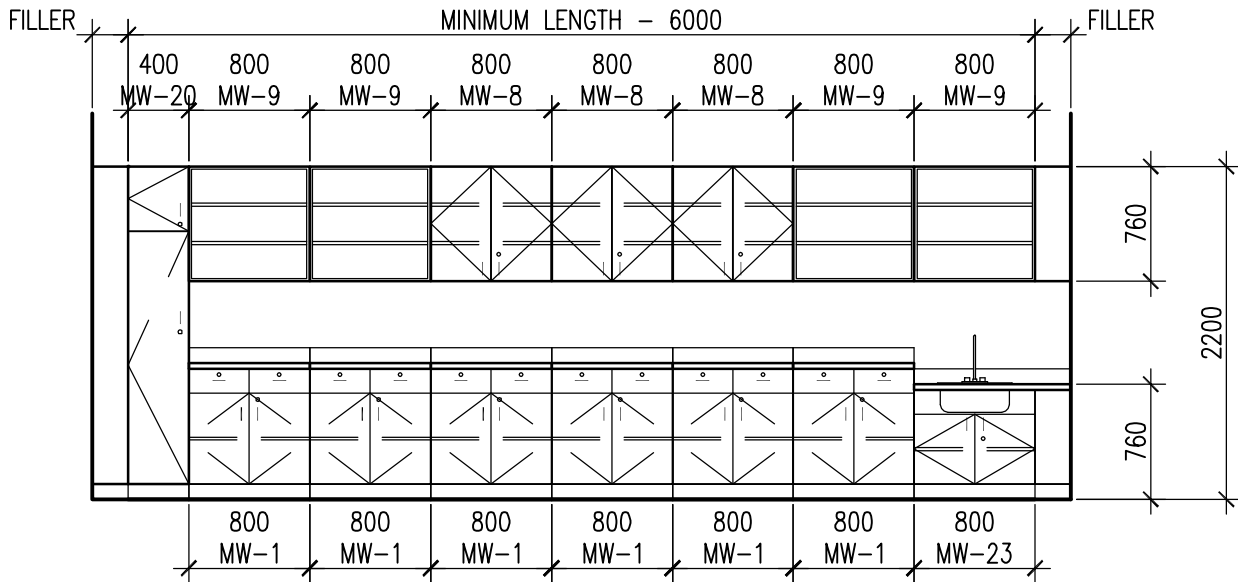


2 **CTS ROOM MILLWORK**
MW-22 1:50

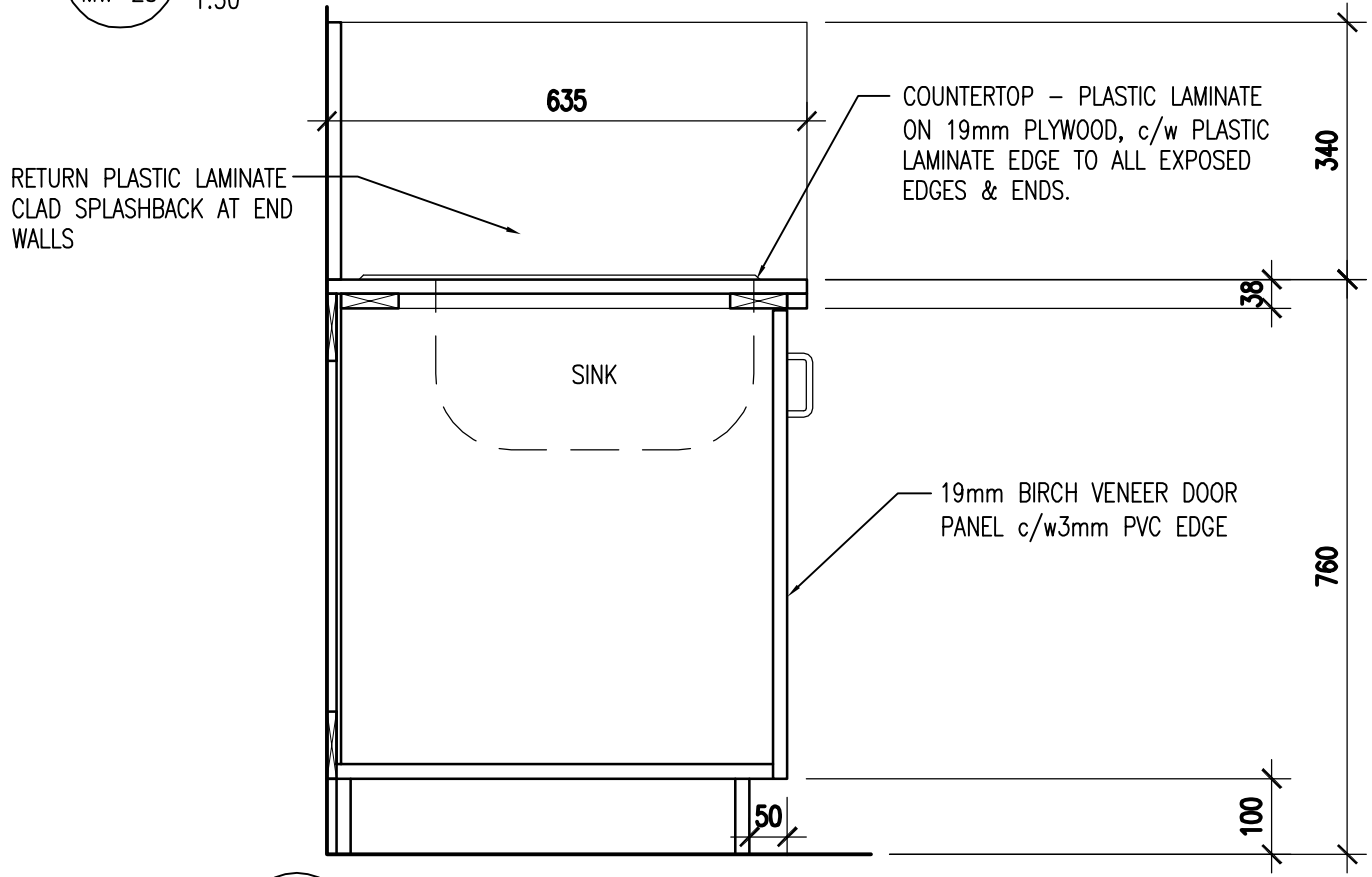
This drawing plotted

PROJECT	ALBERTA SCHOOLS ALTERNATIVE PROCUREMENT (ASAP II) ALBERTA INFRASTRUCTURE	MW-22
SHEET TITLE	MODULAR CLASSROOM AND CTS ROOM MILLWORK	
PROJECT NUMBER 28344	SCALE AS NOTED	DATE JUNE 18 2009

**BARR
RYDER**
ARCHITECTS
& PLANNERS
210, 10190 - 104 St.
Edmonton, Alberta
Canada T5J 1A7
Tel: (403) 423-6606
Fax: (403) 429-3962



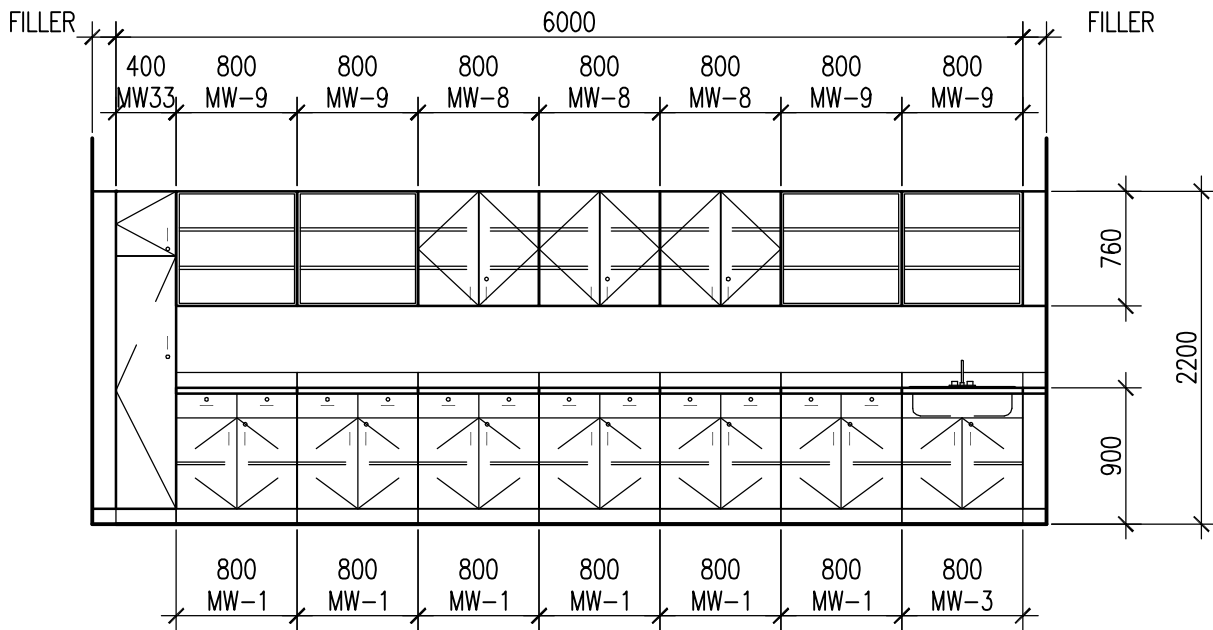
1 **ECS CLASSROOM MILLWORK**
MW-23 1:50



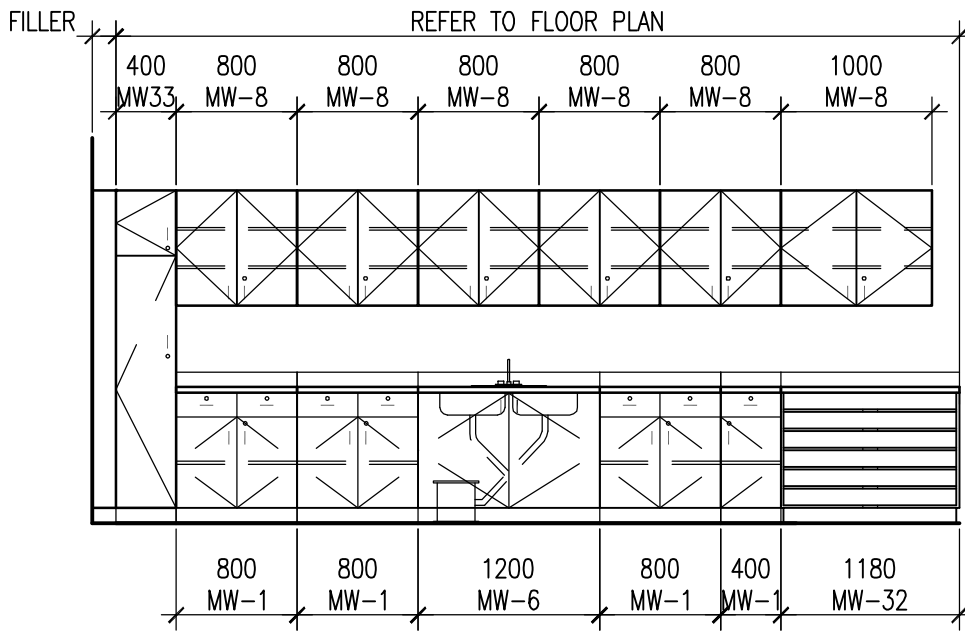
2 **SECTION (SINK UNIT SHORT)**
MW-23 1:10

This drawing plotted

PROJECT	ALBERTA SCHOOLS ALTERNATIVE PROCUREMENT (ASAP II) ALBERTA INFRASTRUCTURE		MW-23
SHEET TITLE	ECS CLASSROOM MILLWORK		
PROJECT NUMBER	SCALE	DATE	BARR RYDER ARCHITECTS & PLANNERS 210, 10190 - 104 St. Edmonton, Alberta Canada T5J 1A7 Tel: (403) 423-8606 Fax: (403) 429-3962
28344	AS NOTED	JUNE 18 2009	



1 **MUSIC ROOM MILLWORK**
MW-24 1:50

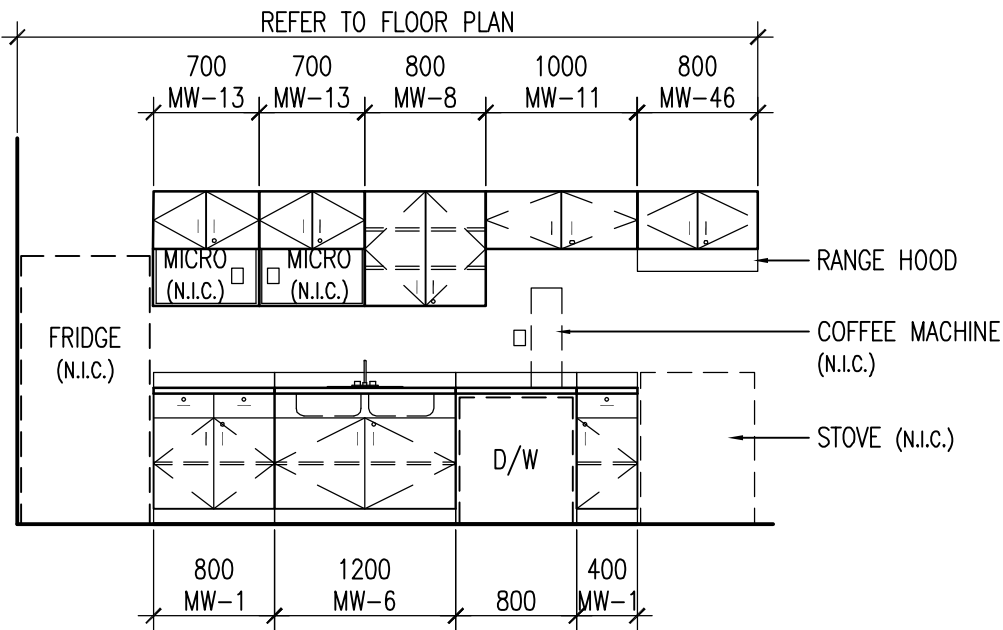


2 **ART ROOM MILLWORK**
MW-24 1:50

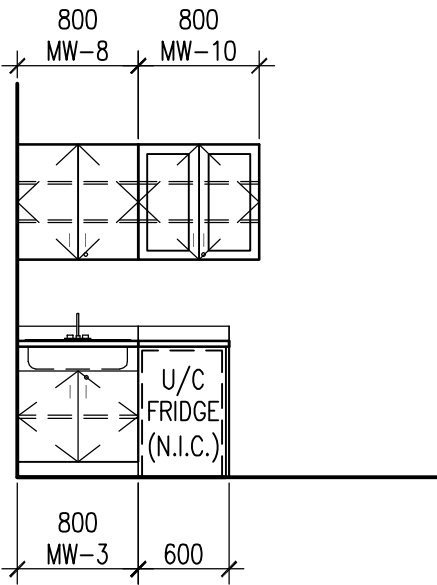
This drawing plotted

PROJECT	ALBERTA SCHOOLS ALTERNATIVE PROCUREMENT (ASAP II) ALBERTA INFRASTRUCTURE	MW-24
SHEET TITLE	MUSIC/ART CLASSROOM MILLWORK	
PROJECT NUMBER	SCALE	DATE
28344	AS NOTED	JUNE 18 2009

**BARR
RYDER**
 ARCHITECTS
& PLANNERS
210, 10190 - 104 St.
Edmonton, Alberta
Canada T5J 1A7
Tel: (403) 423-6606
Fax: (403) 429-3962



1 **STAFF KITCHEN MILLWORK**
MW-25 1:50

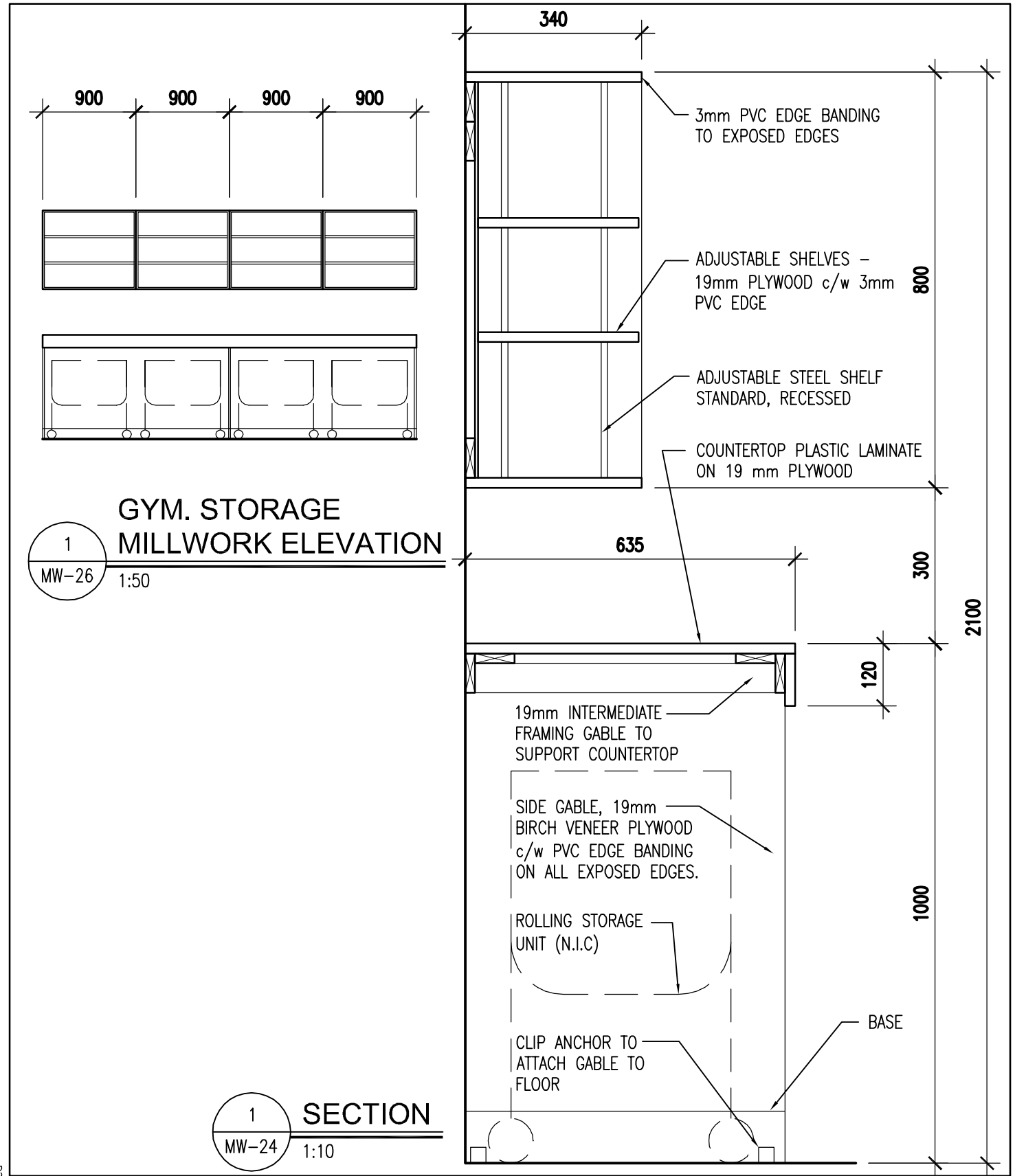


2 **INFIRMARY MILLWORK**
MW-25 1:50

This drawing plotted

PROJECT	ALBERTA SCHOOLS ALTERNATIVE PROCUREMENT (ASAP II) ALBERTA INFRASTRUCTURE	MW-25
SHEET TITLE	STAFF KITCHEN MILLWORK / INFIRMARY MILLWORK	
PROJECT NUMBER 28344	SCALE AS NOTED	DATE JULY 20 2009

**BARR
RYDER**
ARCHITECTS
& PLANNERS
210, 10190 - 104 St.
Edmonton, Alberta
Canada T5J 1A7
Tel: (403) 423-6606
Fax: (403) 429-3962



**GYM. STORAGE
MILLWORK ELEVATION**

1
MW-26

1:50

1
MW-24

SECTION

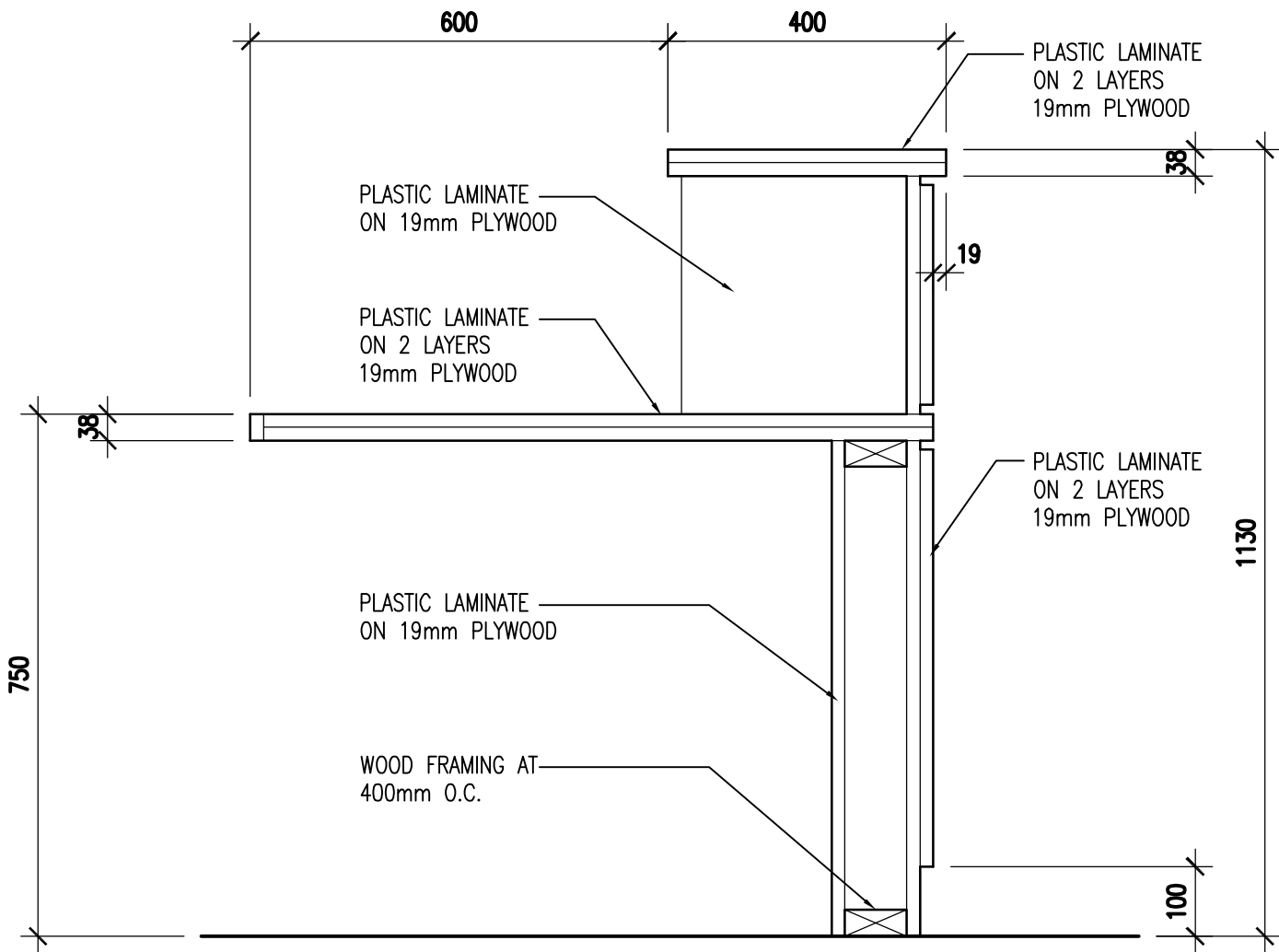
1:10

This drawing plotted

PROJECT	ALBERTA SCHOOLS ALTERNATIVE PROCUREMENT (ASAP II) ALBERTA INFRASTRUCTURE	MW-26
SHEET TITLE	GYM STORAGE UNIT ELEVATION AND SECTION	
PROJECT NUMBER	SCALE	DATE
28344	AS NOTED	JUNE 18 2009

BARR RYDER ARCHITECTS & PLANNERS

210, 10190 - 104 St.
Edmonton, Alberta
Canada T5J 1A7
Tel: (403) 423-8606
Fax: (403) 429-3962

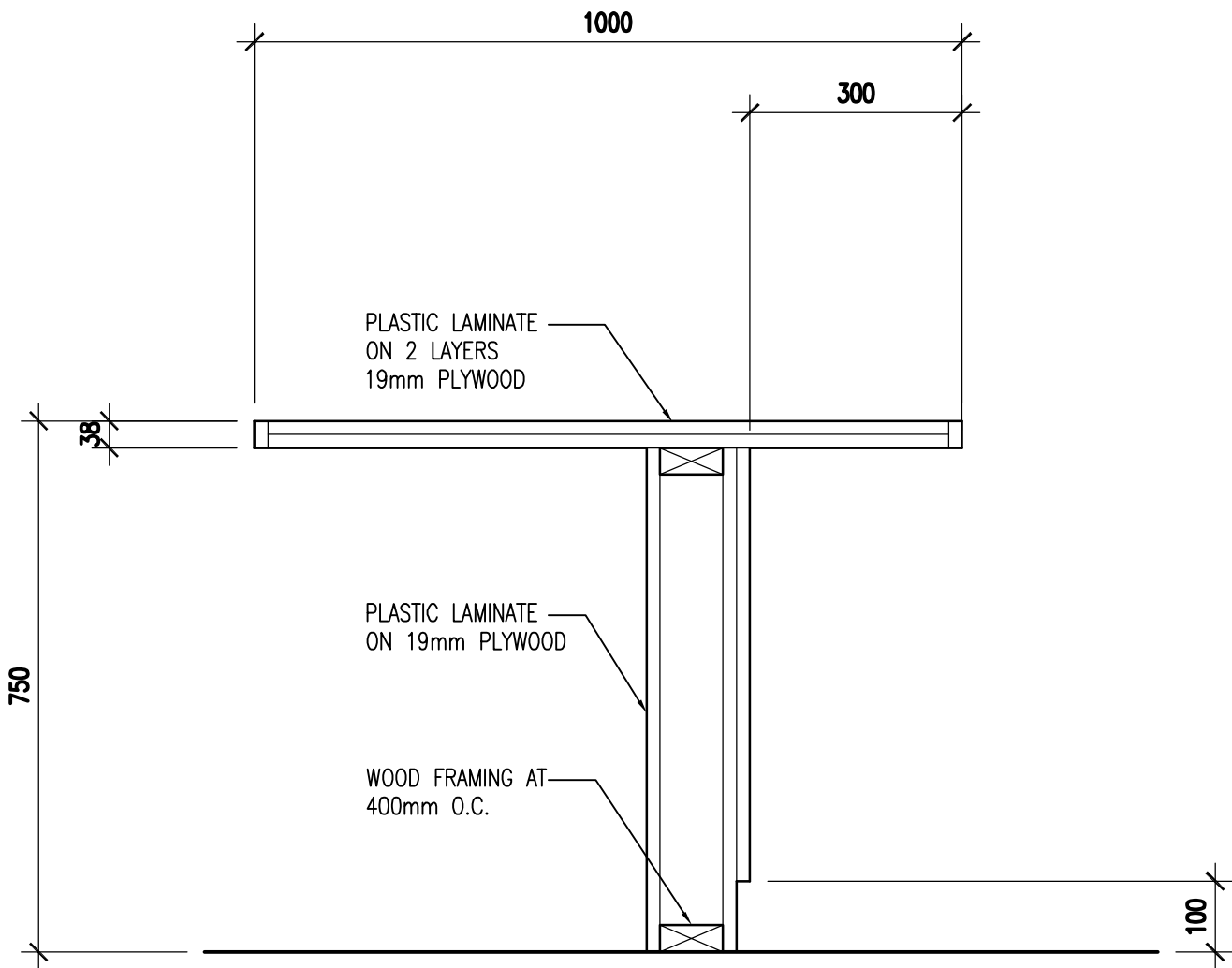


1 RECEPTION DESK OPEN SECTION
 MW-27 1:10

This drawing plotted

PROJECT	ALBERTA SCHOOLS ALTERNATIVE PROCUREMENT (ASAP II) ALBERTA INFRASTRUCTURE	MW-27
SHEET TITLE	RECEPTION DESK MILLWORK - OPEN SECTION	
PROJECT NUMBER	SCALE	DATE
28344	AS NOTED	JUNE 18 2009

BARR RYDER ARCHITECTS & PLANNERS
 210, 10190 - 104 St.
 Edmonton, Alberta
 Canada T5J 1A7
 Tel: (403) 423-8606
 Fax: (403) 429-3962

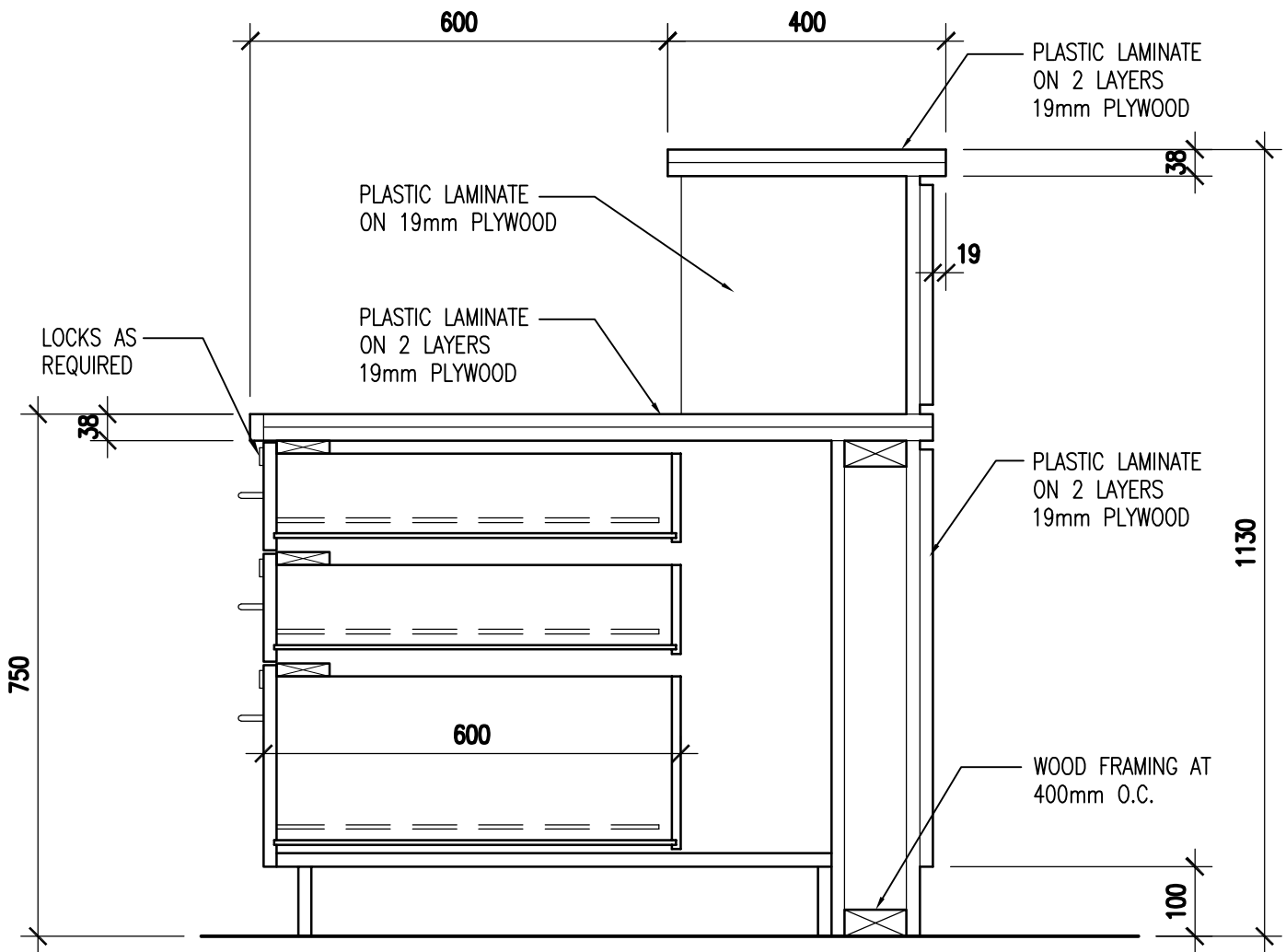


1 RECEPTION DESK BARRIER FREE SECTION
 MW-28 1:10

This drawing plotted

PROJECT	ALBERTA SCHOOLS ALTERNATIVE PROCUREMENT (ASAP II) ALBERTA INFRASTRUCTURE	MW-28
SHEET TITLE	RECEPTION DESK MILLWORK - BARRIER FREE SECTION	
PROJECT NUMBER	SCALE	DATE
28344	AS NOTED	JUNE 18 2009

BARR RYDER ARCHITECTS & PLANNERS
 210, 10190 - 104 St.
 Edmonton, Alberta
 Canada T5J 1A7
 Tel: (403) 423-8606
 Fax: (403) 429-3962

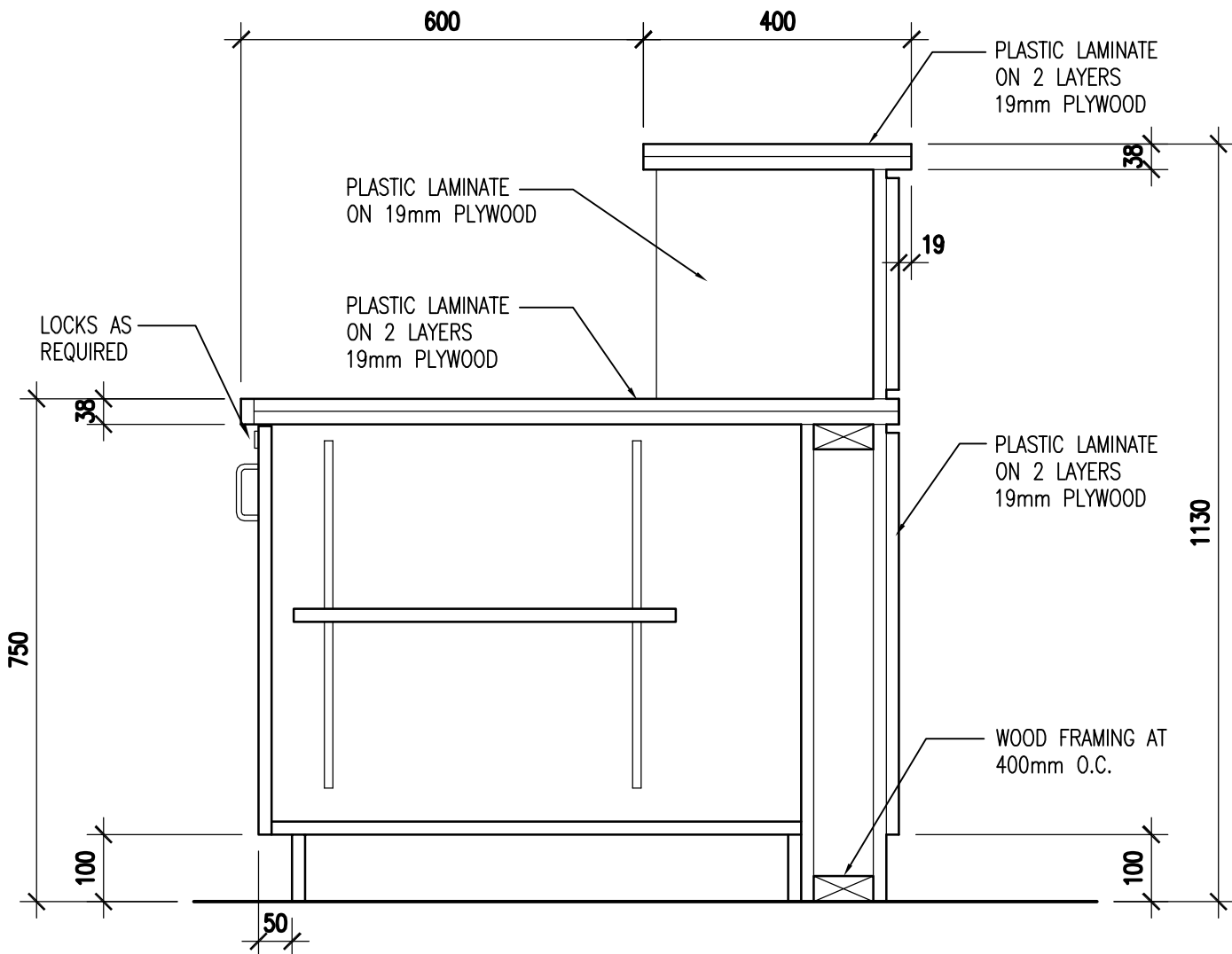


1 RECEPTION DESK DRAWER SECTION
 MW-27 1:10

This drawing plotted

PROJECT	ALBERTA SCHOOLS ALTERNATIVE PROCUREMENT (ASAP II) ALBERTA INFRASTRUCTURE	MW-29
SHEET TITLE	RECEPTION DESK - DRAWER SECTION	
PROJECT NUMBER	SCALE	DATE
28344	AS NOTED	JUNE 18 2009

BARR RYDER ARCHITECTS & PLANNERS
 210, 10190 - 104 St.
 Edmonton, Alberta
 Canada T5J 1A7
 Tel: (403) 423-8606
 Fax: (403) 429-3962

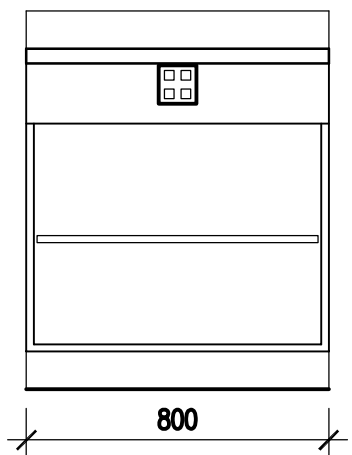


1
MW-27
RECEPTION DESK DOOR SECTION
1:10

This drawing plotted

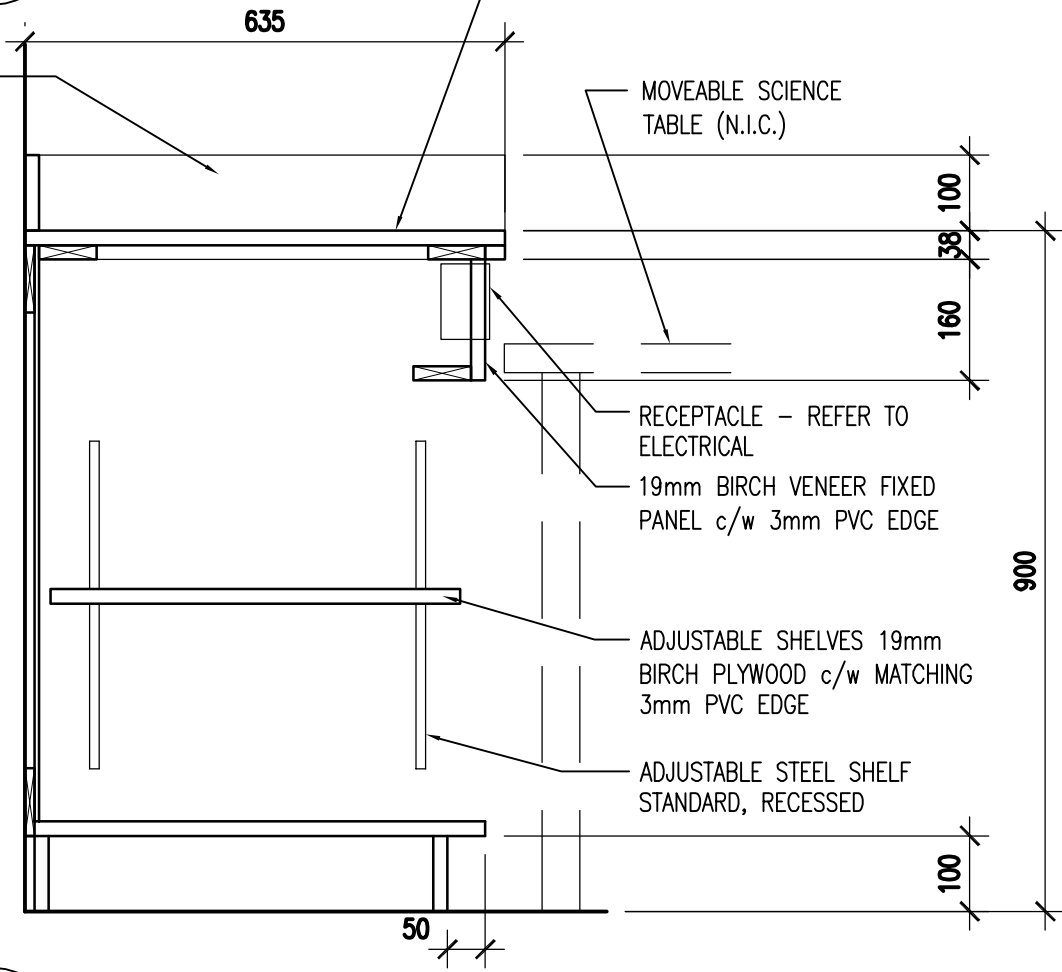
PROJECT	ALBERTA SCHOOLS ALTERNATIVE PROCUREMENT (ASAP II) ALBERTA INFRASTRUCTURE	MW-30
SHEET TITLE	RECEPTION DESK - DOOR SECTION	
PROJECT NUMBER	SCALE	DATE
28344	AS NOTED	JUNE 18 2009

BARR RYDER
ARCHITECTS & PLANNERS
210, 10190 - 104 St.
Edmonton, Alberta
Canada T5J 1A7
Tel: (403) 423-8606
Fax: (403) 429-3962



1
MW-1
ELEVATION
1:20

RETURN PLASTIC LAMINATE CLAD SPLASHBACK AT END WALLS



COUNTERTOP - CHEMICAL AND HEAT RESISTANT SOLID CORE COUNTERTOP

MOVEABLE SCIENCE TABLE (N.I.C.)

RECEPTACLE - REFER TO ELECTRICAL

19mm BIRCH VENEER FIXED PANEL c/w 3mm PVC EDGE

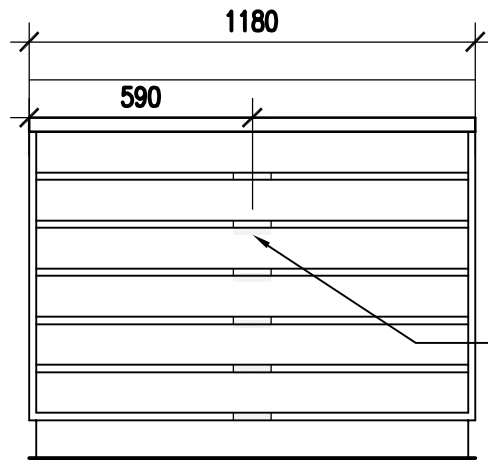
ADJUSTABLE SHELVES 19mm BIRCH PLYWOOD c/w MATCHING 3mm PVC EDGE

ADJUSTABLE STEEL SHELF STANDARD, RECESSED

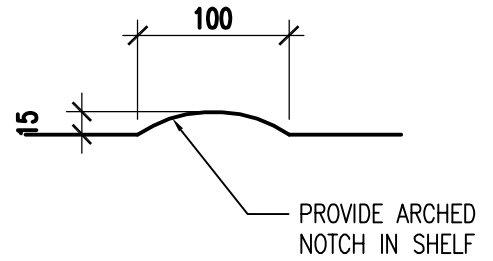
2
MW-1
SECTION
1:10

This drawing plotted

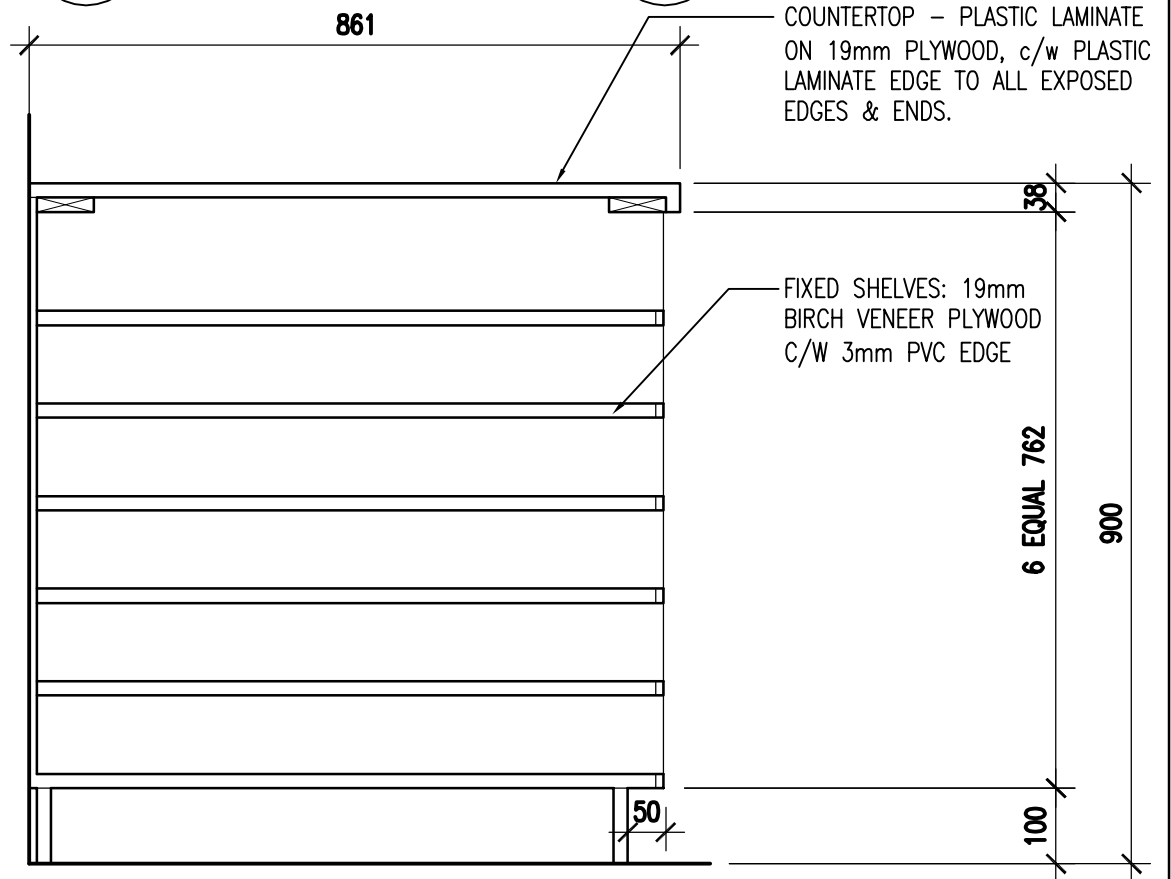
PROJECT	ALBERTA SCHOOLS ALTERNATIVE PROCUREMENT (ASAP II) ALBERTA INFRASTRUCTURE	MW-31
SHEET TITLE	SCIENCE ROOM BASE CABINET AT MOVABLE TABLE CONNECTION	
PROJECT NUMBER	SCALE	DATE
28344	AS NOTED	JUNE 18 2009
		ARCHITECTS & PLANNERS <small>210, 10190 - 104 St. Edmonton, Alberta Canada T5J 1A7 Tel: (403) 423-8606 Fax: (403) 429-3962</small>



1 **ELEVATION**
MW-32 1:20



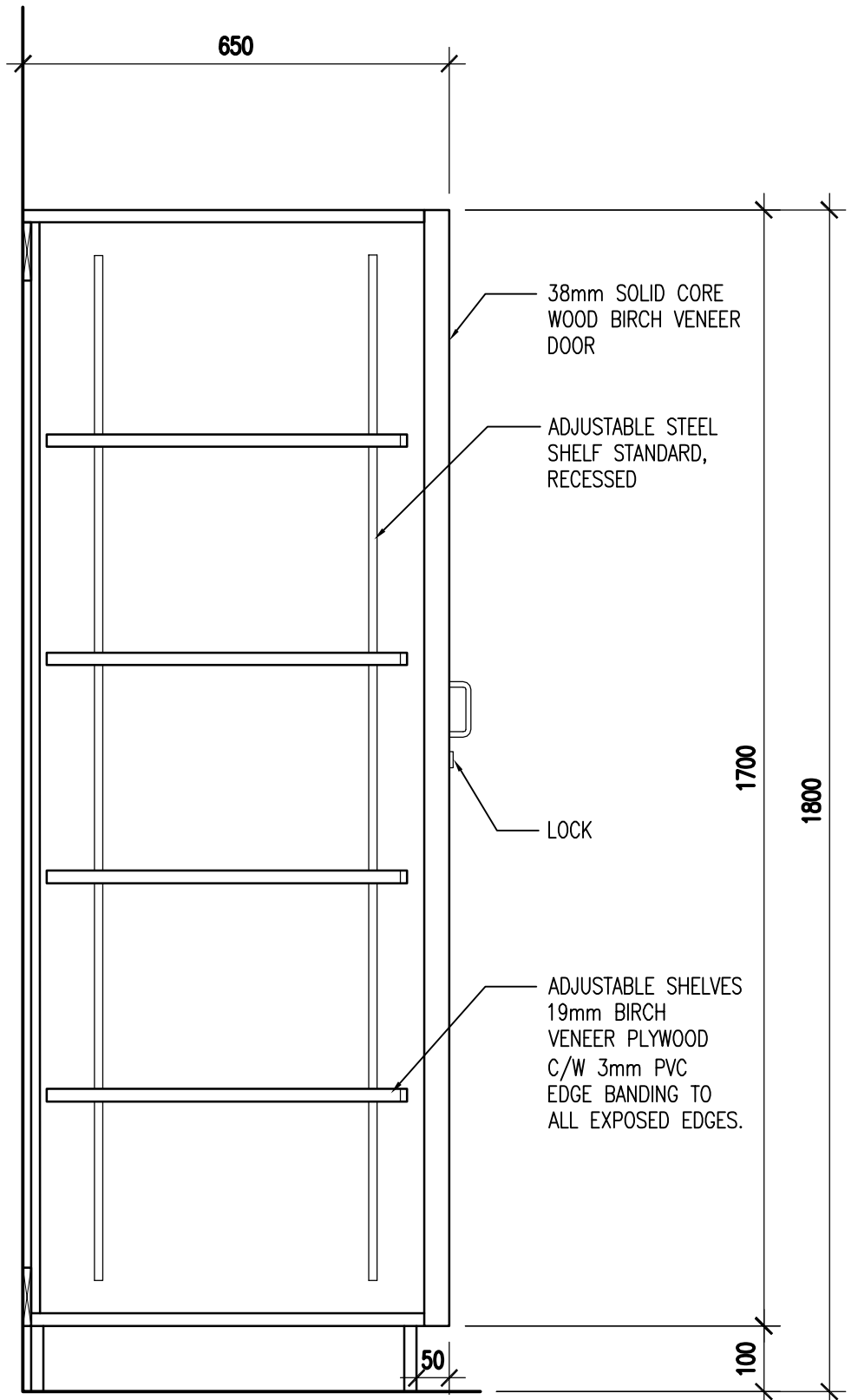
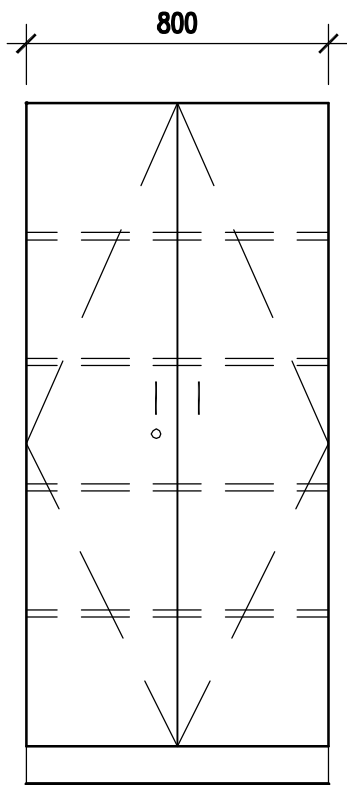
3 **SHELF PLAN**
MW-32 1:5



2 **SECTION**
MW-32 1:10

This drawing plotted

PROJECT	ALBERTA SCHOOLS ALTERNATIVE PROCUREMENT (ASAP II) ALBERTA INFRASTRUCTURE	MW-32
SHEET TITLE	ART CLASSROOM PAPER STORAGE ELEVATION AND SECTION	BARR RYDER <small>ARCHITECTS & PLANNERS</small> <small>210, 10190 - 104 St. Edmonton, Alberta Canada T5J 1A7 Tel: (403) 423-8606 Fax: (403) 429-3962</small>
PROJECT NUMBER	SCALE	
28344	AS NOTED	JUNE 18 2009



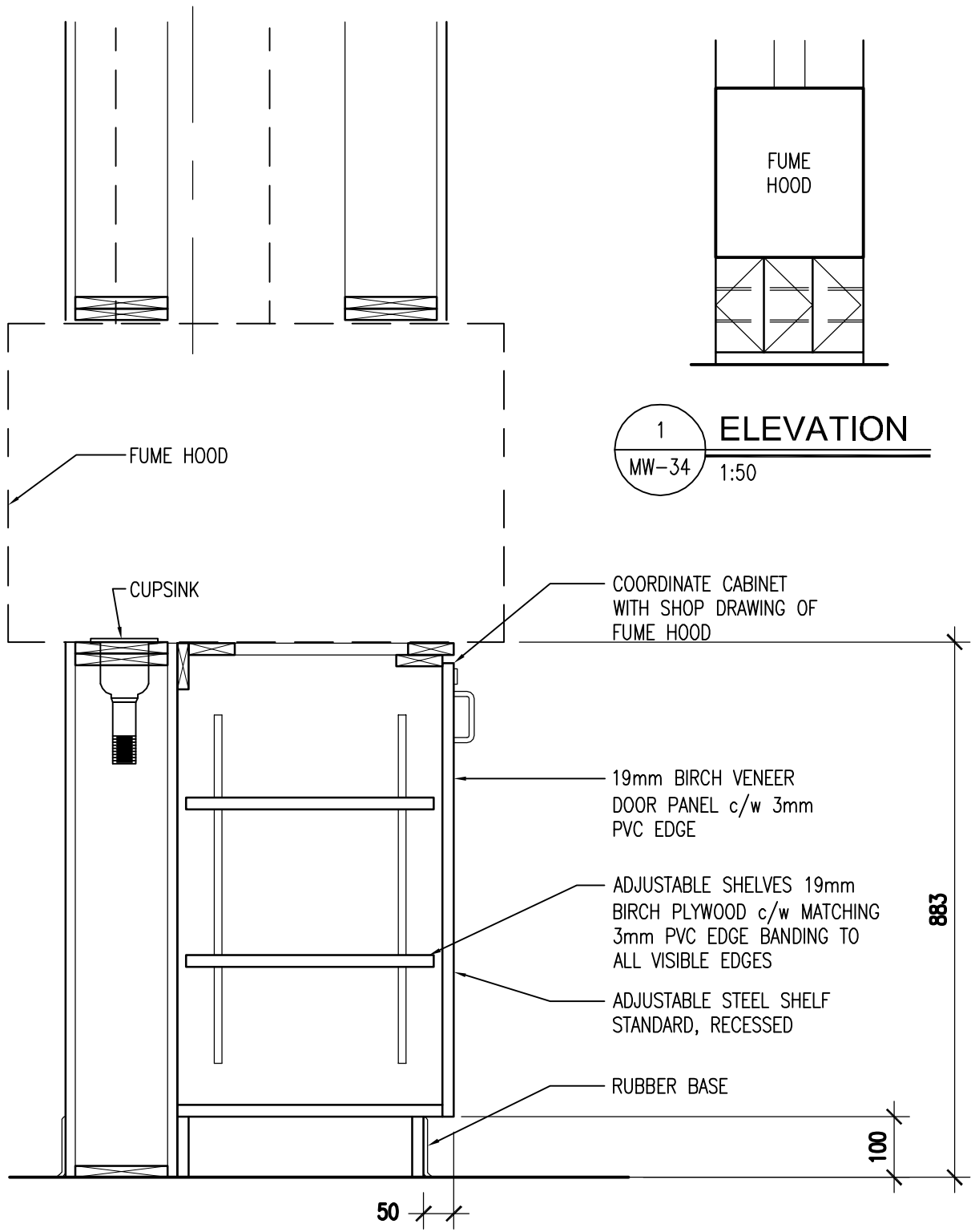
1 ELEVATION
MW-33 1:20

2 SECTION
MW-33 1:10

This drawing plotted

PROJECT	ALBERTA SCHOOLS ALTERNATIVE PROCUREMENT (ASAP II) ALBERTA INFRASTRUCTURE	MW-33
SHEET TITLE	ART CLASSROOM, FOOD AND FASHION STORAGE AND MUSIC ROOM STORAGE - ELEVATION AND SECTION	
PROJECT NUMBER	SCALE	DATE
28344	AS NOTED	JUNE 18 2009

BARR RYDER ARCHITECTS & PLANNERS
210, 10190 - 104 St.
 Edmonton, Alberta
 Canada T5J 1A7
 Tel: (403) 423-8606
 Fax: (403) 429-3962



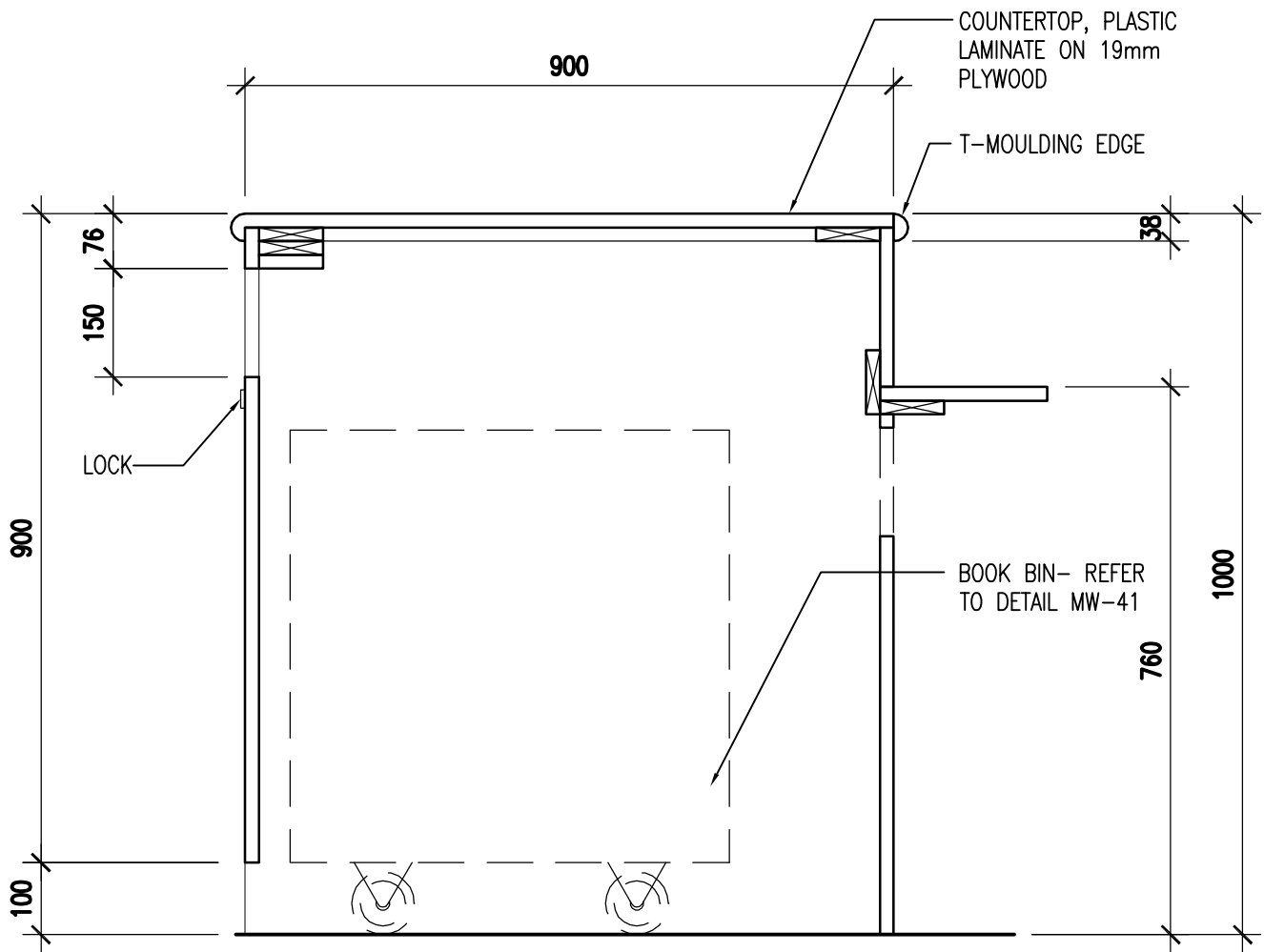
1 ELEVATION
MW-34 1:50

2 SECTION
MW-34 1:10

This drawing plotted

PROJECT	ALBERTA SCHOOLS ALTERNATIVE PROCUREMENT (ASAP II) ALBERTA INFRASTRUCTURE	MW-34
SHEET TITLE	SCIENCE CLASS ROOM - FUME HOOD DETAIL ELEVATION AND SECTION	
PROJECT NUMBER	SCALE	DATE
28344	AS NOTED	JUNE 18 2009

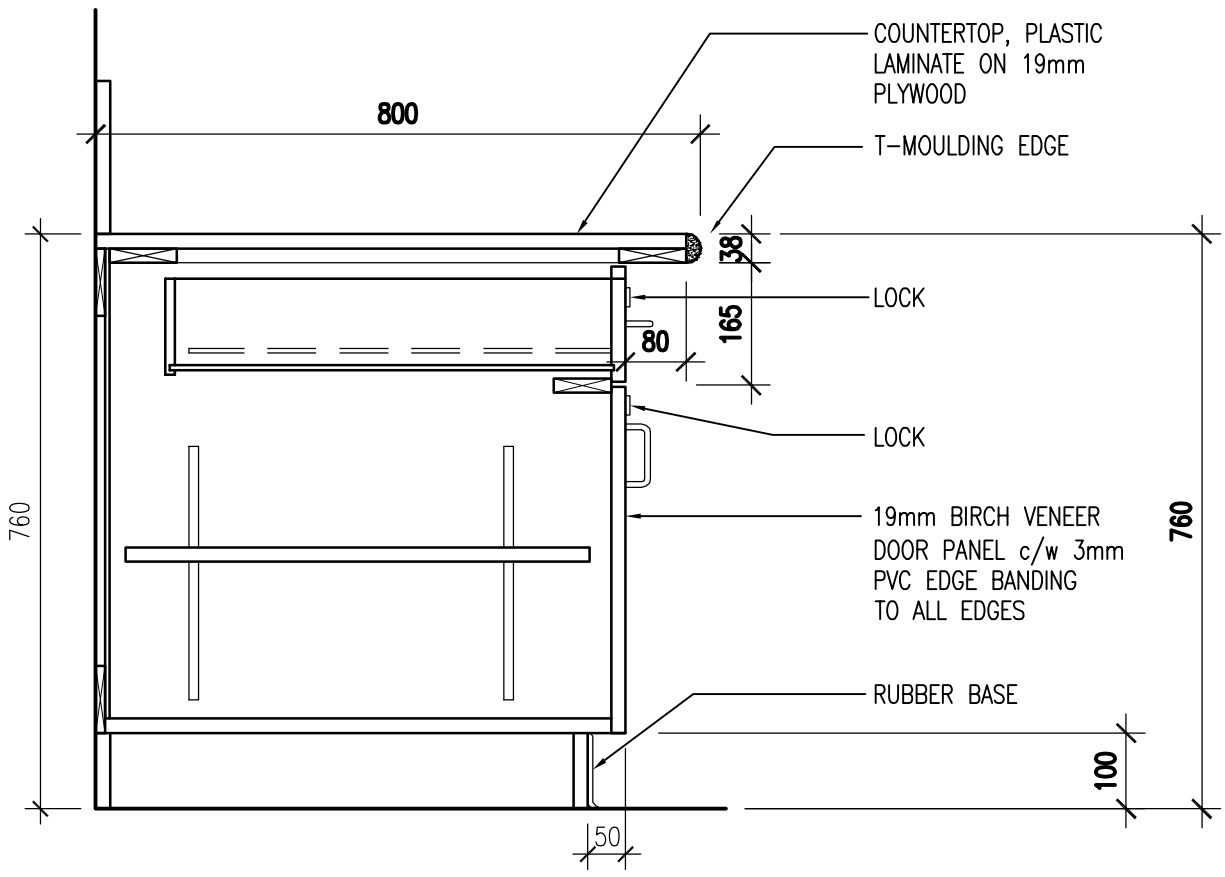
BARR
RYDER
ARCHITECTS
& PLANNERS
210, 10190 - 104 St.
Edmonton, Alberta
Canada T5J 1A7
Tel: (403) 423-8606
Fax: (403) 429-3962



1 LIBRARY DESK BOOK DROP
 MW-35 1:10

This drawing plotted

PROJECT	ALBERTA SCHOOLS ALTERNATIVE PROCUREMENT (ASAP II) ALBERTA INFRASTRUCTURE	MW-35
SHEET TITLE	LIBRARY DESK - BOOK DROP SECTION	BARR RYDER ARCHITECTS & PLANNERS 210, 10190 - 104 St. Edmonton, Alberta Canada T5J 1A7 Tel: (403) 423-6606 Fax: (403) 429-3962
PROJECT NUMBER	SCALE	
28344	AS NOTED	JUNE 18 2009

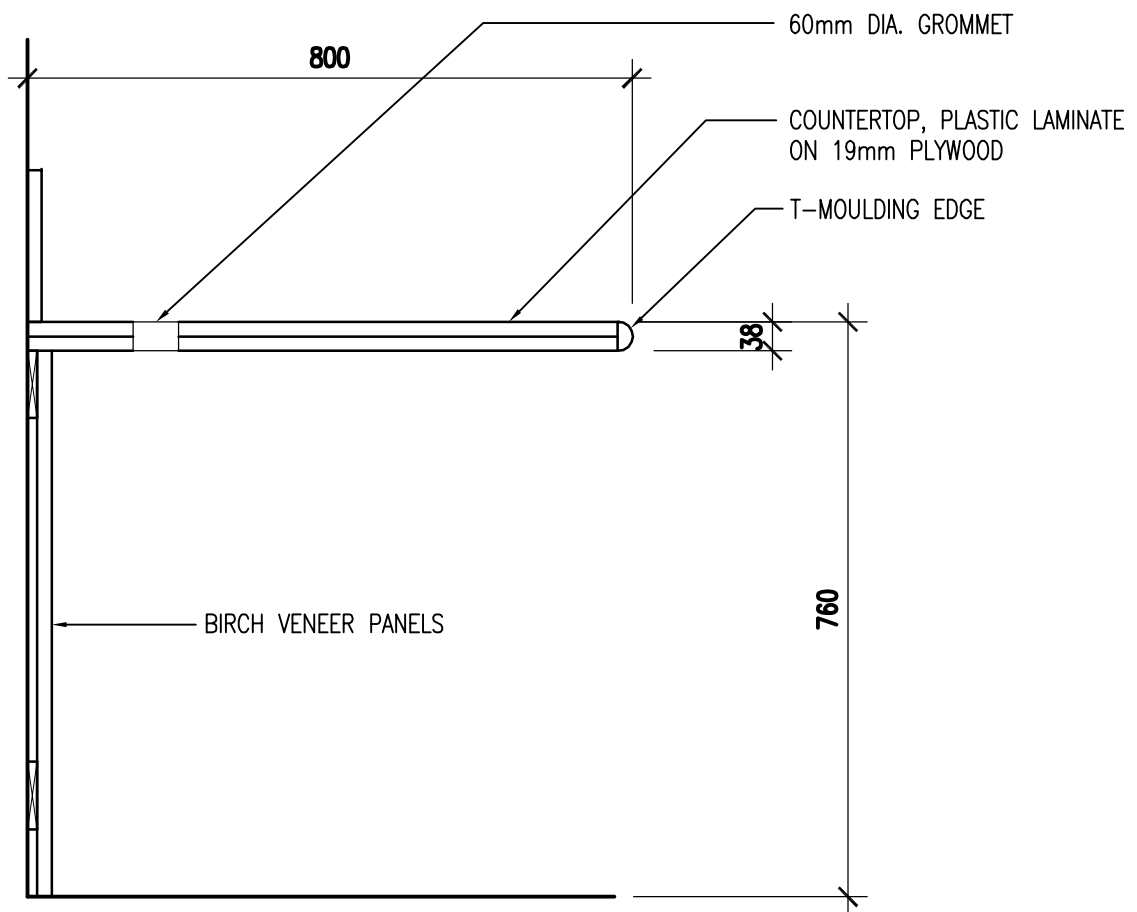


1 LIBRARY DESK CABINET SECTION
 MW-36 1:10

This drawing plotted

PROJECT	ALBERTA SCHOOLS ALTERNATIVE PROCUREMENT (ASAP II) ALBERTA INFRASTRUCTURE	MW-36
SHEET TITLE	LIBRARY DESK - DOOR/DRAWER UNIT	
PROJECT NUMBER	SCALE	DATE
28344	AS NOTED	JUNE 18 2009

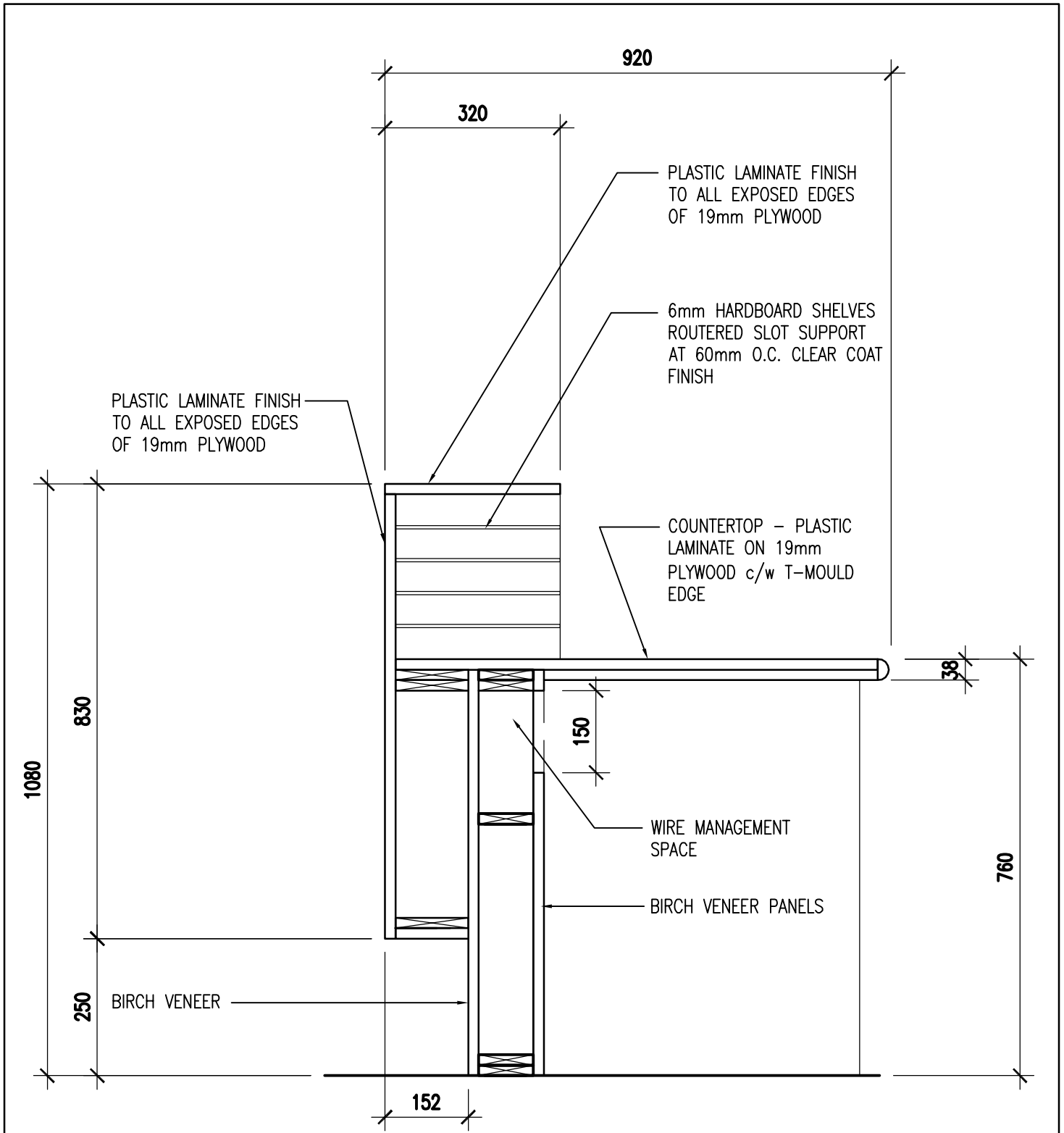
BARR
 RYDER
 ARCHITECTS
 & PLANNERS
210, 10190 - 104 St.
Edmonton, Alberta
Canada T5J 1A7
Tel: (403) 423-8606
Fax: (403) 429-3962



1 LIBRARY DESK OPEN SECTION
 MW-37 1:10

This drawing plotted

PROJECT	ALBERTA SCHOOLS ALTERNATIVE PROCUREMENT (ASAP II) ALBERTA INFRASTRUCTURE	MW-37
SHEET TITLE	LIBRARY DESK - OPEN SECTION	
PROJECT NUMBER	SCALE	BARR RYDER <small>ARCHITECTS & PLANNERS</small> <small>210, 10190 - 104 St. Edmonton, Alberta Canada T5J 1A7 Tel: (403) 423-6606 Fax: (403) 429-3962</small>
28344	AS NOTED	
DATE	JUNE 18 2009	



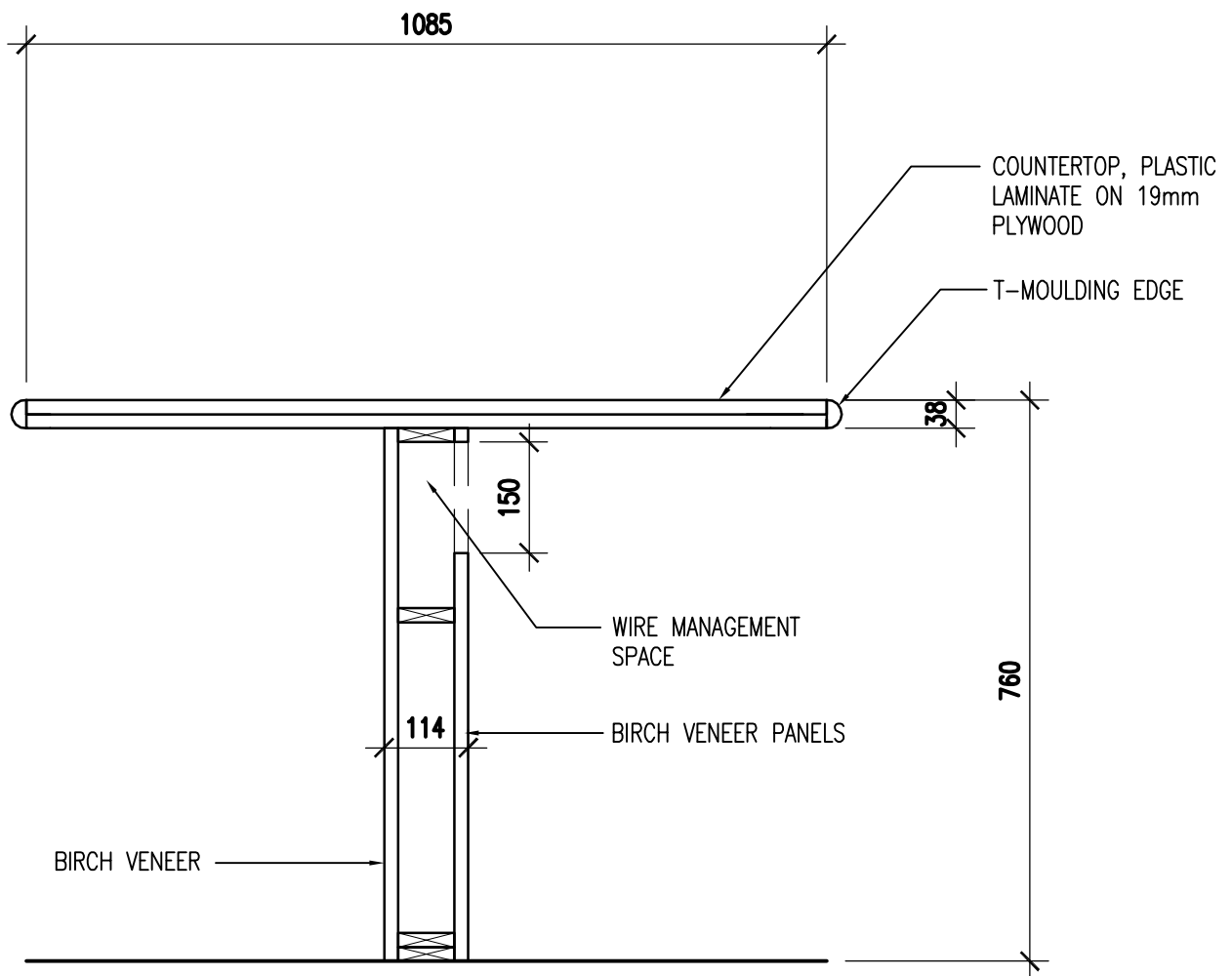
1 LIBRARY DESK OPEN SECTION
 MW-38 1:10

This drawing plotted

PROJECT	ALBERTA SCHOOLS ALTERNATIVE PROCUREMENT (ASAP II) ALBERTA INFRASTRUCTURE	MW-38
SHEET TITLE	LIBRARY DESK - OPEN SECTION	
PROJECT NUMBER	SCALE	DATE
28344	AS NOTED	JUNE 18 2009

BARR
RYDER

ARCHITECTS
& PLANNERS
 210, 10190 - 104 St.
 Edmonton, Alberta
 Canada T5J 1A7
 Tel: (403) 423-8606
 Fax: (403) 429-3962

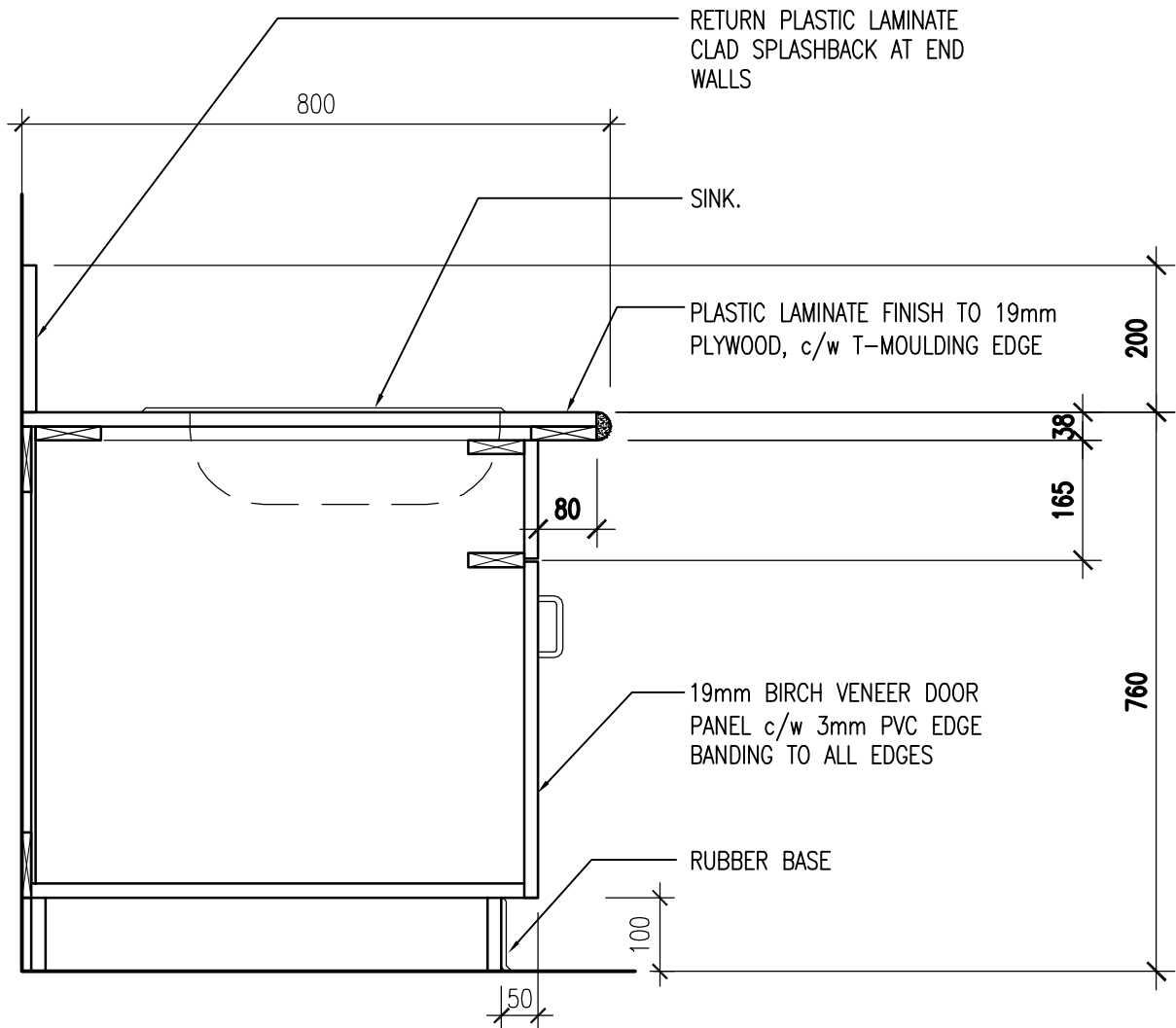


1 LIBRARY DESK BARRIER FREE
 MW-39 1:10

This drawing plotted

PROJECT	ALBERTA SCHOOLS ALTERNATIVE PROCUREMENT (ASAP II) ALBERTA INFRASTRUCTURE	MW-39
SHEET TITLE	LIBRARY DESK - BARRIER FREE SECTION	
PROJECT NUMBER	SCALE	DATE
28344	AS NOTED	JUNE 18 2009

BARR
RYDER
ARCHITECTS & PLANNERS
210, 10190 - 104 St.
Edmonton, Alberta
Canada T5J 1A7
Tel: (403) 423-8606
Fax: (403) 429-3962

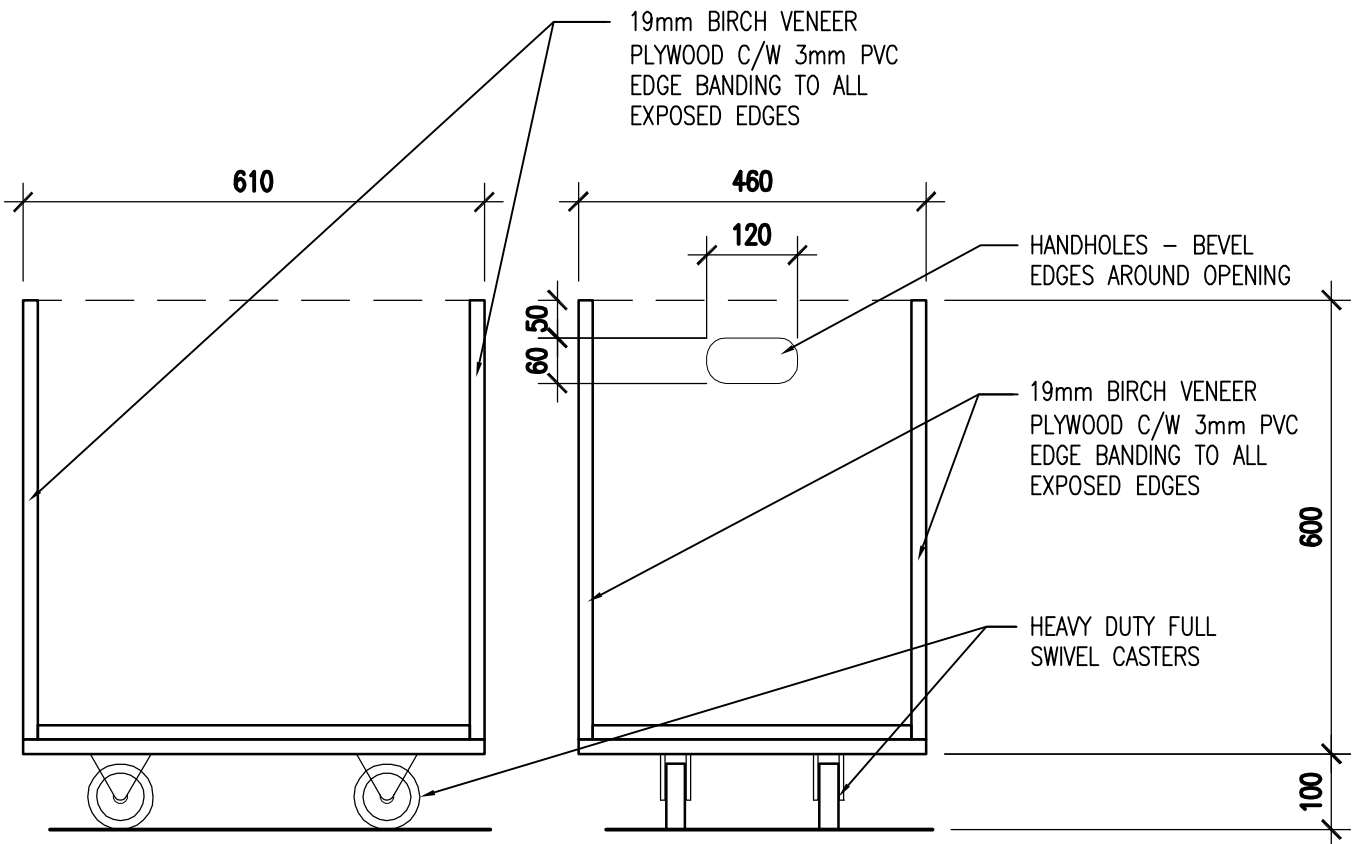


1 LIBRARY DESK SINK CABINET
 MW-40 1:10

This drawing plotted

PROJECT	ALBERTA SCHOOLS ALTERNATIVE PROCUREMENT (ASAP II) ALBERTA INFRASTRUCTURE	MW-40
SHEET TITLE	LIBRARY DESK - SINK CABINET SECTION	
PROJECT NUMBER	SCALE	DATE
28344	AS NOTED	JUNE 18 2009

BARR RYDER
 ARCHITECTS & PLANNERS
210, 10190 - 104 St.
Edmonton, Alberta
Canada T5J 1A7
Tel: (403) 423-8606
Fax: (403) 429-3962

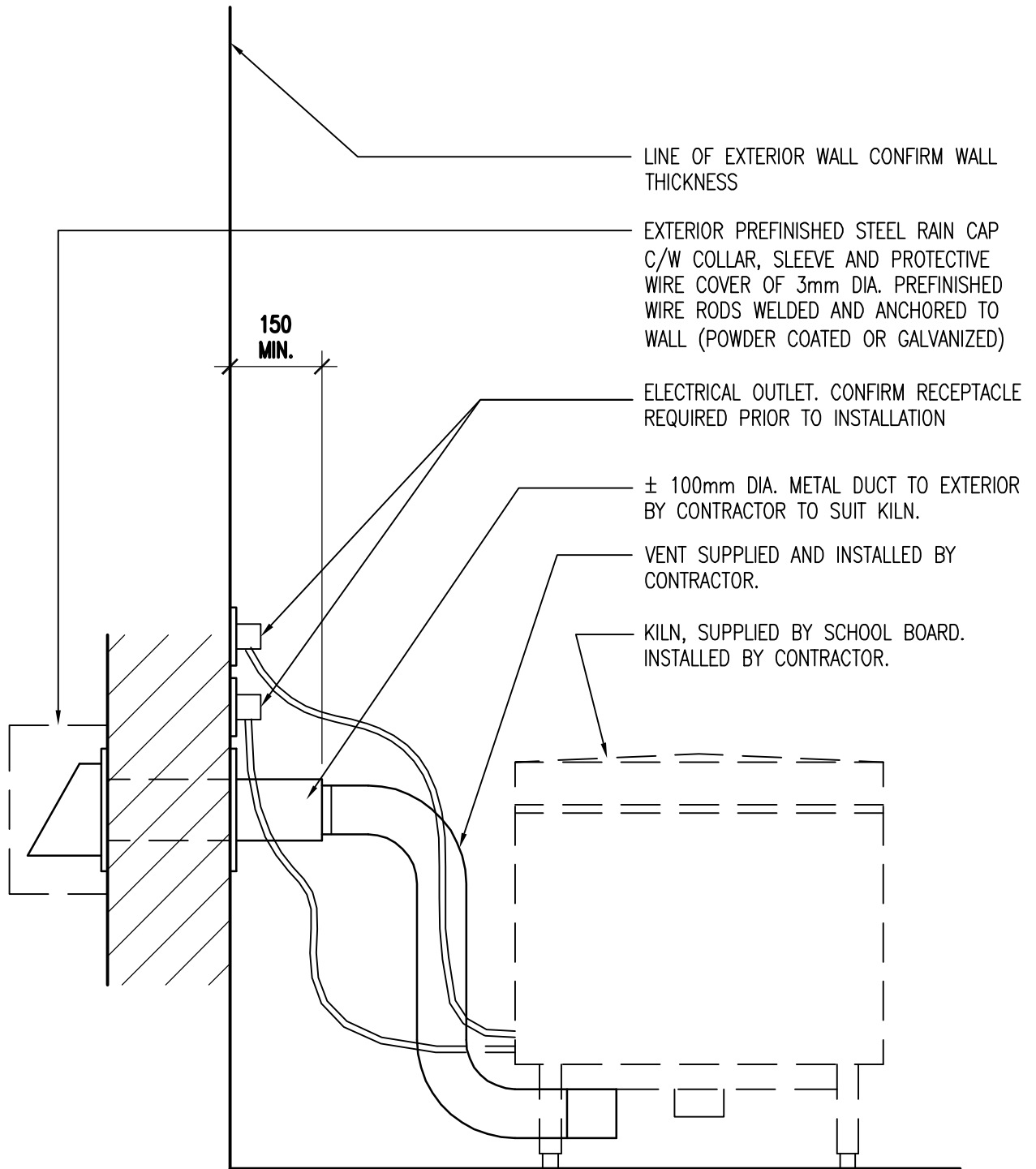


1 LIBRARY DESK BOOK BIN DETAILS
MW-41 1:10

This drawing plotted

PROJECT	ALBERTA SCHOOLS ALTERNATIVE PROCUREMENT (ASAP II) ALBERTA INFRASTRUCTURE	MW-41
SHEET TITLE	LIBRARY DESK - BOOK BIN DETAILS	
PROJECT NUMBER	SCALE	DATE
28344	AS NOTED	JUNE 18 2009

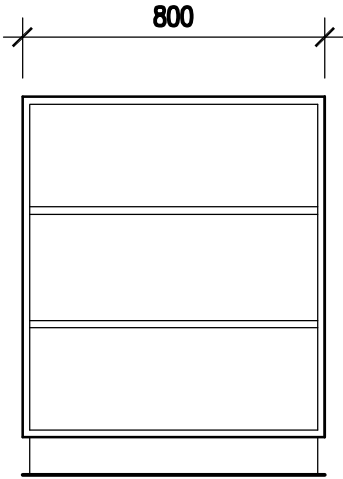
BARR
RYDER
ARCHITECTS
& PLANNERS
210, 10190 - 104 St.
Edmonton, Alberta
Canada T5J 1A7
Tel: (403) 423-8606
Fax: (403) 429-3962



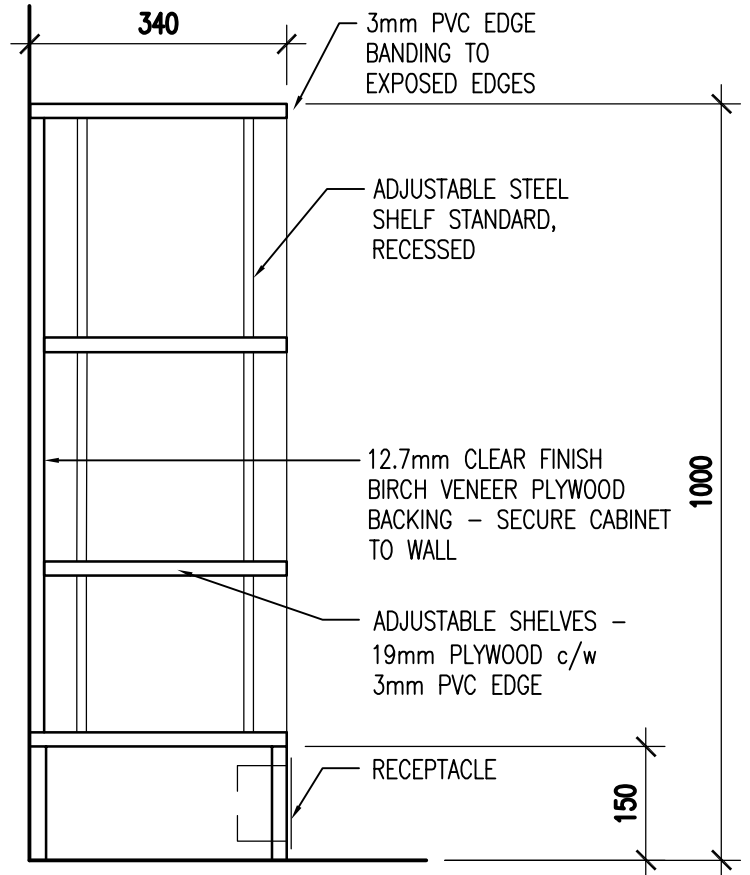
1 KILN INSTALLATION DETAIL
 MW-42 1:10

This drawing plotted

PROJECT	ALBERTA SCHOOLS ALTERNATIVE PROCUREMENT (ASAP II) ALBERTA INFRASTRUCTURE	MW-42
SHEET TITLE	KILN INSTALLATION DETAIL	BARR RYDER <small>ARCHITECTS & PLANNERS</small> <small>210, 10190 - 104 St. Edmonton, Alberta Canada T5J 1A7 Tel: (403) 423-8606 Fax: (403) 429-3962</small>
PROJECT NUMBER	28344	
SCALE	AS NOTED	
DATE	JUNE 18 2009	



1 **ELEVATION**
MW-43 1:20



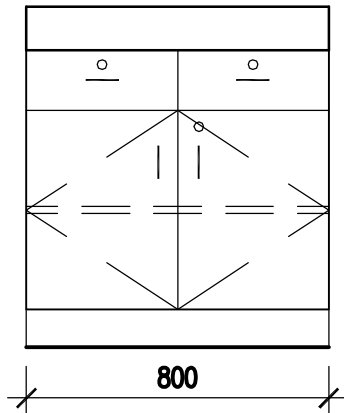
2 **SECTION**
MW-43 1:10

This drawing plotted

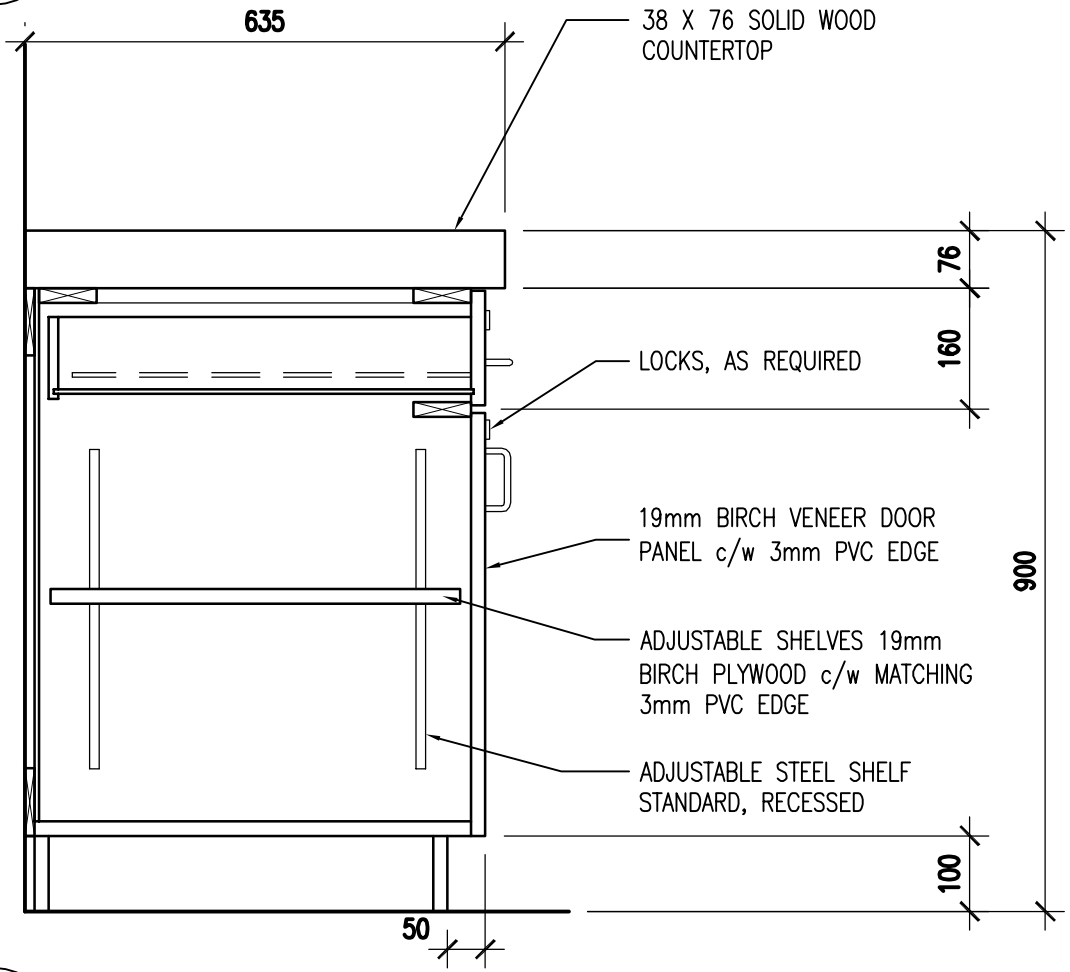
PROJECT	ALBERTA SCHOOLS ALTERNATIVE PROCUREMENT (ASAP II) ALBERTA INFRASTRUCTURE	MW-43
SHEET TITLE	LIBRARY SHELVING - SHORT ELEVATION AND SECTION	
PROJECT NUMBER	SCALE	DATE
28344	AS NOTED	JUNE 18 2009

BARR
RYDER

**ARCHITECTS
& PLANNERS**
 210, 10190 - 104 St.
 Edmonton, Alberta
 Canada T5J 1A7
 Tel: (403) 423-6606
 Fax: (403) 429-3962



1 **ELEVATION**
MW-44 1:20

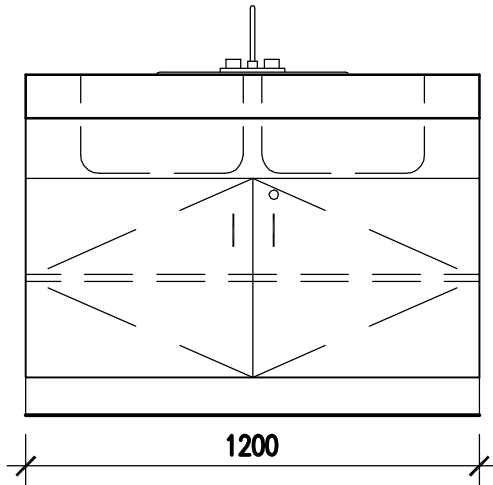


2 **SECTION**
MW-44 1:10

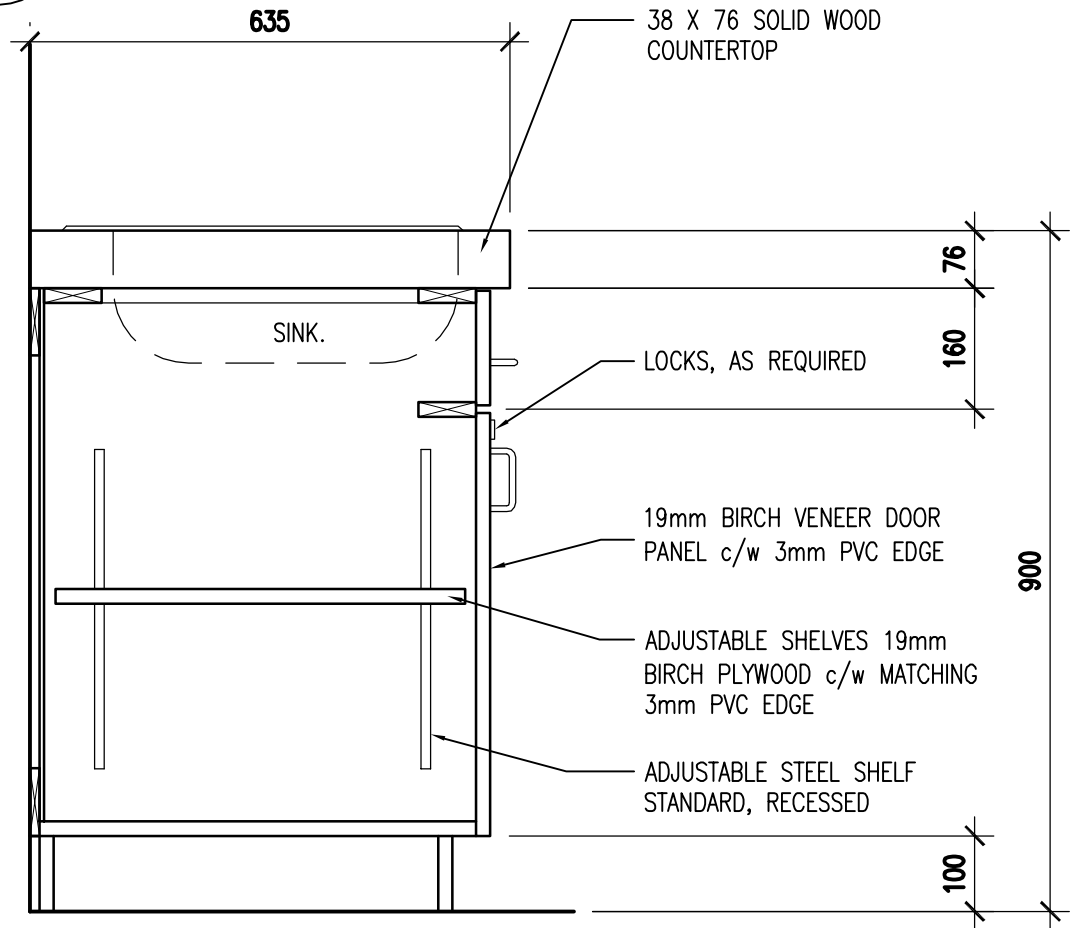
This drawing plotted

PROJECT	ALBERTA SCHOOLS ALTERNATIVE PROCUREMENT (ASAP II) ALBERTA INFRASTRUCTURE	MW-44
SHEET TITLE	CTS CLASSROOM MILLWORK - DOOR/DRAWER UNIT ELEVATION AND SECTION	
PROJECT NUMBER	SCALE	DATE
28344	AS NOTED	JUNE 18 2009

**BARR
RYDER**
ARCHITECTS
& PLANNERS
210, 10190 - 104 St.
Edmonton, Alberta
Canada T5J 1A7
Tel: (403) 423-8606
Fax: (403) 429-3962



1
MW-3 1:20
ELEVATION

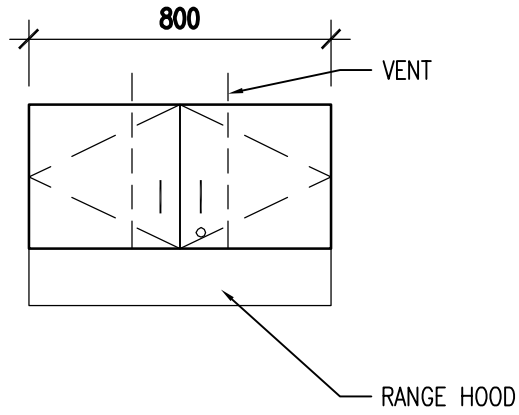


2
MW-1 1:10
SECTION

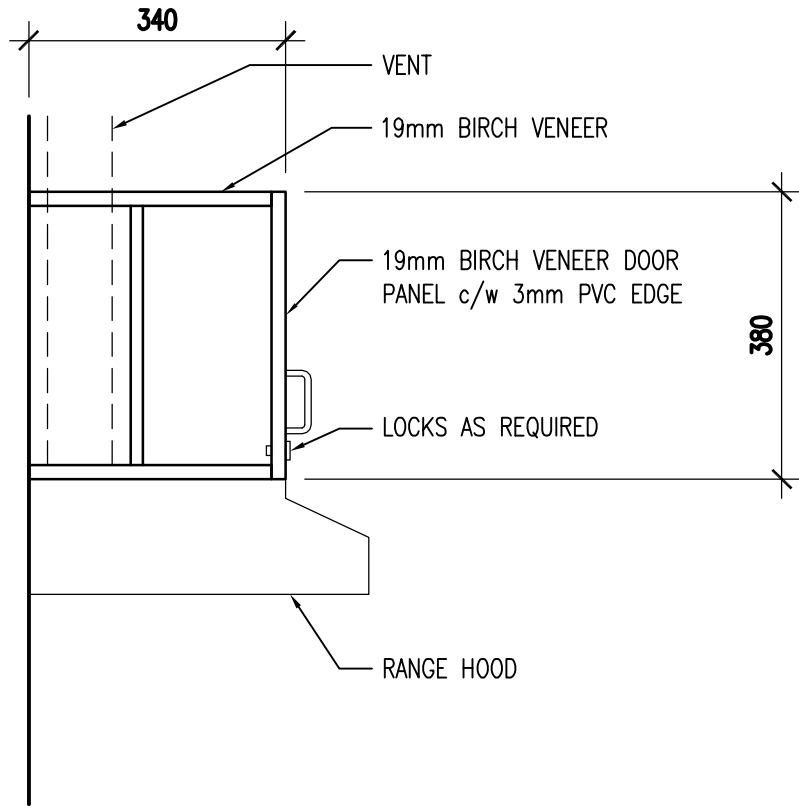
This drawing plotted

PROJECT	ALBERTA SCHOOLS ALTERNATIVE PROCUREMENT (ASAP II) ALBERTA INFRASTRUCTURE	MW-45
SHEET TITLE	CTS CLASSROOM MILLWORK - SINK UNIT ELEVATION AND SECTION	
PROJECT NUMBER	SCALE	DATE
28344	AS NOTED	JUNE 18 2009

**BARR
RYDER**
ARCHITECTS
& PLANNERS
210, 10190 - 104 St.
Edmonton, Alberta
Canada T5J 1A7
Tel: (403) 423-8606
Fax: (403) 429-3962



1 ELEVATION
MW-11 1:20



2 SECTION
MW-11 1:10

This drawing plotted

PROJECT	ALBERTA SCHOOLS ALTERNATIVE PROCUREMENT (ASAP II) ALBERTA INFRASTRUCTURE	MW-46
SHEET TITLE	FOOD AND FASHION / STAFF KITCHEN - RANGE HOOD MILLWORK ELEVATION AND SECTION	
PROJECT NUMBER 28344	SCALE AS NOTED	DATE JULY 20 2009

BARR RYDER ARCHITECTS & PLANNERS
 210, 10190 - 104 St.
 Edmonton, Alberta
 Canada T5J 1A7
 Tel: (403) 423-8606
 Fax: (403) 429-3962